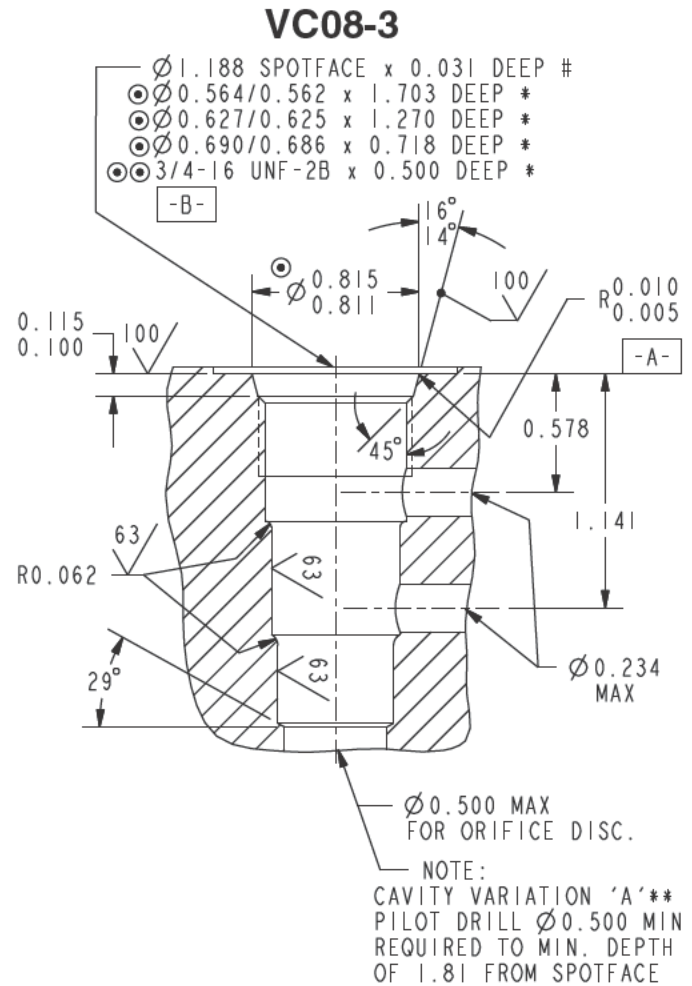
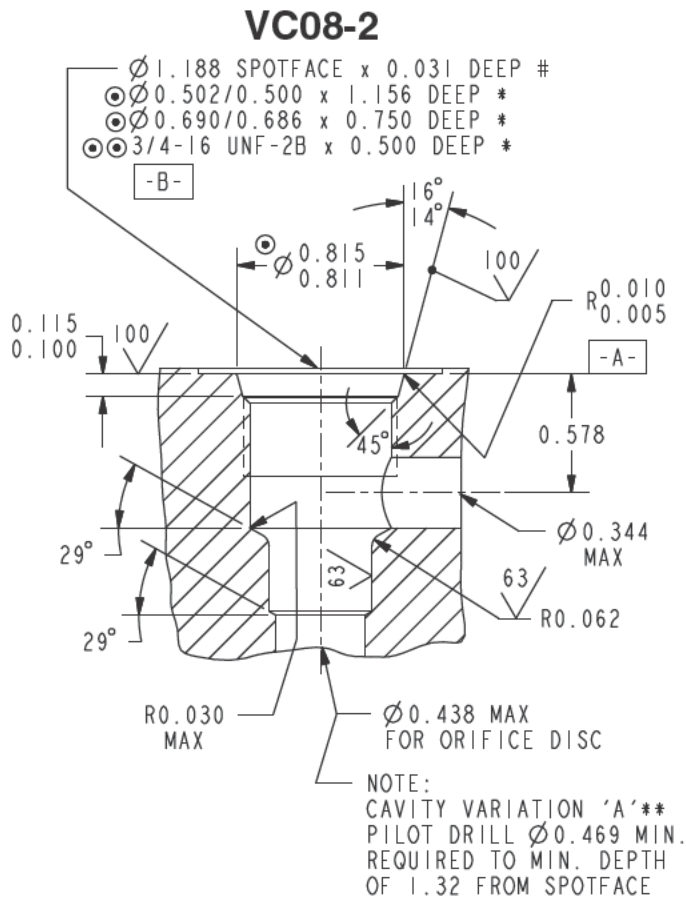


# Series 08 Cartridge Cavities



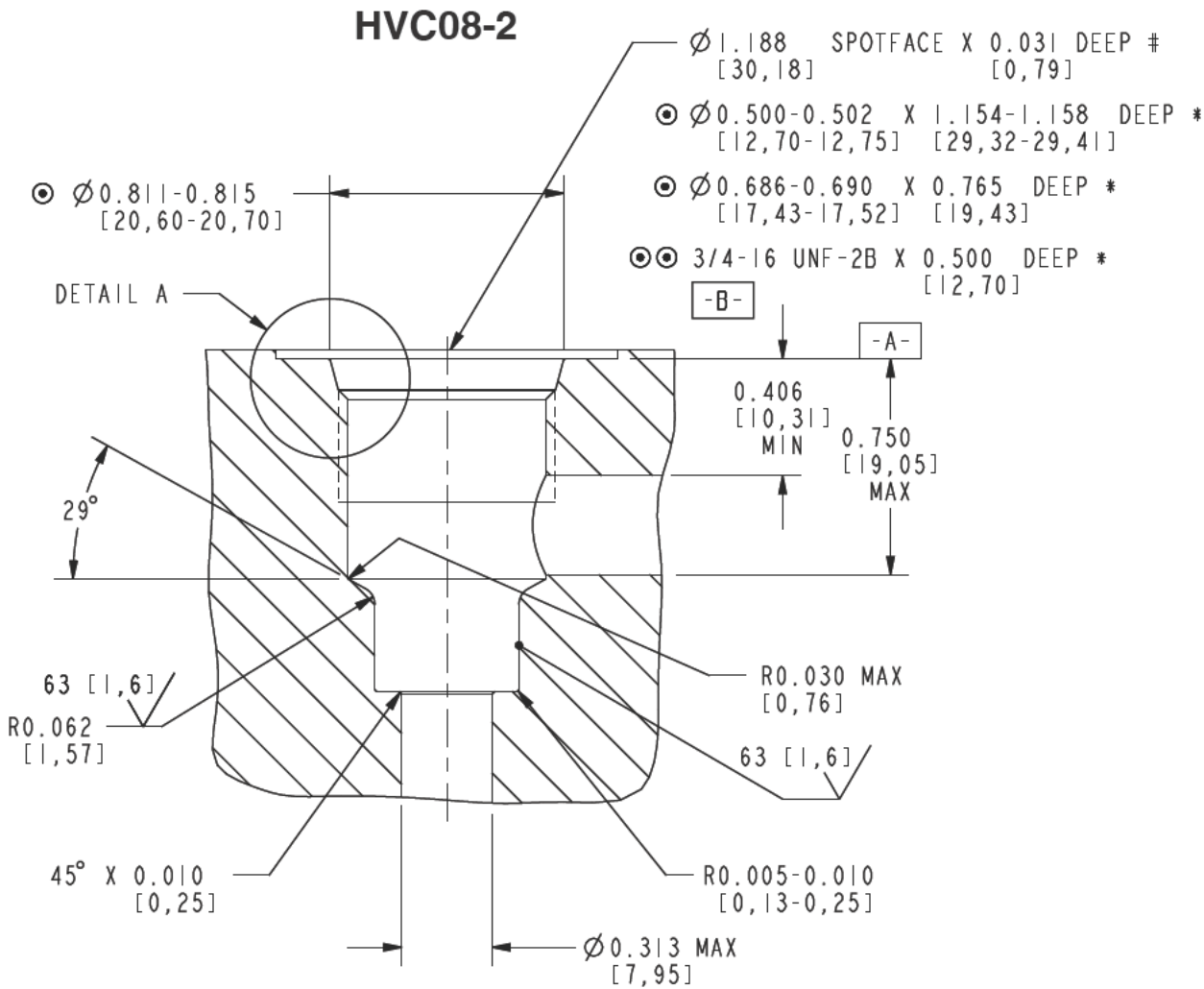
**NOTES:**

- THE ABOVE FEATURES (EXCEPT FOR PILOT DRILL AND CROSS DRILLS) CAN BE MACHINED SIMULTANEOUSLY USING HYDRAFORCE FORM TOOLS. CONSULT FACTORY.

⊙ -		0.001	A	⊙ ⊙ -		0.001	A
		0.002	B			⊙	0.0009

- \* - DEPTHS ARE FROM DATUM **-A-** .
- # - UNLESS OTHERWISE SPECIFIED ON MACHINING DRAWING.
  - UNSPECIFIED TOLERANCES ARE  $\pm 0.005$ .
  - UNSPECIFIED ANGULAR DIMENSIONS  $\pm 3^\circ$ .
- \*\* - FEATURES OF VARIATION 'A' ARE ONLY REQUIRED IF NOTED ON A SPECIFIC PRODUCT CATALOG PAGE.

# Series 08 Cartridge Cavities



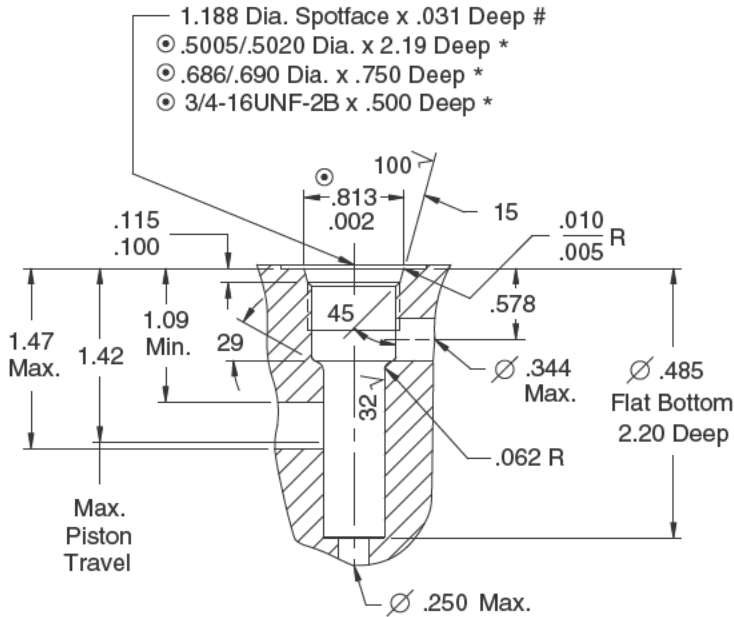
**NOTES:**

$\odot$	$\frac{\text{---}}{\text{---}}$	0.001 [0,025]	A	$\odot\odot$	$\frac{\text{---}}{\text{---}}$	0.001 [0,025]	A
	$\frac{\text{---}}{\text{---}}$	0.002 [0,05]	B		$\frac{\text{---}}{\text{---}}$	0.0009 [0,023]	(PITCH DIA)

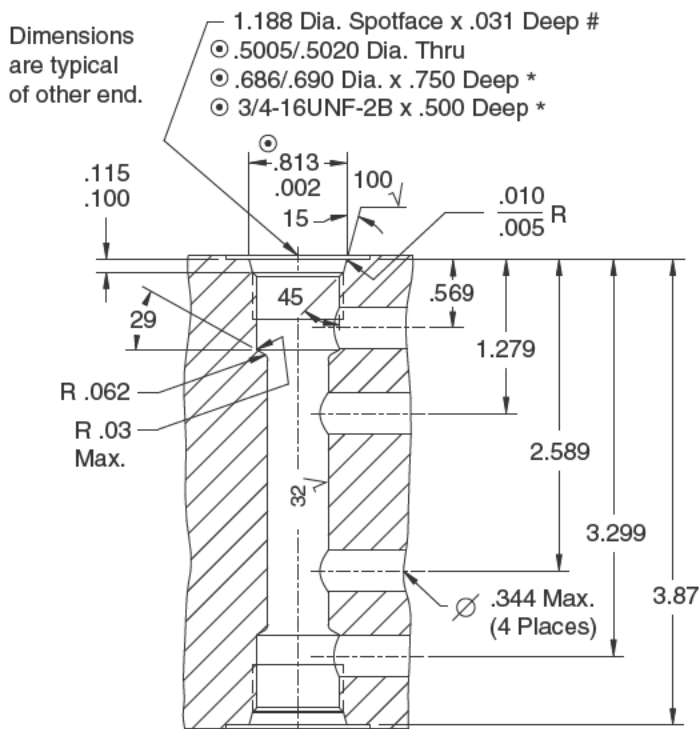
- \* - DEPTHS ARE FROM DATUM **-A-** .
- # - UNLESS OTHERWISE SPECIFIED ON MACHINING DRAWING.
- UNSPECIFIED TOLERANCES ARE  $\pm 0.005$  [0,13].
- UNSPECIFIED ANGULAR DIMENSIONS  $\pm 3^\circ$ .
- SURFACE FINISH SPECIFICATIONS ARE IN MICROINCHES [MICROMETERS].

# Series 08 Cartridge Cavities

## VC08-PCV



## VC08-DCV



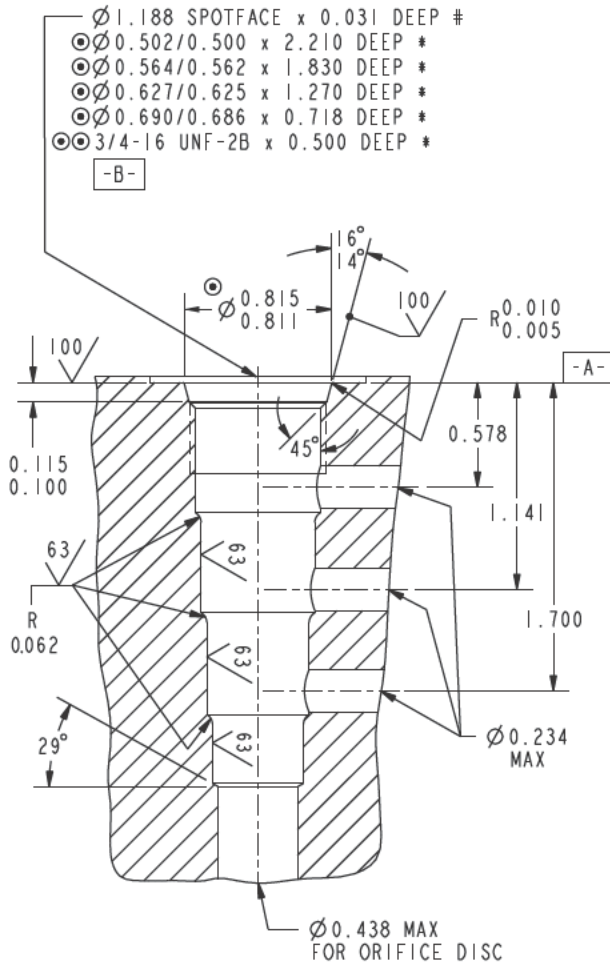
Notes:

- ◎ 1. These Diameters to be Concentric within .002 T.I.R. and Perpendicular to Spotface within .001 T.I.R.
- \* 2. Depths are from Spotface.
- 3. Unspecified Tolerances are .005.
- # 4. Unless Otherwise Specified on Machining Drawing
- 5. All Dimensions shown in inches unless otherwise noted.

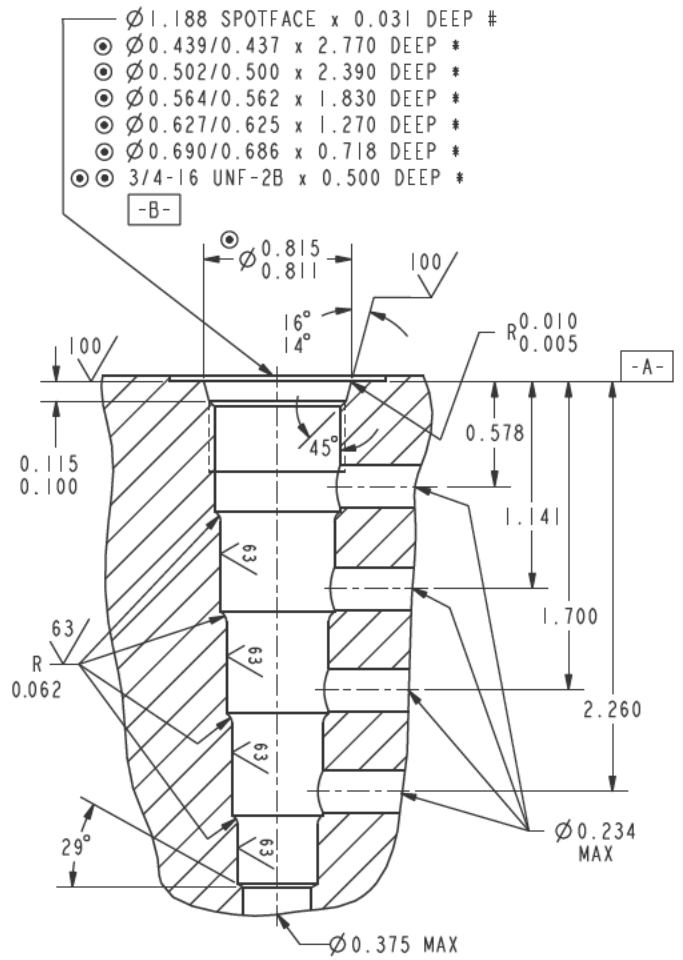
Cavity features (except for pilot drill and cross drills) can be machined simultaneously using HydraForce form tools. Consult factory.

# Series 08 Cartridge Cavities

### VC08-4



### VC08-5



#### NOTES:

- THE ABOVE FEATURES (EXCEPT FOR PILOT DRILL AND CROSS DRILLS) CAN BE MACHINED SIMULTANEOUSLY USING HYDRAFORCE FORM TOOLS. CONSULT FACTORY.

$\odot$ -	<table border="1" style="display: inline-table; vertical-align: middle;"><tr><td style="width: 10px; height: 10px;"></td><td style="width: 10px; height: 10px;"></td><td style="width: 10px; height: 10px;"></td><td style="width: 10px; height: 10px;"></td><td style="width: 10px; height: 10px;"></td></tr><tr><td></td><td>0.001</td><td>A</td><td></td><td></td></tr><tr><td><math>\nearrow</math></td><td>0.002</td><td>B</td><td></td><td></td></tr></table>							0.001	A			$\nearrow$	0.002	B			$\odot \odot$ -	<table border="1" style="display: inline-table; vertical-align: middle;"><tr><td style="width: 10px; height: 10px;"></td><td style="width: 10px; height: 10px;"></td><td style="width: 10px; height: 10px;"></td><td style="width: 10px; height: 10px;"></td><td style="width: 10px; height: 10px;"></td></tr><tr><td></td><td>0.001</td><td>A</td><td></td><td></td></tr><tr><td><math>\bigcirc</math></td><td>0.0009</td><td>(PITCH DIA)</td><td></td><td></td></tr></table>							0.001	A			$\bigcirc$	0.0009	(PITCH DIA)		
	0.001	A																															
$\nearrow$	0.002	B																															
	0.001	A																															
$\bigcirc$	0.0009	(PITCH DIA)																															

- \* - DEPTHS ARE FROM DATUM -A-.
- # - UNLESS OTHERWISE SPECIFIED ON MACHINING DRAWING.
- UNSPECIFIED TOLERANCES ARE  $\pm 0.005$ .
- UNSPECIFIED ANGULAR DIMENSIONS  $\pm 3^\circ$ .