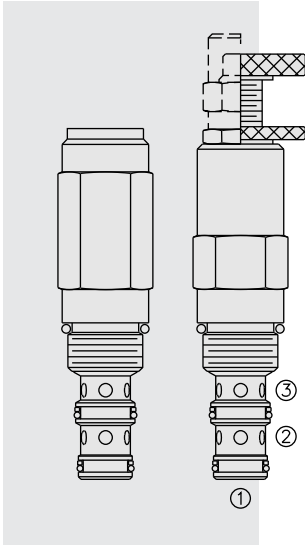


PRESSURE CONTROLS

PS10-36 Pilot-Operated Sequence, Internal Pilot,



DESCRIPTION

A screw-in, cartridge-style, pilot-operated, spool-type, hydraulic sequence valve with internal pilot and external spring chamber drain.

OPERATION

In its steady state, the **PS10-36** blocks flow from ① to ②, with the spring chamber drained at ③.

On attainment of a predetermined pressure at ①, the cartridge shifts to open ① to ②. Note that back-pressure on ③ adds to the spring setting value.

FEATURES

- Adjustments cannot be backed out of the valve.
- Adjustments prohibit springs from going solid.
- Optional spring ranges to 207 bar (3000 psi).
- Hardened spool and cage for long life.
- Industry common cavity.

RATINGS

Operating Pressure: to 240 bar (3500 psi)

Sequence Pressure Max.: to 207 bar (3000 psi)

Flow: See Performance Chart

Internal Leakage: 82 cc/minute (5 cu. in./minute) max. to 85% of nominal setting

Pilot Orifice: Pilot-operated through 0.51 mm (0.02 inch) hole

Crack Pressure Defined: bar (psi) evident at 0.95 lpm (0.25 gpm) attained ① to ②

Standard Spring Ranges:

5.5 to 27.6 bar (80 to 400 psi)

10.3 to 103.4 bar (150 to 1500 psi)

24.1 to 206.9 bar (350 to 3000 psi)

Temperature: -40 to 120°C with standard Buna seals

Filtration: See page 9.010.1

Fluids: Mineral-based or synthetics with lubricating properties at viscosities of 7.4 to 420 cSt (50 to 2000 sus); See Temperature and Oil Viscosity, page 9.060.1

Installation: No restrictions; See page 9.020.1

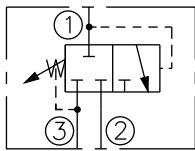
Cavity: VC10-3; See page 9.110.1

Cavity Tool: CT10-3XX; See page 8.600.1

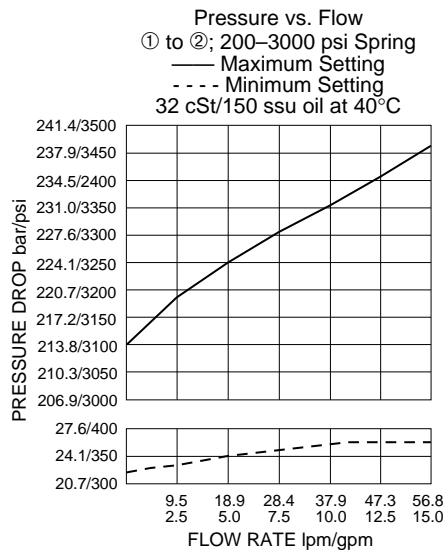
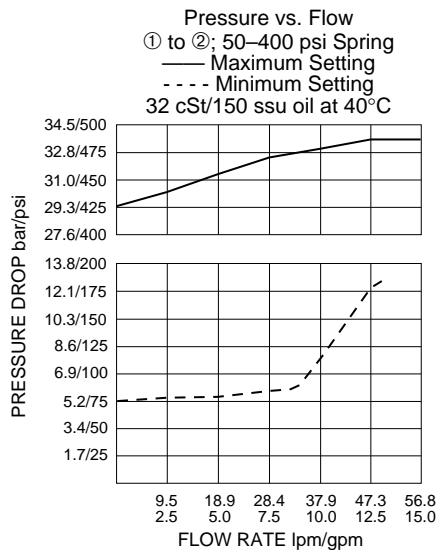
Seal Kit: SK10-3X-BM; See page 8.650.1

SYMBOLS

USASI/ISO:



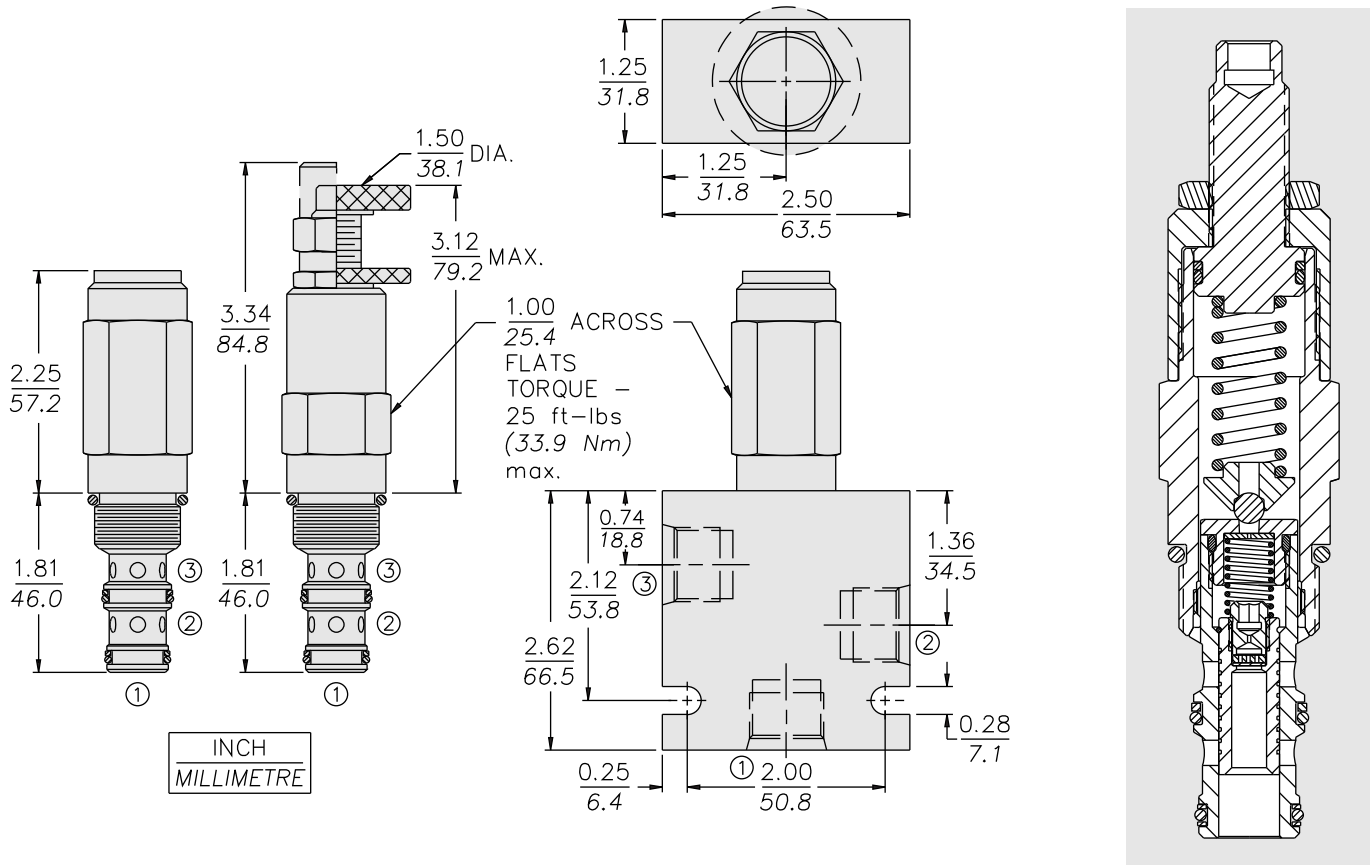
PERFORMANCE (Cartridge Only)



External Drain

PS10-36

DIMENSIONS

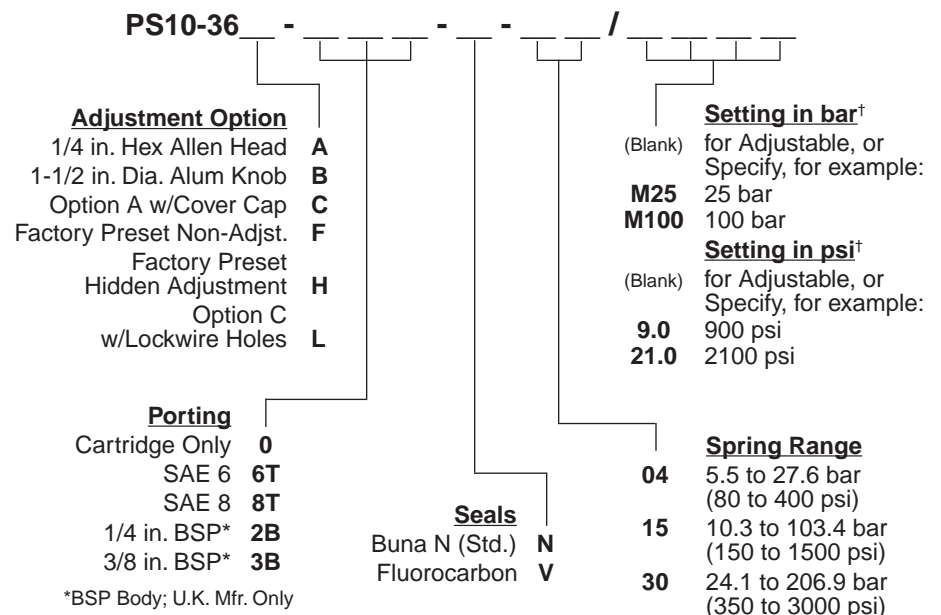


MATERIALS

Cartridge: Weight: 0.27 kg. (0.60 lbs.)
Steel with hardened work surfaces.
Zinc-plated exposed surfaces.
Buna N O-rings and polyester elastomer back-ups standard.
Anodized aluminum knobs and caps.

Standard Ported Body: Weight: 0.36 kg. (0.80 lbs.); Anodized high-strength 6061 T6 aluminum alloy, rated to 207 bar (3000 psi)
Ductile iron bodies available; dimensions may differ.
See page 8.010.1.

TO ORDER



[†]Adjustable valves will be preset to approx. 50% of spring max. potential.