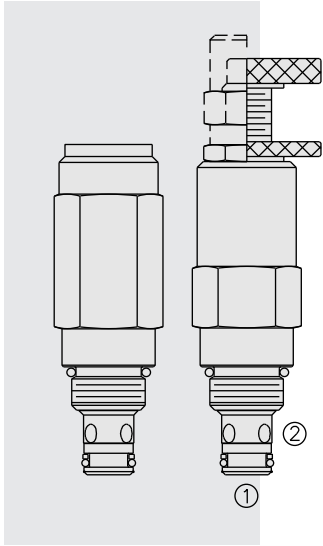
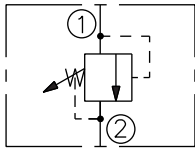


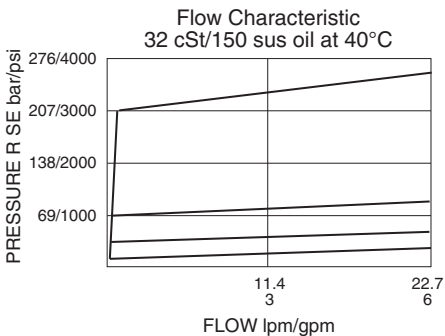
RV08-20 Relief, Direct-Acting Poppet



ISO SYMBOL



PERFORMANCE (Cartridge Only)



DESCRIPTION

A screw-in, cartridge-style, direct-acting, poppet-type, hydraulic relief valve intended for lower flow circuits requiring low internal leakage.

OPERATION

The RV08-20 blocks flow from 1 to 2 until sufficient pressure is present at 1 to force the spring-opposed poppet from its seat.

Note: The RV08-20 may be used in cross-over relief applications (back pressure on 2) with the use of the "C" double back-up ring seal option. See Ordering Table.

FEATURES

- Adjustments cannot be backed out of the valve.
- Adjustment options A, B, and C: positive stops prevent springs from going solid.
- Optional salt spray protection to meet 1000-hour specification (Prefix G).
- Optional spring ranges to 275.8 bar (4000 psi).
- Rapid response to pressure changes.
- Compact size.

RATINGS

Operating Pressure: 275.8 bar (4000 psi)

Proof Pressure: 482.6 bar (7000 psi)

Burst Pressure: 896.3 bar (13000 psi)

Flow: 22.7 lpm (6 gpm) at maximum pressure

Relief Pressure Setting Defined: Bar (psi) evident at 0.95 lpm (0.25 gpm)

Internal Leakage: 0.25 cc/minute (5 drops/minute) max. to 75% of nominal setting

Reseat Pressure: Nominal 80% of crack pressure

Temperature: -40 to 100°C (-40 to 212°F) with standard Buna seals;

-26 to 204°C (-15 to 400°F) with fluorocarbon seals;

-54 to 107°C (-65 to 225°F) with polyurethane seals

Filtration: See page 9.010.1

Fluids: Mineral-based or synthetics with lubricating properties at viscosities of 7.4 to 420 cSt (50 to 2000 sus); See Temperature and Oil Viscosity, page 9.060.1

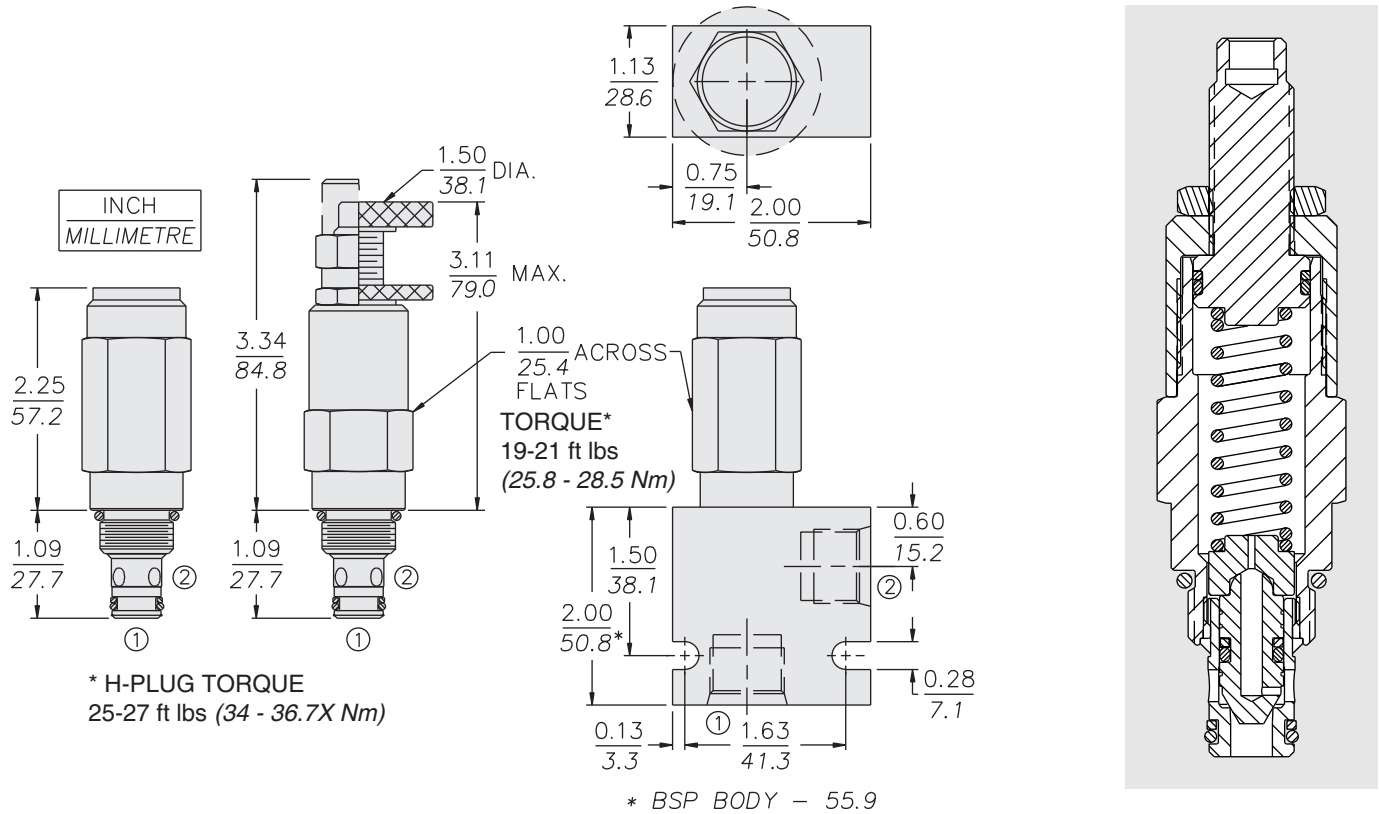
Installation: No restrictions; See page 9.020.1

Cavity: VC08-2; See page 9.108.1

Cavity Tool: CT08-2XX; See page 8.600.1

Seal Kit: SK08-2X-B; SK08-2X-M (for cross-over relief application); See page 8.650.1

DIMENSIONS



* H-PLUG TORQUE
25-27 ft lbs (34 - 36.7X Nm)

MATERIALS

Cartridge: Weight: 0.16 kg. (0.35 lb.) to 0.22 kg. (0.47 lb.) depending on adjustment option. Steel with hardened work surfaces. Zinc-plated exposed surfaces. Buna N O-rings and back-up standard. Anodized aluminum knobs and caps.

Standard Ported Body: Weight: 0.16 kg. (0.35 lbs.); Anodized high-strength aluminum alloy, rated to 207 bar (3000 psi). Ductile iron bodies available; dimensions may differ. See page 8.008.1

TO ORDER

