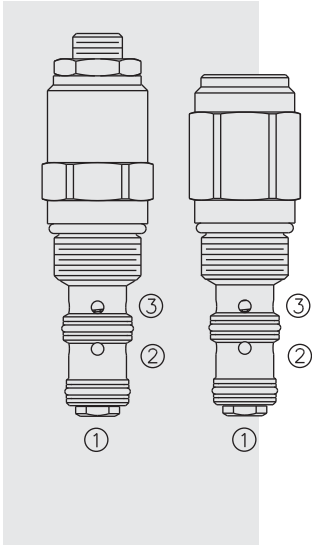


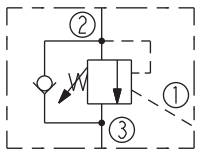
PRESSURE CONTROLS

CB10-30 Motion Control Valve

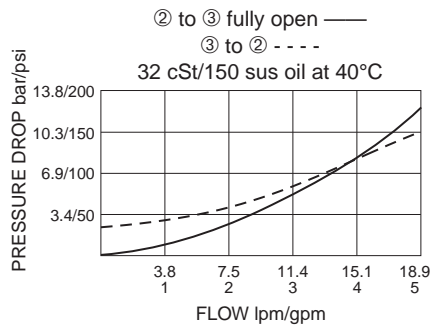


SYMBOLS

USASI/ISO:



PERFORMANCE (Cartridge Only)



DESCRIPTION

A low leakage, pilot-operated motion control valve designed to regulate the lowering of over-running loads, while providing free reverse flow and thermal relief protection at the actuator..

OPERATION

The **CB10-30** is a low leakage, poppet-style control valve designed to restrict flow from port ② to port ③ in relation to the pilot signal supplied at port ①. The valve includes free flow reverse flow and thermal relief protection at port ②. For maximum safety, motion control valves are designed to be screwed into an actuator or actuator mounted housing; or according to user specifications they can be incorporated into other manifold configurations.

FEATURES

- Adjustments cannot be backed out of the valve.
- Adjustments prohibit springs from going solid.
- Optional spring ranges to 207 bar (3000 psi).
- Hardened spool and cage for long life.
- Industry common cavity.

RATINGS

Operating Pressure: up to 207 bar (3000 psi)

Flow: up to 19 lpm (5 gpm); see performance chart

Internal Leakage: 10 drops per minute up to 85% of pressure setting

Pressure Setting Defined: Pressure evident at 15 to 25 drops per minute

Pilot Ratio: 7 to 1

Standard Spring Ranges:

Code 22: 17 to 152 bar (250 to 2200 psi)

Code 25: 0 to 172 bar (0 to 2500 psi): F option only

Code 30: 55 to 207 bar (800 to 3000 psi)

Temperature: -40 to 120°C with standard Buna N seals

-35 to 204°C with Fluorocarbon seals

-54 to 107°C with Polyurethane seals

Filtration: See page 9.010.1

Fluids: Mineral-based or synthetics with lubricating properties at viscosities of

7.4 to 420 cSt (50 to 2000 sus); See Temperature and Oil Viscosity, page 9.060.1

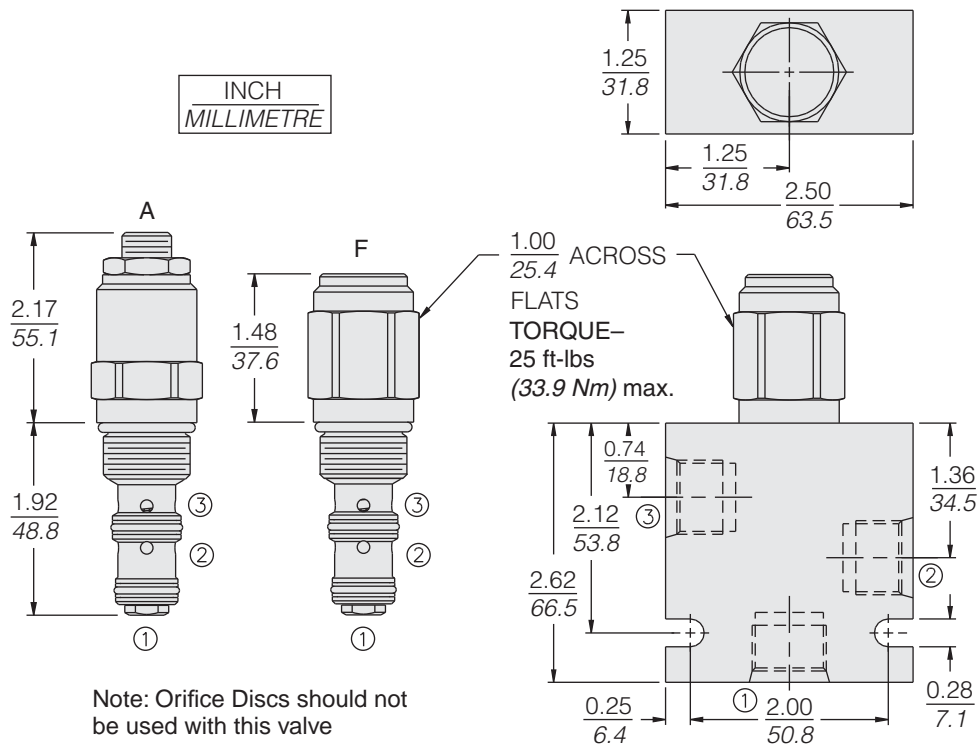
Installation: No restrictions; See page 9.020.1

Cavity: VC10-3, Variation A; See page 9.110.1

Cavity Tool: CT10-3XX; See page 8.600.1

Seal Kit: SK10-3X-MM; See page 8.650.1

DIMENSIONS



MATERIALS

Cartridge: Weight: 0.21 kg. (0.47 lbs.)
Steel with hardened work surfaces.
Zinc-plated exposed surfaces.
Buna N O-rings and polyester elastomer back-ups standard.

Standard Ported Body: Weight: 0.36 kg. (0.80 lbs.); Anodized high-strength 6061 T6 aluminum alloy, rated to 240 bar (3500 psi). Ductile iron bodies available; dimensions may differ. See page 8.010.1.

TO ORDER

CB10-30 - - - /

Adjustment Option
*1/4 in. Hex Allen Head **A**
Factory Preset
Non-Adjustable **F**

*See page 6.003.1 for 'A-Alt' Fixed Height Adjuster details.

Porting
Cartridge Only **0**
SAE 6 **6T**
SAE 8 **8T**
1/4 in. BSP* **2B**
3/8 in. BSP* **3B**

*BSP Body; U.K. Mfr Only

Seals
Buna N (Std.) **N**
Fluorocarbon **V**
Polyurethane **P**

Setting in bar[†]
(Blank) for Adjustable, or Specify, for example:
M25 25 bar
M100 100 bar

Setting in psi[†]
(Blank) for Adjustable, or Specify, for example:
9.0 900 psi
21.0 2100 psi

[†]Adjustable valves will be preset to approx. 50% of spring max. potential.

Spring Range
22 17 to 152 bar (250 to 2200 psi)
25 0 to 172 bar (0 to 2500 psi)
30 155 to 207 bar (800 to 3000 psi)

Spring Range **25** requires Adjustment option **F**.