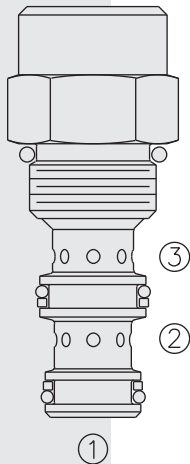


EC08-32 Pressure-Compensator w/Load Sense



DESCRIPTION

A screw-in, cartridge-style, load sense, flow-on-demand pressure-compensator.

OPERATION

With inlet flow at ②, the **EC08-32** will deliver required flow at ③ in response to load differential pressure sensed at ①.

FEATURES

- Hardened parts for long life.
- Quiet, modulated response.
- Industry common cavity.

RATINGS

Operating Pressure: 241 bar (3500 psi)

Proof Pressure: 345 bar (5000 psi)

Burst Pressure: 1034 bar (15000 psi)

Flow Rate: 11.4 lpm (3.0 gpm) with 5.5 bar (80 psi) compensating spring;

18.9 lpm (5.0 gpm) with 10.3 bar (150 psi) compensating spring

30.3 lpm (8.0 gpm) with 17.2 bar (250 psi) compensating spring

Temperature: -40 to 120°C

Filtration: See page 9.010.1

Fluids: Mineral-based or synthetics with lubricating properties at viscosities of 7.4 to 420 cSt (50 to 2000 sus); See Temperature and Oil Viscosity, page 9.060.1

Installation: No restrictions; See page 9.020.1

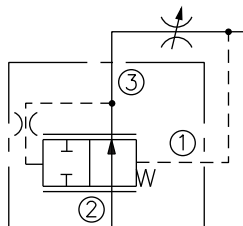
Cavity: VC08-3; See page 9.108.1

Cavity Tool: CT08-3XX; See page 8.600.1

Seal Kit: SK08-3X-M; See page 8.650.1

SYMBOL

USASI/ISO:



PERFORMANCE (Cartridge Only)

