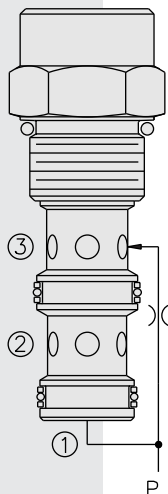


EC12-30 Pressure Compensator



DESCRIPTION

A screw-in, cartridge-style pressure-compensating element, intended for use with a remote fixed or variable orifice to yield a two-port-type, pressure-compensated, flow-regulating hydraulic valve.

OPERATION

The **EC12-30** maintains a constant flow rate from ② regardless of load pressure changes in the circuit downstream of ②.

The cartridge maintains a constant differential pressure from circuit point P to port ① (see USASI Symbol), thereby regulating the hydraulic flow rate between the two points in the circuit.

FEATURES

- Hardened parts for long life.
- Quiet, modulated response.
- Industry common cavity.

RATINGS

Operating Pressure: 240 bar (3500 psi)

Regulated Flow Rate: 58 lpm (15 gpm) max.

Standard Compensator Bias Spring: 6.9 bar (100 psi) See note on Ordering Table.

Flow Maintenance: $\pm 10\%$ from 0.38 to 58 lpm (0.1 to 15 gpm) at pressures from 5.5 to 207 bar (80 to 3000 psi)

Temperature: -40 to 120°C

Filtration: See page 9.010.1

Fluids: Mineral-based or synthetics with lubricating properties at viscosities of 7.4 to 420 cSt (50 to 2000 sus); See Temperature and Oil Viscosity, page 9.060.1

Installation: No restrictions; See page 9.020.1

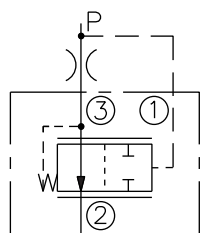
Cavity: VC12-3; See page 9.112.1

Cavity Tool: CT12-3XX; See page 8.600.1

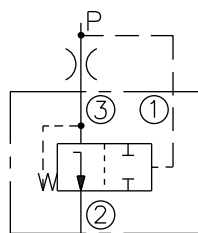
Seal Kit: SK12-3X-MM; See page 8.650.1

SYMBOLS

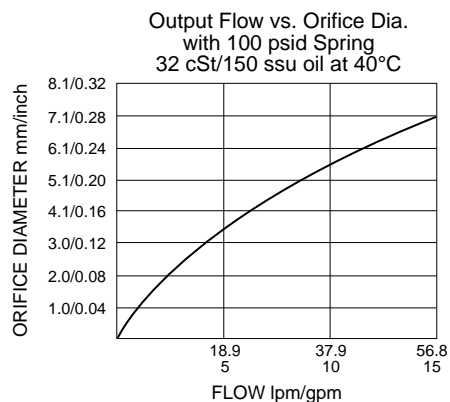
USASI:



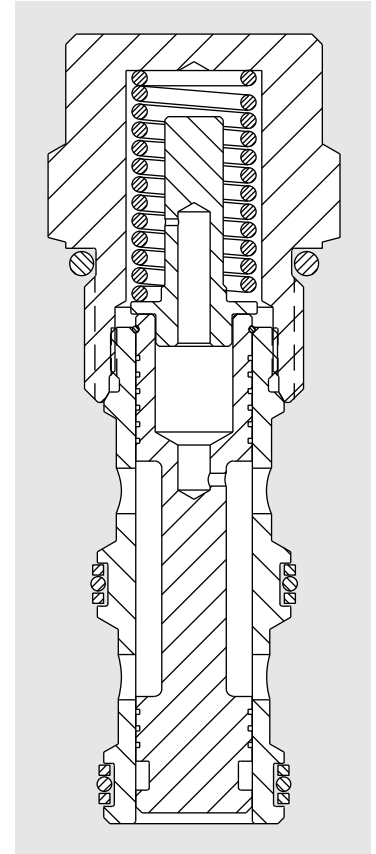
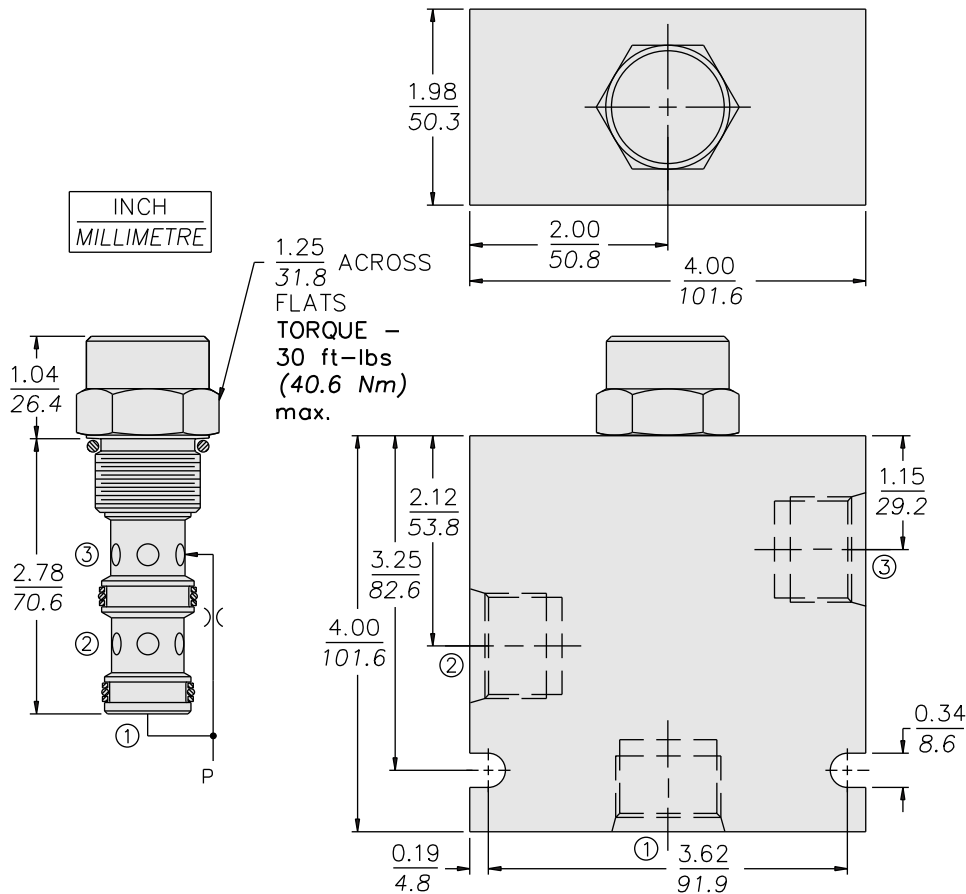
ISO:



PERFORMANCE (Cartridge Only)



DIMENSIONS



MATERIALS

Cartridge: Weight: 0.23 kg. (0.50 lbs.)
Steel with hardened work surfaces.
Zinc-plated exposed surfaces.
Buna N O-rings and polyester elastomer back-ups standard.

Standard Ported Body: Weight:
1.13 kg. (2.5 lbs.) Anodized high-strength 6061 T6 aluminum alloy, rated to 207 bar (3000 psi). Ductile iron bodies available; dimensions may differ. See page 8.012.1

TO ORDER

EC12-30 -

Porting
Cartridge Only **0**
SAE 8 **8T**
SAE 10 **10T**
SAE 12 **12T**
1/2 in. BSP* **4B**
3/4 in. BSP* **6B**

*BSP Body; U.K. Mfr. Only

Compensator Spring

100 6.9 bar (100 psid) standard
160 11.0 bar (160 psid)

Seals

N Buna N (Std.)
V Fluorocarbon