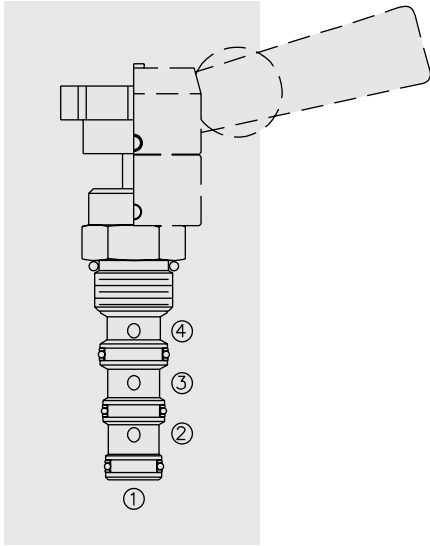


# DIRECTIONAL VALVES

## MR10-43 Manual Rotary 4-Way, 2-Pos. Directional Valve



### DESCRIPTION

A manually-operated four-way, two-position directional valve, with adaptability to a variety of adjustment operators (ordered separately).

### OPERATION

Two positions, 90° rotation. In extreme counterclockwise position ports ① and ② are open while ports ③ and ④ are closed. In extreme clockwise position, ports ① and ④ are open while ports ② and ③ are open. In transition, ports ①, ② and ③ are partially open while port ④ is closed.

### FEATURES

- Two-position detent or infinite friction lock may be ordered separately.
- May be fully pressurized at all ports.
- Optional lock-down bracket.
- Heavy-duty construction.
- Industry common cavity.

### RATINGS

**Operating Pressure:** 240 bar (3500 psi)

**Max. Flow:** See Performance Chart

**Internal Leakage:** 164 cc/minute (10 cu. in./minute) at 240 bar (3500 psi)

**Temperature:** -40 to 120°C with standard Buna N seals

**Fluids:** Mineral-based or synthetics with lubricating properties at viscosities of 7.4 to 420 cSt (50 to 2000 sus); See Temperature and Oil Viscosity, page 9.060.1

**Installation:** No position restrictions; See page 9.020.1

See page 4.990.2 for operator handles/knobs installation;

See page 4.990.1 for lock-down bracket installation.

**Cavity:** VC10-4; See page 9.110.2

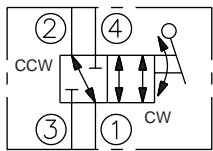
**Cavity Tool:** CT10-4XX; See page 8.600.1

**Seal Kit:** SK10-4X-MMM; See page 8.650.1

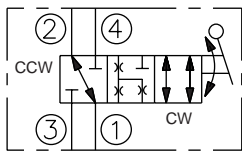
**Lock-Down Bracket Kit:** Part Number 5399000

### SYMBOLS

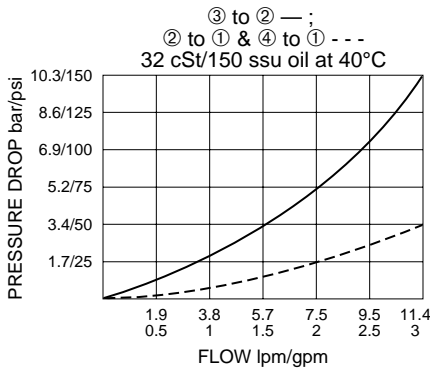
#### USASI/ISO:



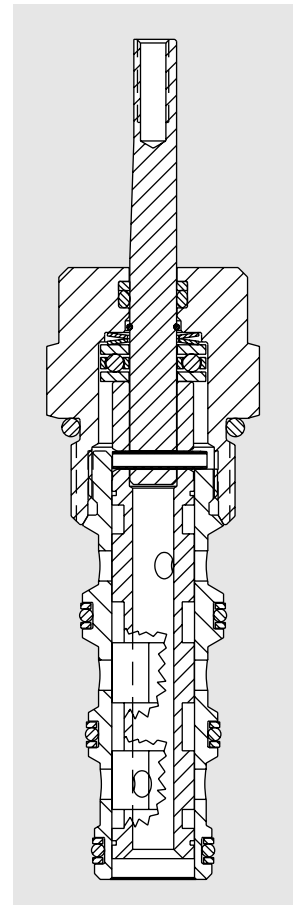
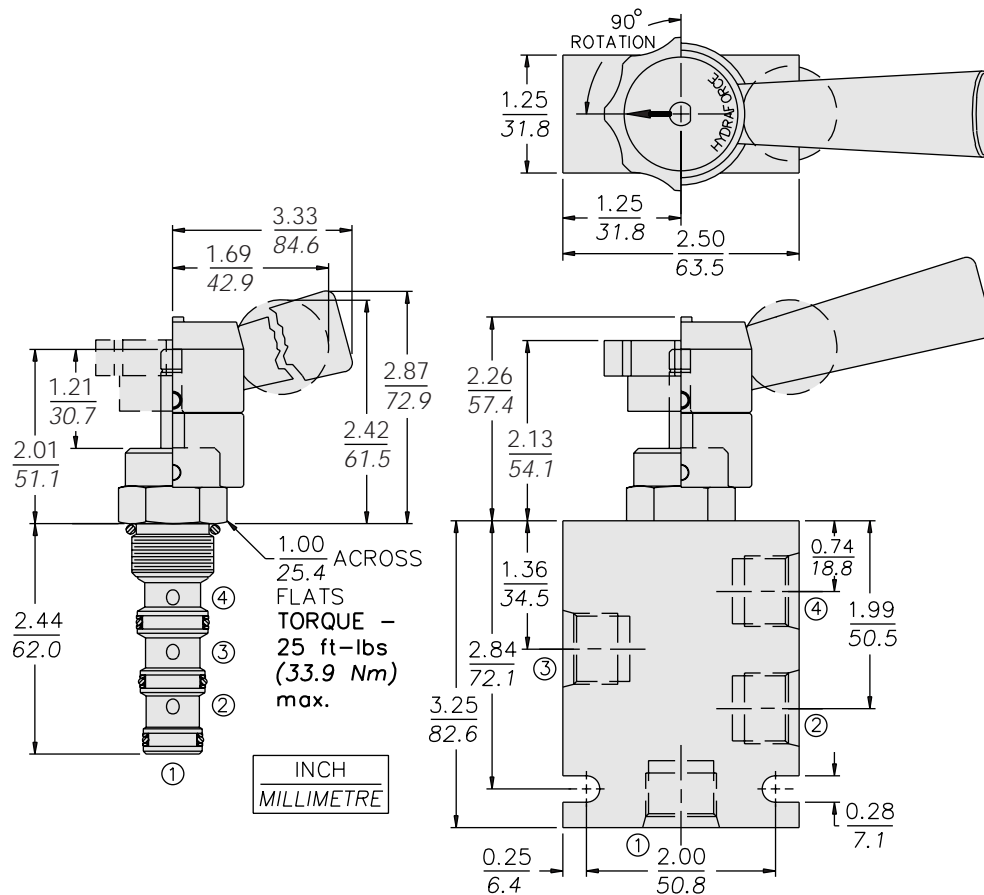
#### TRANSITION:



### PERFORMANCE (Cartridge Only)



## DIMENSIONS



## MATERIALS

**Cartridge:** Weight: 0.13 kg. (0.29 lbs.)  
Steel with hardened work surfaces.  
Zinc-plated exposed surfaces.  
Buna N O-rings and Fluorocarbon  
back-ups standard.

**Standard Ported Body:** Weight:  
0.34 kg. (0.75 lbs.) Anodized high-  
strength 6061 T6 aluminum alloy,  
rated to 207 bar (3000 psi). Ductile  
iron bodies available; dimensions  
may differ. See page 8.010.1

**Lever-Type Handle:** (Sold Separately)  
Weight: 0.18 kg. (0.38 lbs.) Steel with  
hardened work surfaces. Zinc-plated  
exposed surfaces. Plastic lever arm.

## TO ORDER

### MR10-43

#### Option

None (Blank)

#### Seals

**N** Buna N (Std.)  
**V** Fluorocarbon

#### Porting

Cartridge Only **0**  
SAE 6 **6T**  
SAE 8 **8T**  
SAE 8 with  
Lock-Down Bracket **8TL**  
1/4 in. BSP\* **2B**  
3/8 in. BSP\* **3B**

NOTE: To order standard  
operator kits, refer to pages  
4.770.1 and 4.770.2

\*BSP Body;  
U.K. Mfr. Only