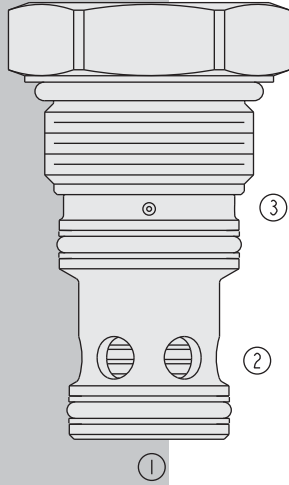


DIRECTIONAL VALVES

HEP16-S35 HyPerformance™ Piloted Spool-Type



DESCRIPTION

A high-pressure spool-type, screw-in, cartridge-style, hydraulic directional element, with multi-function potential when used with other directional, pressure, or flow control devices.

OPERATION

The **HEP16-S35** is a spring-biased blocking valve which will shift to allow full flow from ① to ② only when pressure at ① exceeds the cumulative pressure of ③, plus the bias spring pressure value.

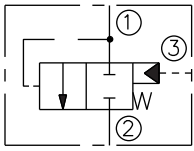
HEP16-S35 is a pilot-to-close directional valve.

With no pressure at ③, flow will be allowed from ① to ② once the bias spring force is overcome with pressure at ①.

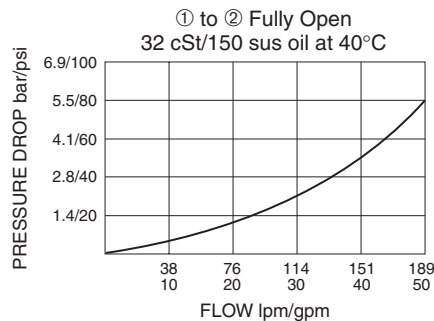
FEATURES

- Multiple function/application potential.
- Low pressure drop.
- ◁ All HyPerformance products are tested to the rigorous standards of the NFPA specification T2.6.1.
- ‡ All HyPerformance valves are tested at a verification level of 90% and an assurance of 99%.

SYMBOL



PERFORMANCE (Cartridge Only)



RATINGS

Operating Pressure: 350 bar (5075 psi); 10% cycle life: 420 bar (6090 psi)

Note: All HyPerformance products are tested for 900K cycles at 350 bar and 100K at 420 bar.

Proof Pressure: 690 bar (10000 psi)

Burst Pressure: 1380 bar (20000 psi)

Flow: 190 lpm (50 gpm)

Internal Leakage: 164 ml/minute (10 cu. in./minute) max. at 350 bar (5075 psi)

Operating Temperature: -54 to 107°C (-65 to 225°F) with Urethane seals

Filtration: See page 9.010.1

Fluids: Mineral-based or synthetics with lubricating properties at viscosities of 7.4 to 420 cSt (50 to 2000 sus); See Temperature and Oil Viscosity, page 9.060.1

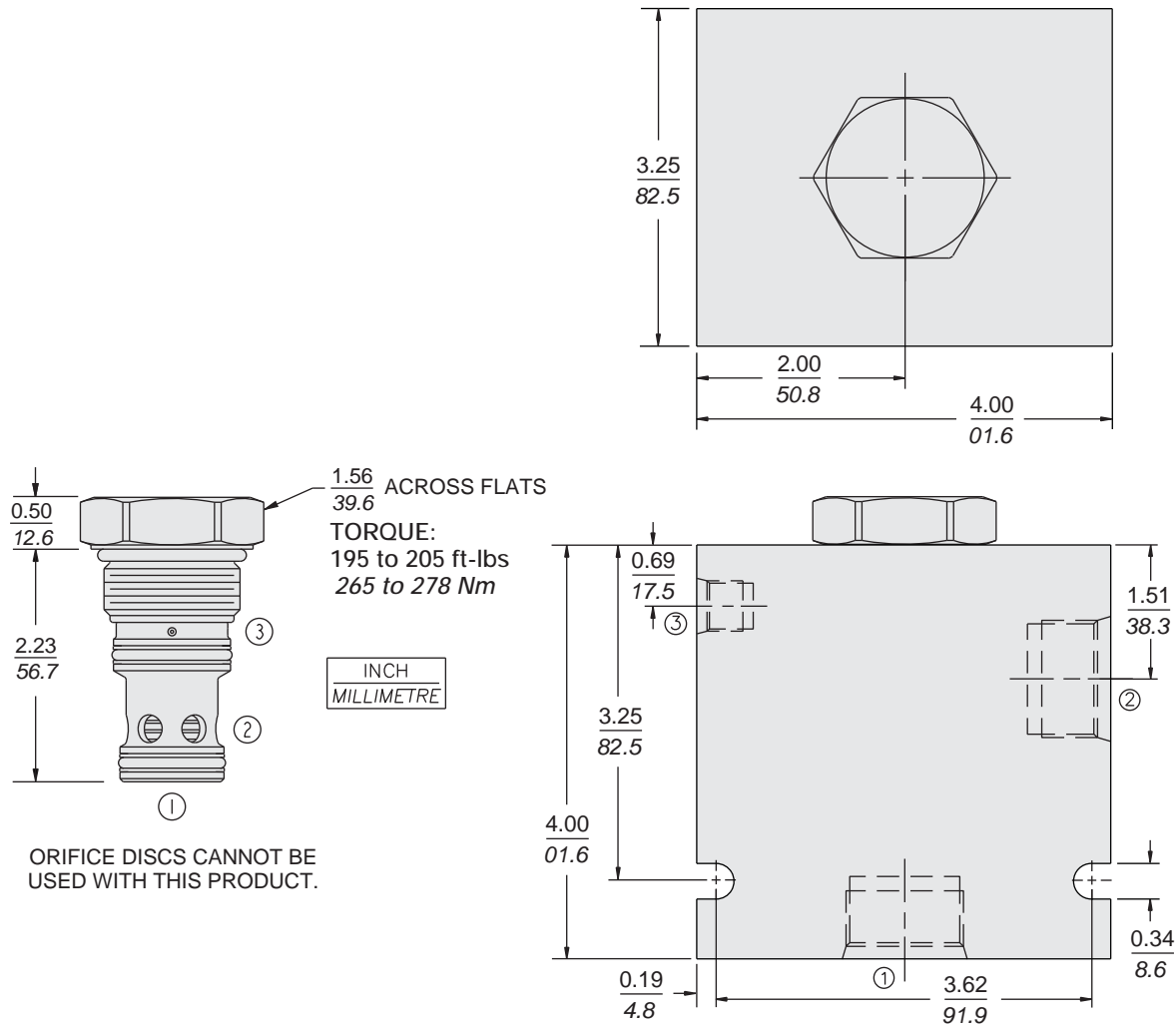
Installation: No restrictions; See page 9.020.1

Cavity: HVC16-S3; See page 9.116.1

Cavity Tool: HCT16-S3XX; See page 8.600.1

Seal Kit: SK16-S3X-X; See page 8.650.1

DIMENSIONS



MATERIALS

Cartridge: Weight: 0.30 kg. (0.67 lbs.)
 Steel with hardened work surfaces.
 Zinc-nickel plated exposed surfaces.
 PPDI Urethane seals with no backup rings standard.

Ported Body: Weight: 5.34 kg. (11.77 lbs.); HyPerformance™
 Ductile iron (code 'D') standard.
 Rated to 345 bar (5000 psi).

TO ORDER

HEP16-S35 - - -

Porting	Bias Spring Value
Cartridge Only 0	10 0.7 bar (10 psi)
SAE 16 16TD	20 1.4 bar (20 psi)
1 in. BSP* 8BD	40 2.8 bar (40 psi)
*BSP Body; U.K. Mfr. Only	70 4.8 bar (70 psi)

Seals

U PPDI Urethane — Recommended for pressures above 241 bar (3500 psi)