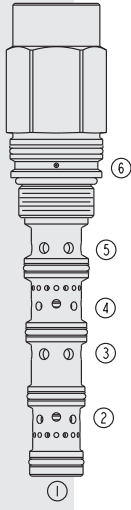
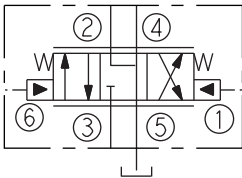


HPE16-S67K HyPerformance™ Proportional

U.S. Patent
6,554,014



ISO SYMBOL



DESCRIPTION

A high pressure, screw-in, cartridge-style, proportional, spring-centered spool, pilot operated hydraulic directional valve.

OPERATION

When the HPE16-S67K is in neutral position, inlet port 3 is blocked while ports 2, 4 and 5 are connected to each other. On remote pilot signal at port 1, the valve's spool shifts proportionally to the applied pilot pressure to allow flow from 3 to 4 through a load such as a hydraulic cylinder or motor, and then from 2 to 5 and to tank. Port 5 is to be used as a tank port only with maximum pressure of 69 bar (1000 psi). On remote pilot signal at 6, the spool shifts proportionally to the applied pressure in the opposite direction, reversing the flow direction.

The spool is non-symmetrical, providing only meter-in control.

FEATURES

- Hardened spool and cage for long life.
- Cost-effective cavity.
- Excellent metering characteristics.
- Good linearity.
- All HyPerformance™ products are tested to the rigorous standards of the NFPA specification T2.6.1 and are tested at a verification level of 90% and an assurance of 99%.

RATINGS

Maximum Operating Pressure: Ports 2, 3, 4 (work): 350 bar (5075 psi)
(10% life cycle) 420 bar (6090 psi); Ports 1 and 6 (pilot): 35 bar (500 psi);
Port 5 (tank): 69 bar (1000 psi)

Flow Rating: 95 lpm (25 gpm)

Proof Pressure: 690 bar (10000 psi)

Burst Pressure: 1380 bar (20000 psi)

Internal Leakage: 500 ml/minute (30 cu. in./minute) at 350 bar (5075 psi) maximum

Temperature: -54°C to 107°C (-65°F to 225°F) with urethane seals

Filtration: See page 9.010.1

Fluids: Mineral-based or synthetics with lubricating properties at viscosities of 7.4 to 420 cSt (50 to 2000 sus); See Temperature and Oil Viscosity, page 9.060.1

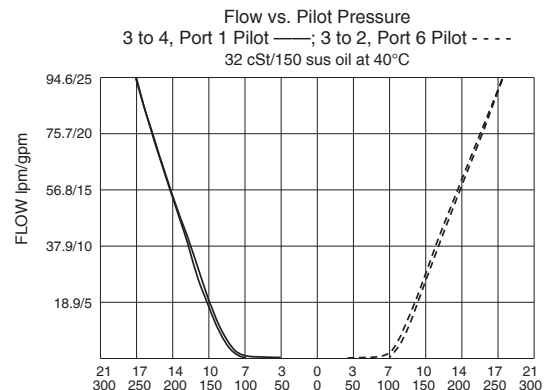
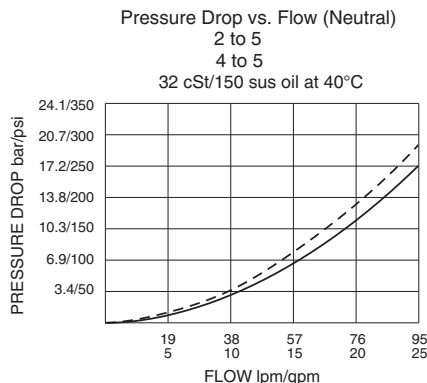
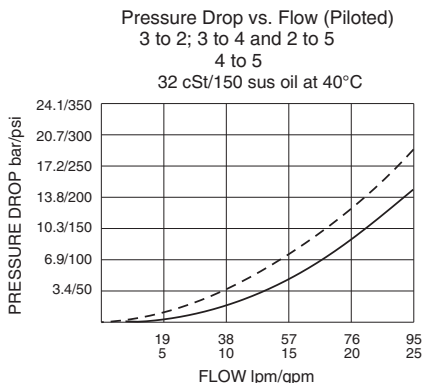
Installation: No restrictions; See page 9.020.1

Cavity: HVC16-S6; See page 9.116.1

Cavity Tool: HCT16-S6; See page 8.600.1

Seal Kit: HSK16-S6U-0000; See page 8.650.1

PERFORMANCE (Cartridge Only)

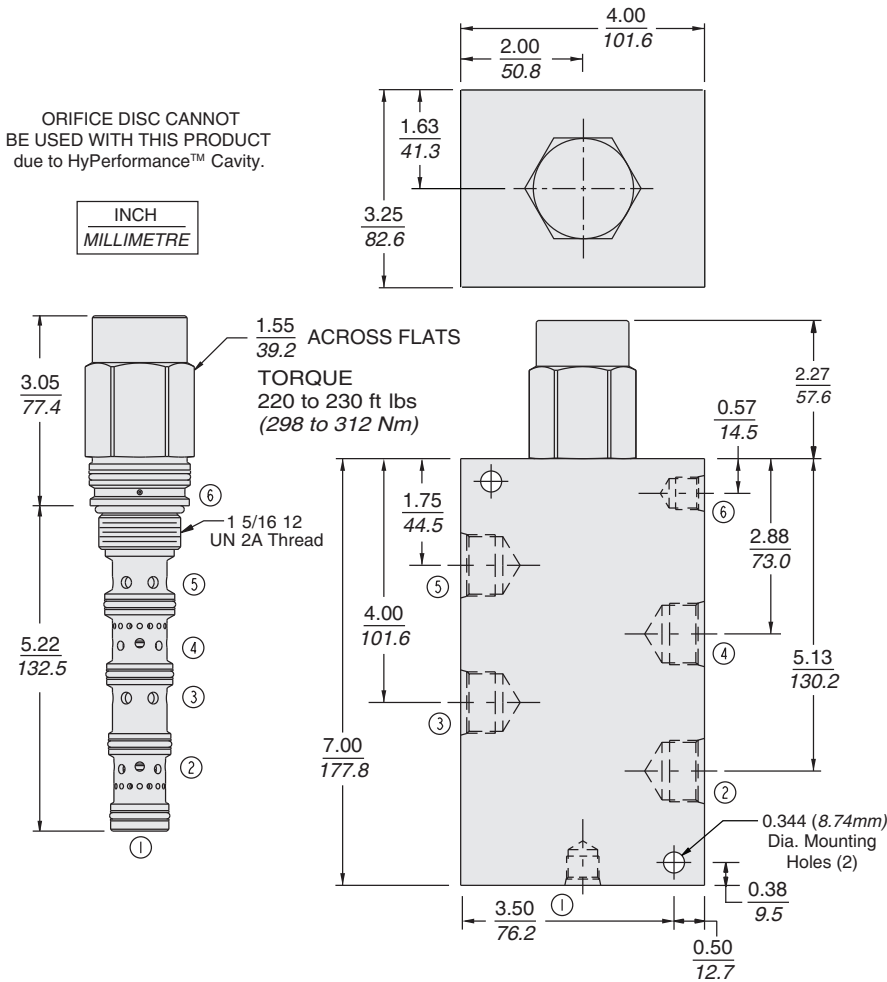


Pilot Operated

HPE16-S67K

DIMENSIONS

U.S. Patent 6,554,014



MATERIALS

Cartridge: Weight: 1.1 kg. (2.4 lbs.)
Steel with hardened work surfaces.
Zinc-plated exposed surfaces.
Urethane seals without back-up rings standard.

Ported Body: Weight: 9.13 kg.
(20.14 lbs.) HyPerformance™ ductile iron (code 'D') standard. Rated to 345 bar (5000 psi). See page 8.016.1

TO ORDER

HPE16-S67K - -

Porting
Cartridge Only 0
SAE 16 16TD
1" BSP *8BD

*BSP body; U.K. mfr. only

Seals
U* PPDI Urethane

*Urethane seals recommended for operating pressures above 241 bar (3500 psi).

NOTE: Consult factory for additional seal options.