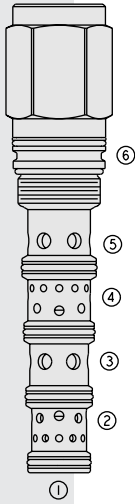


DIRECTIONAL VALVES

PE42-S67D Proportional, Pilot Operated

U.S. Patent
6,554,014



DESCRIPTION

A screw-in, cartridge-style, proportional, spring-centered, pilot-operated spool-type hydraulic directional valve.

OPERATION

When the **PE42-S67D** is in neutral position port ③ is blocked and ports ②, ④ and ⑤ are connected to each other. When the remote pilot signal at ① exceeds the force of the bias spring the spool shifts proportionally to the applied pilot pressure to allow flow from ③ to ④ and from ② to ⑤, and to tank. On remote pilot signal at ⑥, the spool shifts proportionally to the applied force in the opposite direction, thus reversing the flow direction. **The spool is symmetrical and provides meter-in and meter-out control.**

FEATURES

- Hardened spool and cage for long life.
- Excellent metering characteristics.
- Good linearity.

RATINGS

Maximum Operating Pressure: Port ③: 345 bar (5000 psi)
Ports ② and ④: 240 bar (3500 psi)
Ports ① and ⑥: 27.6 bar (400 psi)

Flow: See Performance Chart

Internal Leakage: 737 ml/minute (45 cu. in./minute) at 207 bar (3000 psi)

Temperature: -40 to 120°C with standard Buna N seals

Filtration: See page 9.010.1

Fluids: Mineral-based or synthetics with lubricating properties at viscosities of 7.4 to 420 cSt (50 to 2000 sus); See Temperature and Oil Viscosity, page 9.060.1

Installation: No restrictions; See page 9.020.1

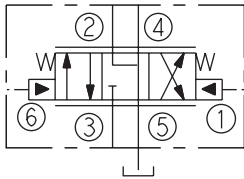
Cavity: VC42-S6; See page 9.142.1

Cavity Tool: CT42-S6; See page 8.600.1

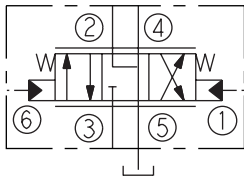
Seal Kit: SK42-S6X-BMMMM; See page 8.650.1

SYMBOLS

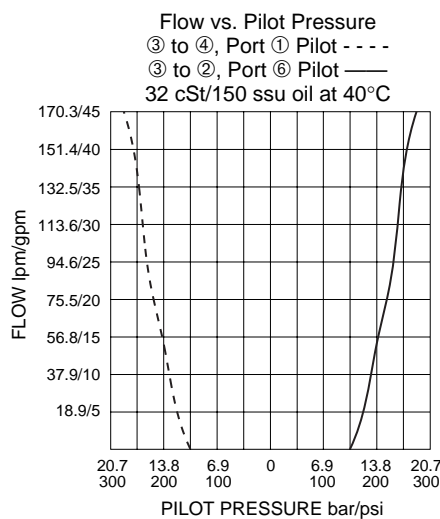
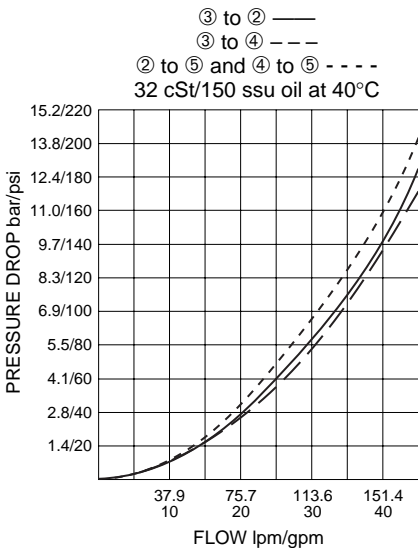
USASI:



ISO:

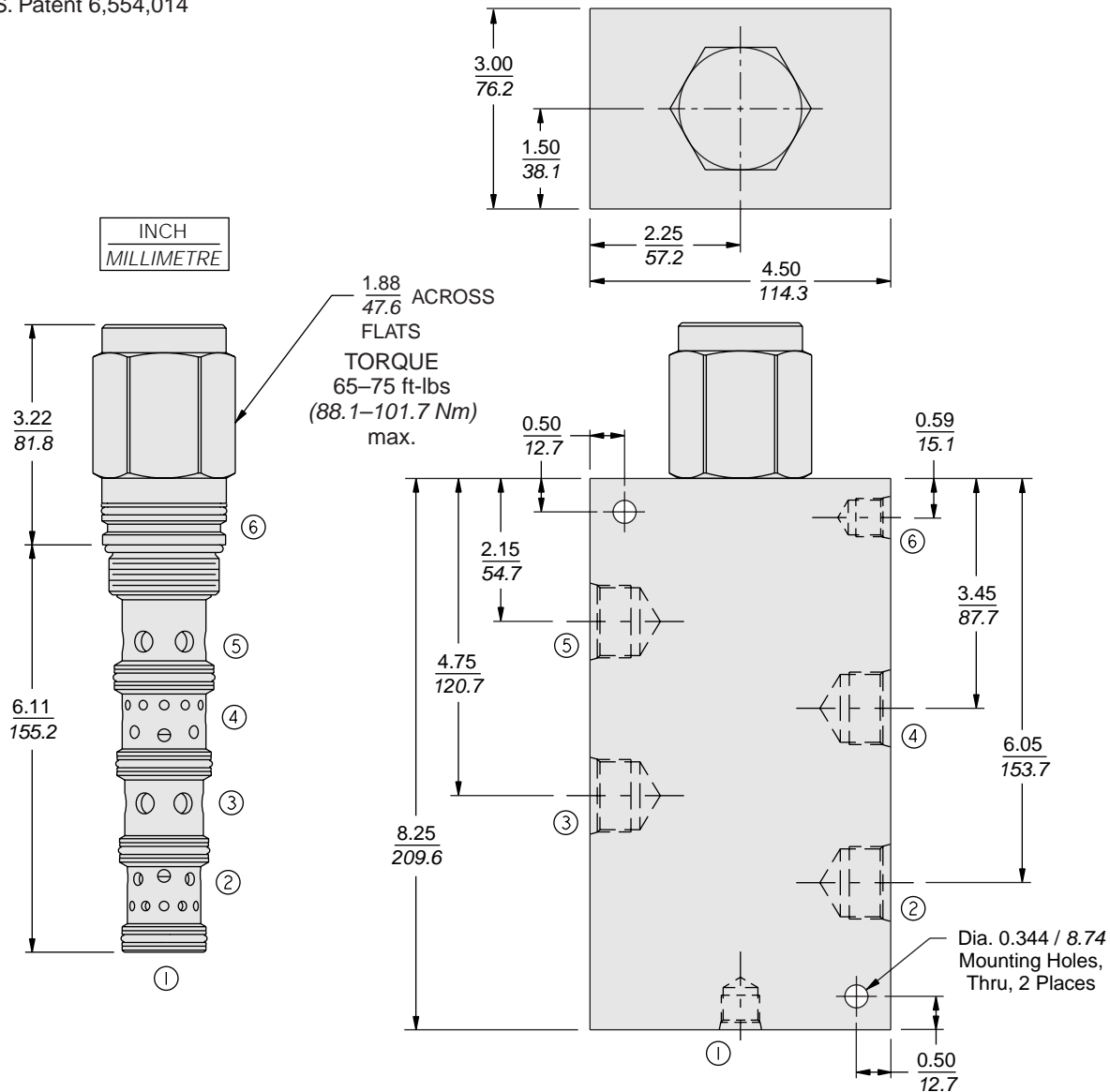


PERFORMANCE (Cartridge Only)



DIMENSIONS

U.S. Patent 6,554,014



MATERIALS

Cartridge: Weight: 0.76 kg. (1.68 lbs.)
Steel with hardened work surfaces.
Zinc-plated exposed surfaces.
Buna N O-rings and polyester elastomer back-ups standard.

Ported Body: Ductile Iron,
Rated to 345 bar (5000 psi).
See page 8.042.1

TO ORDER

PE42-S67D - -

Porting
Cartridge Only **0**
SAE 12 **12TD**
SAE 16 **16TD**
SAE 20 **20TD**
*3/4 in. BSP **6BD**
*1 in. BSP **8BD**
*1-1/4 in. BSP **10BD**

*BSP Body; U.K. Mfr. Only

Seals
N Buna N (Std.)
P Polyurethane (Required for pressures over 240 bar/3500 psi)
V Fluorocarbon