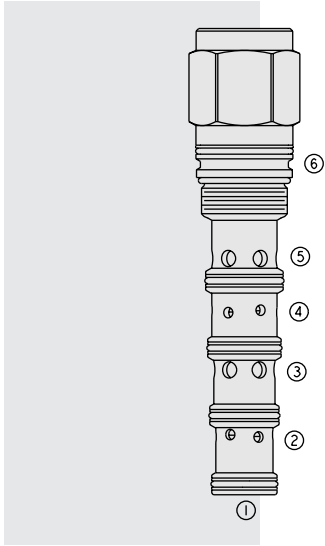


DIRECTIONAL VALVES

PD42-S67B Piloted, 4-Way Spool-Type Valve



DESCRIPTION

A screw-in, cartridge-style, pilot-operated spool-type hydraulic directional valve.

OPERATION

When the **PD42-S67B** is in neutral position, flow is allowed between ports ②, ③ and ⑤. When the remote pilot signal at ① exceeds the force of the bias spring, the spool shifts to allow flow between ③ and ④, and between ② and ⑤. On remote pilot signal at ⑥, the spool shifts to allow flow between ③ and ②, and between ④ and ⑤.

FEATURES

- Hardened spool and cage for long life.

RATINGS

Operating Pressure: 324 bar (4700 psi) at ports ②, ③ and ④;

28 bar (400 psi) at ports ① and ⑥ with standard Buna N seals.

Flow: 0–189 lpm (0–50 gpm); See Performance Chart

Temperature: -40 to 120°C with Buna N seals

Filtration: See page 9.010.1

Fluids: Mineral-based or synthetics with lubricating properties at viscosities of

7.4 to 420 cSt (50 to 2000 sus); See Temperature and Oil Viscosity, page 9.060.1

Installation: No restrictions; See page 9.020.1

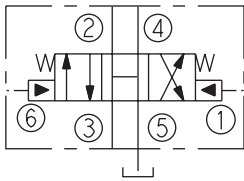
Cavity: VC42-S6; See page 9.142.1

Cavity Tool: CT42-S6X; See page 8.600.1

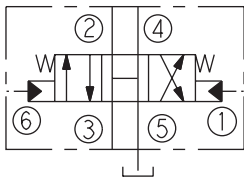
Seal Kit: SK42-S6X-BMMMM; See page 8.650.1

SYMBOLS

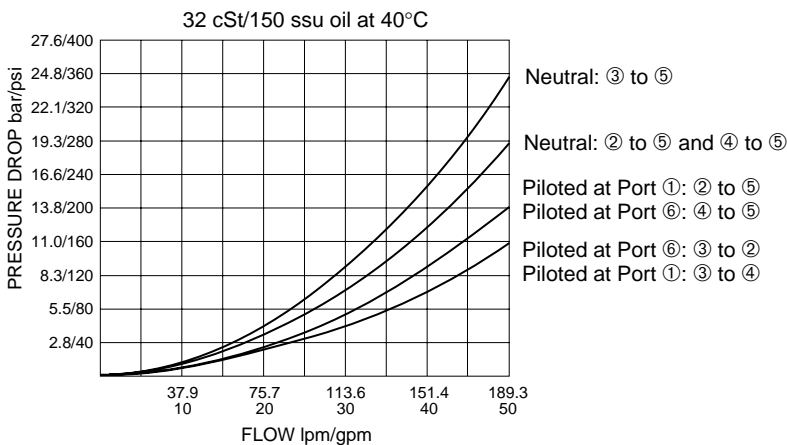
USASI:



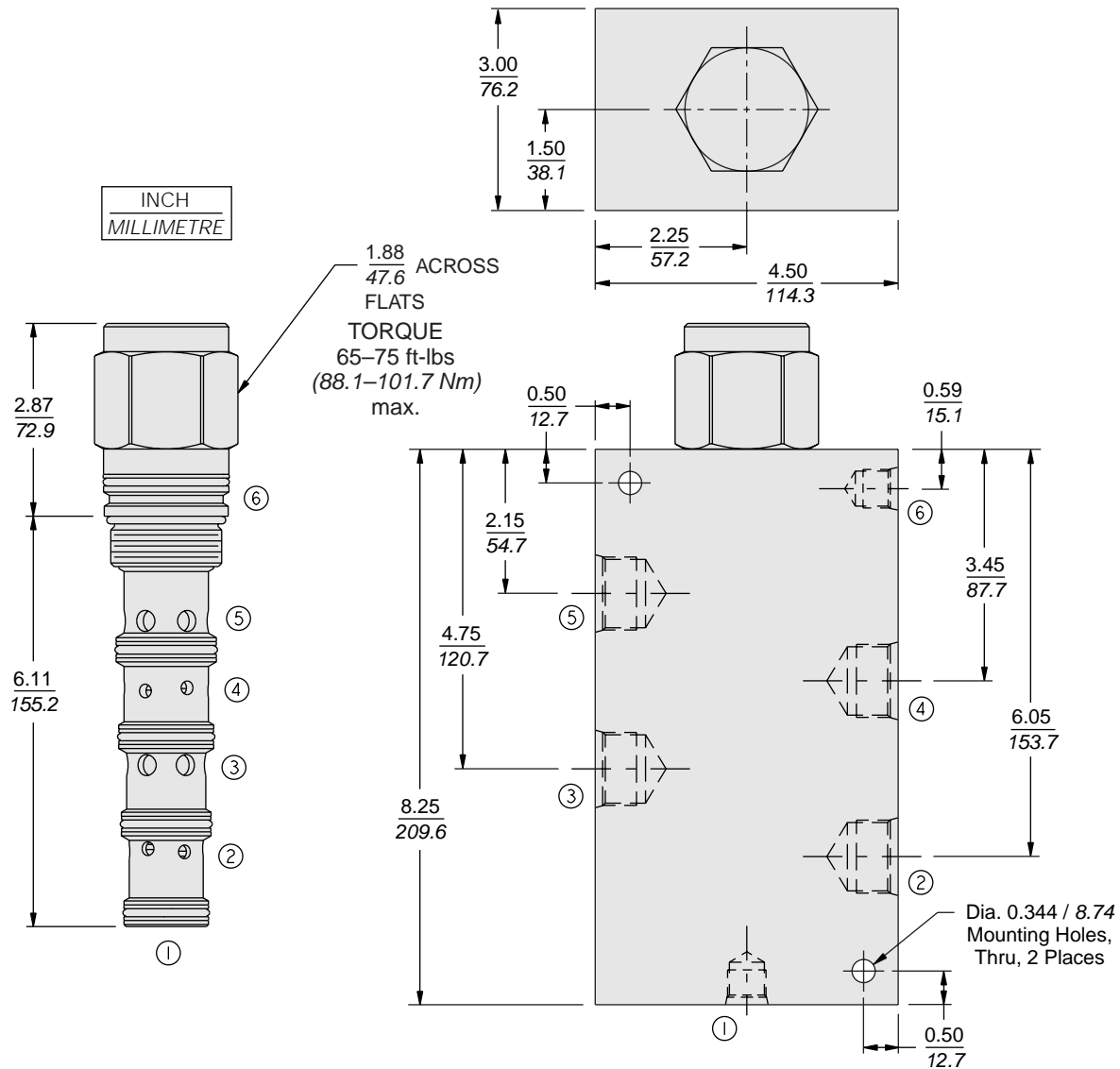
ISO:



PERFORMANCE (Cartridge Only)



DIMENSIONS



MATERIALS

Cartridge: Weight: 0.76 kg. (1.68 lbs.)
Steel with hardened work surfaces.
Zinc-plated exposed surfaces.
Buna N O-rings and polyester elastomer back-ups standard.

Ported Body: Ductile Iron,
Rated to 345 bar (5000 psi).
See page 8.042.1

TO ORDER

PD42-S67B - - -170[‡]

Porting
Cartridge Only **0**
SAE 12 **12TD**
SAE 16 **16TD**
SAE 20 **20TD**
*3/4 in. BSP **6BD**
*1 in. BSP **8BD**
*1-1/4 in. BSP **10BD**
*BSP Body; U.K. Mfr. Only

*170 psi (11.7 bar) bias spring standard. Optional bias springs considered on OEM request.

Seals
N Buna N (Std.)
P Polyurethane (Required for pressures over 240 bar/3500 psi)
V Fluorocarbon