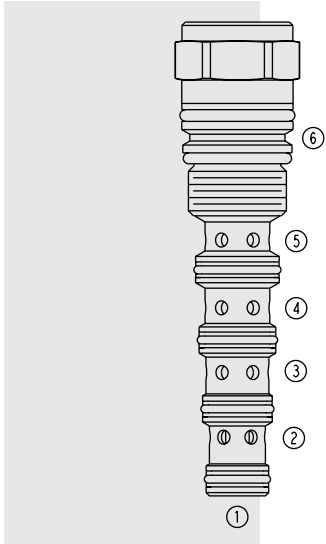


DIRECTIONAL VALVES

PD10-S62 Piloted Directional Valve



DESCRIPTION

A screw-in, cartridge-style, pilot-operated, spool-type, hydraulic cartridge valve.

OPERATION

In the neutral position, the **PD10-S62** allows flow between ports ② and ③ and between ports ④ and ⑤ bidirectionally. When the remote pilot signal at ① exceeds the force of the bias spring, the spool shifts to block flow at all ports.

The spring chamber is vented to the tank through port ⑥. The vented spring chamber allows the valve to be fully pressurized at ports ①, ②, ③, ④ and ⑤ without affecting required pilot pressure. Pressure at ⑥ will affect required pilot pressure.

FEATURES

- Hardened spool and cage for long life.
- Optional sealed spool between ports ① and ②.

RATINGS

Maximum Operating Pressure: 250 bar (3625 psi) with standard Buna N seals.

Maximum Total Input Flow: 53 lpm (14 gpm) in any combination of flows between ports ② and ③, and ports ④ and ⑤ (e.g., 2 & 12 gpm, 7 & 7 gpm, or 10 & 4 gpm).

Internal Leakage: Maximum leakage at 250 bar (3625 psi):
131 ml/minute (8 cu. in./minute).

Temperature: -40 to 120°C (-40 to 248°F)

Filtration: See page 9.010.1

Fluids: Mineral-based or synthetics with lubricating properties at viscosities of 7.4 to 420 cSt (50 to 2000 sus); See Temperature and Oil Viscosity, page 9.060.1

Installation: No restrictions; See page 9.020.1

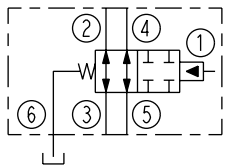
Cavity: VC10-S6; See page 9.110.1

Cavity Tool: CT10-S6X; See page 8.600.1

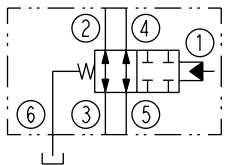
Seal Kit: SK10-S6X-BMMMM; See page 8.650.1

SYMBOLS

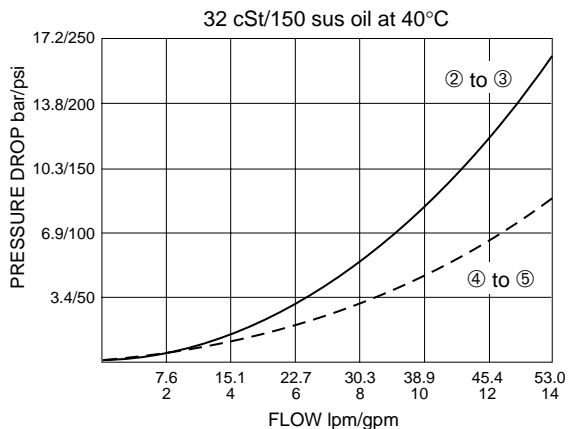
USASI:



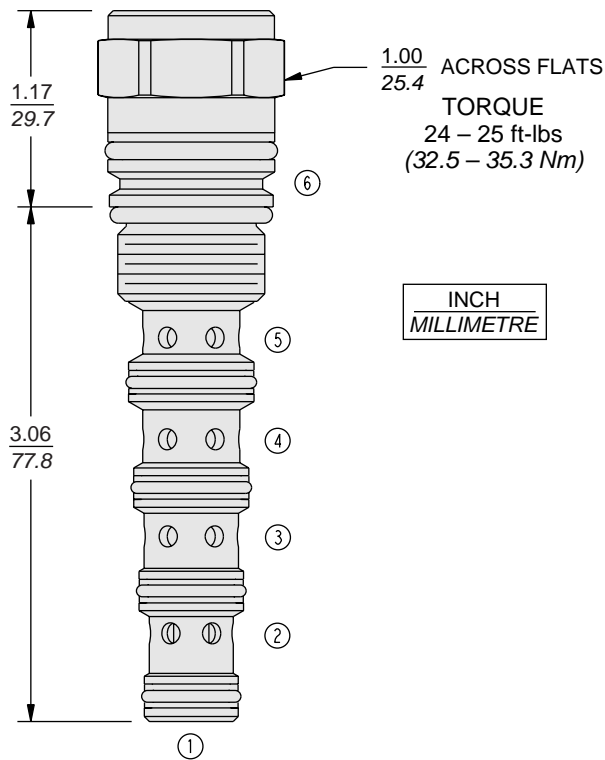
ISO:



PERFORMANCE (Cartridge Only)



DIMENSIONS



MATERIALS

Cartridge: Weight: 0.20 kg. (0.45 lbs.)
Steel with hardened work surfaces.
Zinc-plated exposed surfaces.
Buna N O-rings and polyester elastomer back-ups standard.

TO ORDER

