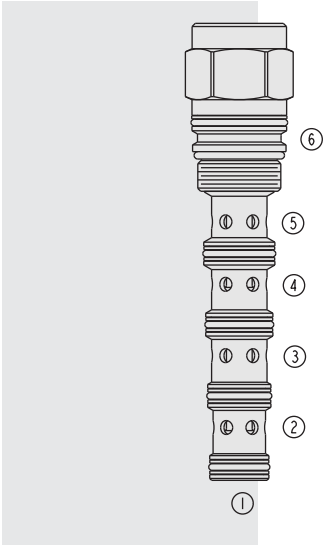


DIRECTIONAL VALVES

PD16-S61N Piloted 4-Way Spool



DESCRIPTION

A screw-in, cartridge-style, pilot-operated, spool-type, hydraulic directional valve.

OPERATION

When in neutral the **PD16-S61N** allows flow between ports ② and ③, and between ports ④ and ⑤. On remote pilot signal at ①, the valve's spool shifts to allow flow between ③ and ④ while blocking ② and ⑤. The spring chamber is vented to the tank through port ⑥. The vented spring chamber allows the valve to be fully pressurized at ports ①, ②, ③, ④ and ⑤ without affecting required pilot pressure. Pressure at port ⑥ will affect required pilot pressure.

FEATURES

- Hardened spool and cage for long life.
- 60, 110 and 170 psi bias springs available.

RATINGS

Operating Pressure: 240 bar (3500 psi)

Flow: 0–151 lpm (0–40 gpm); See Performance Chart

Maximum Internal Leakage: at 207 bar (3000 psi): 164 ml/minute (10 cu. in./minute)

Pilot Pressure Required: 4.1 bar (60 psi) minimum

Oil Volume Required to Full Shift: 1.5 cc (0.09 cu. in.)

Temperature: -40 to 120°C

Filtration: See page 9.010.1

Fluids: Mineral-based or synthetics with lubricating properties at viscosities of 7.4 to 420 cSt (50 to 2000 sus); See Temperature and Oil Viscosity, page 9.060.1

Installation: No restrictions; See page 9.020.1

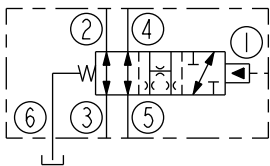
Cavity: VC16-S6; See page 9.116.1

Cavity Tool: CT16-S6XX; See page 8.600.1

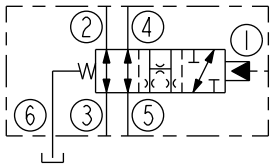
Seal Kit: SK16-S6X-BMMMM; See page 8.650.1

SYMBOLS

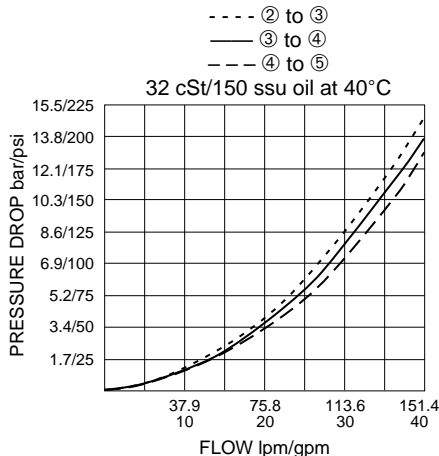
USASI:



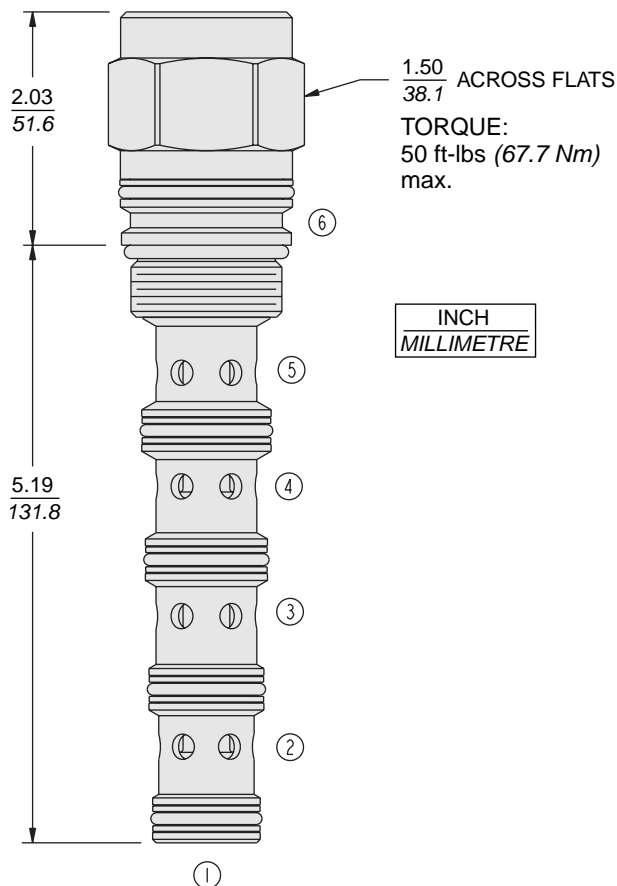
ISO:



PERFORMANCE (Cartridge Only)



DIMENSIONS



MATERIALS

Cartridge: Weight: 0.25 kg. (0.55 lbs.)
Steel with hardened work surfaces.
Zinc-plated exposed surfaces.
Buna N O-rings and polyester elastomer back-ups standard.

Ported Body: Consult factory.

TO ORDER

PD16-S61N -

