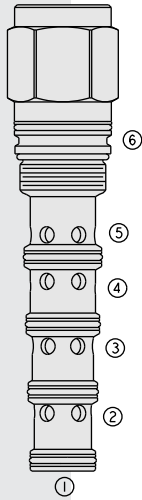


PD42-S60N Piloted, 2-Position, 4-Way Spool



DESCRIPTION

A screw-in, cartridge-style, pilot-operated, 2-position, 4-way, spool-type, hydraulic directional valve.

OPERATION

In the neutral position, the **PD42-S60N** allows flow between ports 2 and 3 and from 4 to 5. On remote pilot signal at 1, the valve shifts to allow flow between ports 3 and 4, and from 2 to 5.

The spring chamber is vented to the tank through port 6. The vented spring chamber allows the valve to be fully pressurized at ports 2, 3, and 4 without affecting required pilot pressure. Pressure at 6 will affect required pilot pressure.

FEATURES

- Hardened spool and cage for long life.

RATINGS

Maximum Operating Pressure: ports 2, 3 and 4: 324 bar (4700 psi);

Port 1: 28 bar (400 psi)

Flow: 0 to 189 lpm (0 to 50 gpm); See Performance Chart

Internal Leakage: Maximum leakage at 207 bar (3000 psi):

1.31 liters/minute (80 cu. in./minute).

Temperature: -40 to 120°C (-40 to 248°F)

Filtration: See page 9.010.1

Fluids: Mineral-based or synthetics with lubricating properties at viscosities of

7.4 to 420 cSt (50 to 2000 sus); See Temperature and Oil Viscosity, page 9.060.1

Installation: No restrictions; See page 9.020.1

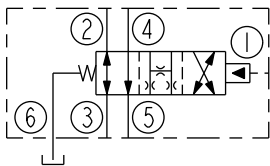
Cavity: VC42-S6; See page 9.142.1

Cavity Tool: CT42-S6XX; See page 8.600.1

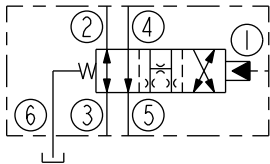
Seal Kit: SK42-S6X-BMMMM; See page 8.650.1

SYMBOLS

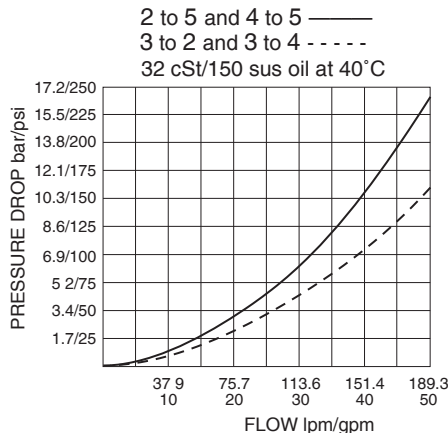
USASI:



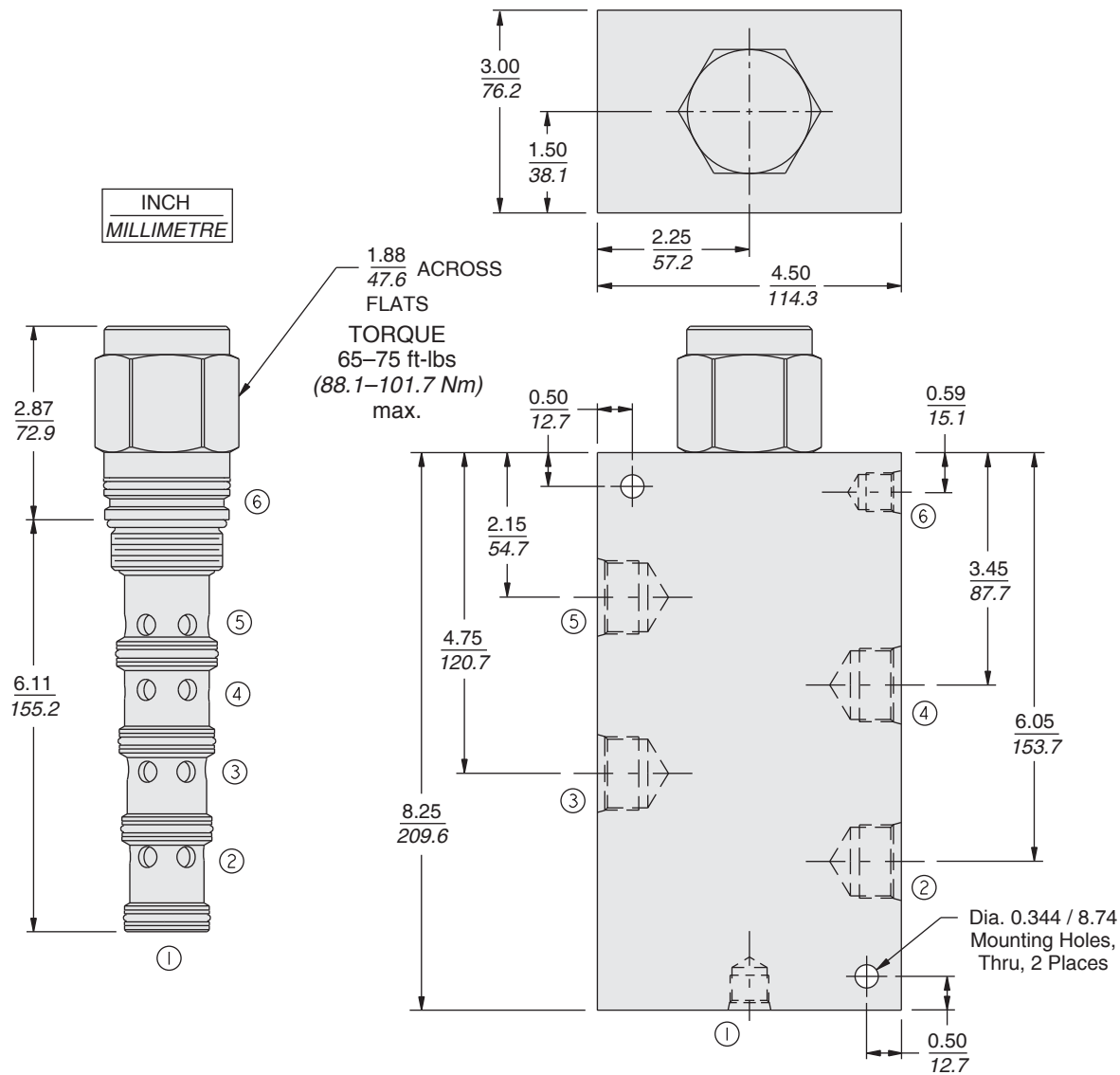
ISO:



PERFORMANCE (Cartridge Only)



DIMENSIONS



MATERIALS

Cartridge: Weight: 0.76 kg. (1.68 lbs.)
Steel with hardened work surfaces.
Zinc-plated exposed surfaces.
Buna N O-rings and polyester
elastomer back-ups standard.

Ported Body: Ductile Iron,
Rated to 345 bar (5000 psi).
See page 8.042.1.

TO ORDER

PD42-S60N - - -170#

Porting
Cartridge Only 0
SAE 12 12TD
SAE 16 16TD
SAE 20 20TD
*3/4 in. BSP 6BD
*1 in. BSP 8BD
*1-1/4 in. BSP 10BD
*BSP Body; U.K. Mfr. Only

*170 psi (11.7 bar) bias spring
standard. Optional bias springs
considered on OEM request.

Seals
N Buna N (Std.)
NS Buna N with Sealed Spool between 1 and 2
P Polyurethane
PS Polyurethane with Sealed Spool between 1 and 2
V Fluorocarbon
VS Fluorocarbon with Sealed Spool between 1 and 2

Note: Polyurethane seals are required for operation over 240 bar/3500 psi