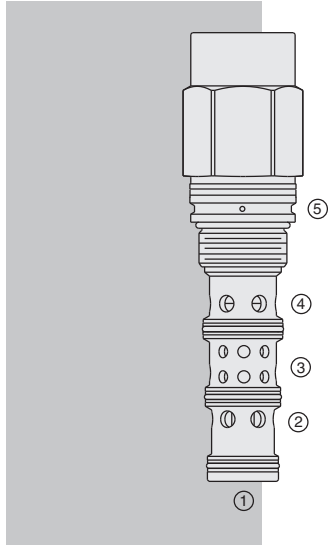


HPD42-S52 HyPerformance™ Piloted 3-Way Spool



DESCRIPTION

A screw-in, cartridge-style, pilot-operated, spool-type, hydraulic directional valve for use in high pressure applications.

OPERATION

When in neutral the **HPD42-S52** blocks flow between all ports. On remote pilot signal at 1, the valve's spool shifts to allow flow between ports 2, 3 and 4. The spring chamber is vented to the tank through port 5. The vented spring chamber allows the valve to be fully pressurized at ports 1, 2, 3, and 4 without affecting required pilot pressure. Pressure at port 5 will increase the required pilot pressure at a 1:1 ratio.

FEATURES

- Hardened spool and cage for long life.
- All HyPerformance™ products are tested to the rigorous standards of the NFPA specification T2.6.1.
- All HyPerformance™ valves are tested at a verification level of 90% and an assurance of 99%.

RATINGS

Operating Pressure: 350 bar (5075 psi); 10% cycle life: 420 bar (6090 psi)

Note: All HyPerformance™ products are tested for 900K cycles at 350 bar and 100K at 420 bar.

Proof Pressure: 690 bar (10000 psi)

Burst Pressure: 1380 bar (20000 psi)

Flow Rating: Maximum total input flow 265 lpm (70 gpm)

Internal Leakage: 328 ml/minute (20 cu. in./minute) at 350 bar (5075 psi)

Operating Temperature: -54 to 107°C (-65 to 225°F) with PPDI urethane seals

Filtration: See page 9.010.1

Fluids: Mineral-based or synthetics with lubricating properties at viscosities of 7.4 to 420 cSt (50 to 2000 sus); See Temperature and Oil Viscosity, page 9.060.1

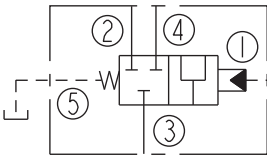
Installation: No restrictions; See page 9.020.1

Cavity: HVC42-S5; See page 9.142.1

Cavity Tool: HCT42-5XX; See page 8.600.1

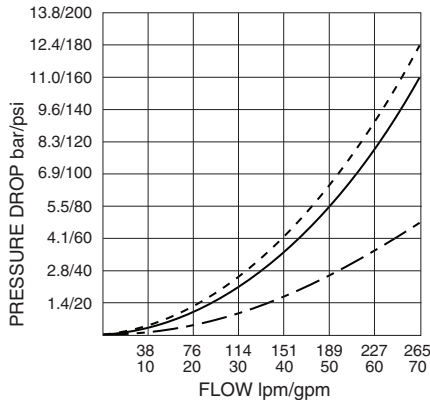
Seal Kit: HSK42-S5U-0000 (Urethane); See page 8.650.1

ISO SYMBOL

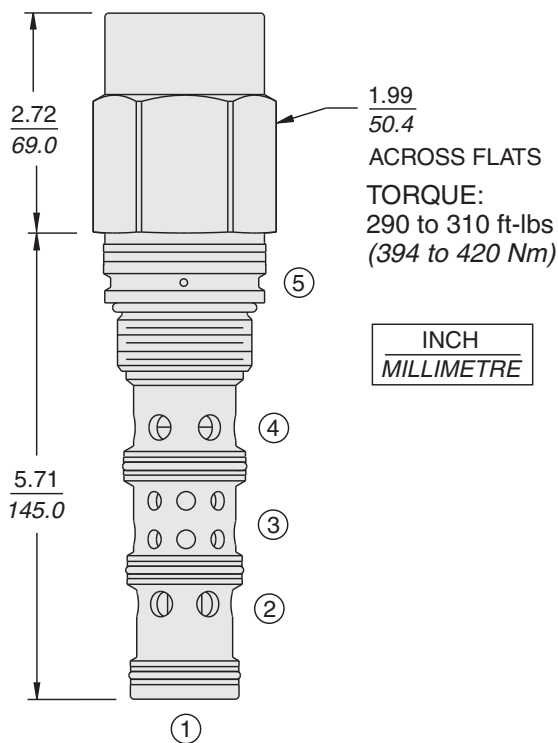


PERFORMANCE (Cartridge Only)

Pressure Drop vs. Flow
Neutral; Cartridge Only
3 to 2 - - - -; 3 to 4 ———
3 to 2 and 4 - - - -
32 cSt/150 sus oil at 40°C



DIMENSIONS



1.99
50.4
ACROSS FLATS
TORQUE:
290 to 310 ft-lbs
(394 to 420 Nm)

INCH
MILLIMETRE

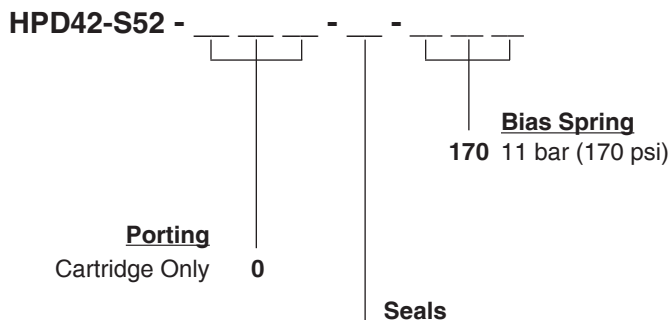
ORIFICE DISC SHOULD NOT BE USED WITH THIS PRODUCT.

MATERIALS

Cartridge: Weight: 1.9 kg. (4.2 lbs.)
Steel with hardened work surfaces.
Zinc-plated exposed surfaces.
PPDI Urethane seals and no back-up rings standard.

Ported Body: Weight: 14.0 kg (30.90 lbs) HyPerformance™ ductile iron (code 'D') standard. Rated to 345 bar (5000 psi). See page 8.042.1.

TO ORDER



U PPDI Urethane
US Sealed spool between ports 1 and 2

Note: Urethane seals recommended for operating pressures above 241 bar (3500 psi).

Note: Consult factory for additional seal options.