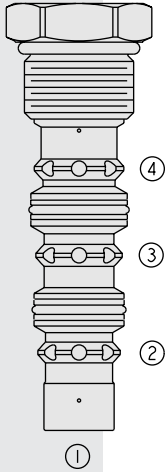


DIRECTIONAL CONTROLS

HS52-43 Low Side (Hot Oil) Shuttle,



DESCRIPTION

A spring centered, spool-type, closed in neutral, 2-position, 3-way hot oil shuttle valve, which may be used on hydrostatic transmissions to direct charge pump oil to a heat exchanger or to tank.

OPERATION

With internal piloting at port ①, ② or ④, the **HS52-43** will direct oil from the port opposite of the piloted port to port ③, thus removing oil from the low-pressure side for cooling or filtration purposes. The valve has a spring-centered spool, and is closed in neutral position.

FEATURES

- Hardened parts for long life.
- Industry common cavity.

RATINGS

Operating Pressure: 345 bar (5000 psi) when used in steel body

Flow Rate: See Performance Chart

Bias Spring Value: 4.1 bar (60 psi)

Internal Leakage: 164 cc/minute (10 cu. in./minute) max. when shifted, and 984 cc/minute (60 cu. in./minute) max. in neutral position at 207 bar (3000 psi)

Temperature: -40 to 120°C

Filtration: See page 9.010.1

Fluids: Mineral-based or synthetics with lubricating properties at viscosities of 7.4 to 420 cSt (50 to 2000 sus); See Temperature and Oil Viscosity, page 9.060.1

Installation: No restrictions; See page 9.020.1

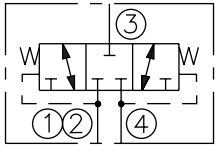
Cavity: VC12-4; See page 9.112.1

Cavity Tool: CT12-4XX; See page 8.600.1

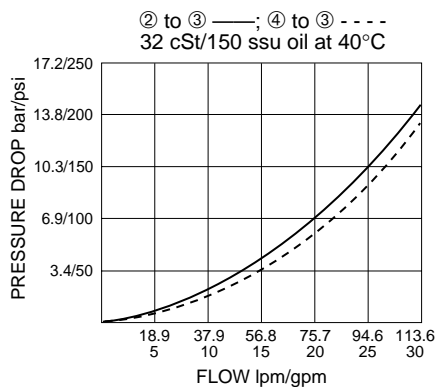
Seal Kit: SK52-4x-TB, See page 8.650.1

SYMBOLS

USASI/ISO:



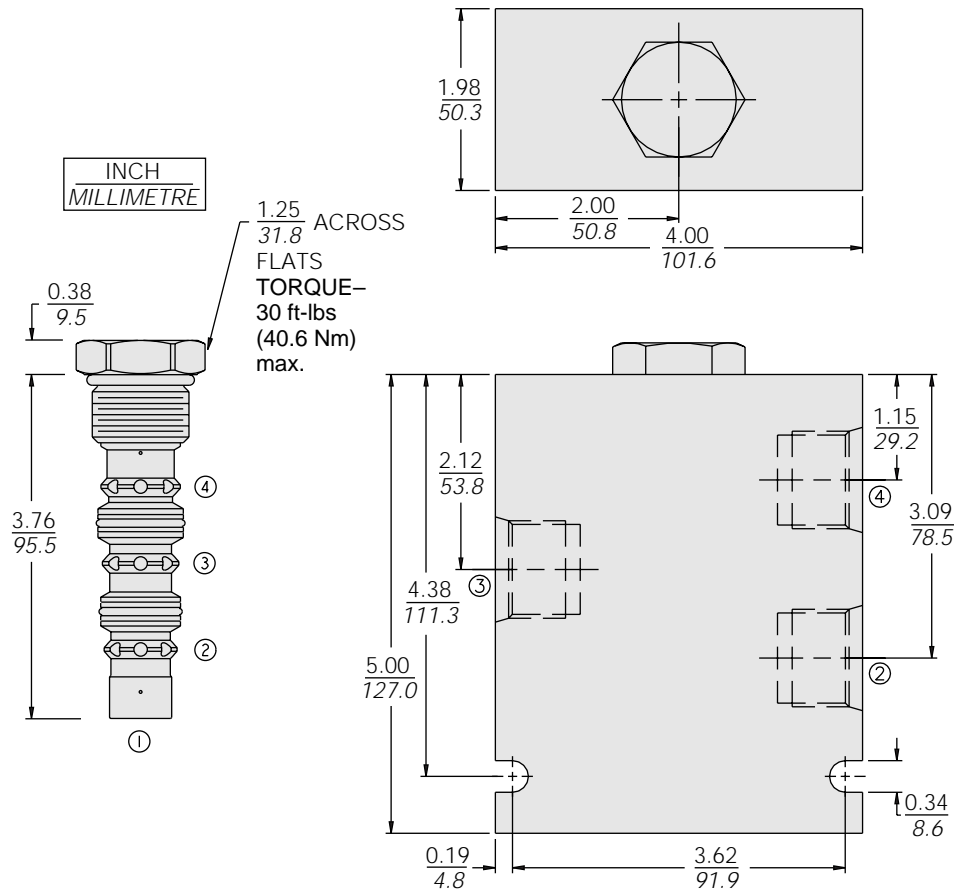
PERFORMANCE (Cartridge Only)



Spring Centered

HS52-43

DIMENSIONS



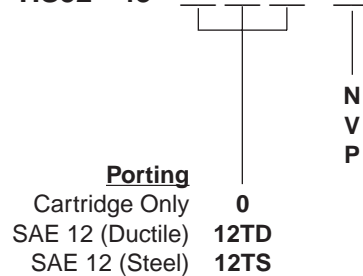
MATERIALS

Cartridge: Weight: 0.15 kg. (0.32 lbs.)
Steel with hardened work surfaces.
Zinc-plated exposed surfaces.
Polyurethane seals and polyester
elastomer back-ups required for
operation over 207 bar (3000 psi).

Ported Body: Weight: 3.57 kg.
(7.87 lbs.); Ductile Iron (code "D")
standard, rated to 345 bar (5000 psi).
Some body dimensions may differ;
See page 8.012.1

TO ORDER

HS52 - 43 -



Seals

- N Buna N (Std.)
- V Fluorocarbon
- P Polyurethane — required for
operation over 207 bar (3000 psi)