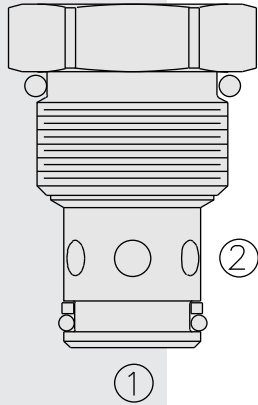


# CV10-24 Check Valve



### DESCRIPTION

A screw-in, cartridge-style, hydraulic check valve for use as a blocking or load-holding device.

### OPERATION

The CV10-24 allows flow passage from 2 to 1, while blocking flow from 1 to 2.

The cartridge has a fully guided check which is spring-biased closed until sufficient pressure is applied at 2 to open to 1.

### FEATURES

- Low check mass for anti-cavitation applications.
- Hardened seat for long life and low leakage.
- Optional bias springs for back-pressure application flexibility.
- Industry common cavity.

### RATINGS

**Operating Pressure:** 240 bar (3500 psi)

**Flow:** See Performance Chart

**Internal Leakage:** 0.25 ml/minute (5 drops/minute) max. at 241 bar (3500 psi)

**Crack Pressure Defined:** Gauge psi evident at 2 at 16.4 cc/minute (1 cu. in./minute) attained at 1

**Standard Bias Springs at Crack:** 0.35 bar (5 psi); 1.7 bar (25 psi); 3.8 bar(55 psi)

**Temperature:** -40° to 120°C (-40°F to 250°F with Buna N seals; -35°C to 204°C (-31°F to 400°F) with Viton seals

**Filtration:** See page 9.010.1

**Fluids:** Mineral-based or synthetics with lubricating properties at viscosities of 7.4 to 420 cSt (50 to 2000 sus); See Temperature and Oil Viscosity, page 9.060.1

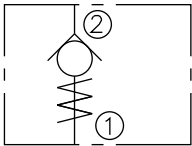
**Installation:** No restrictions; See page 9.020.1

**Cavity:** VC10-2; See page 9.110.1

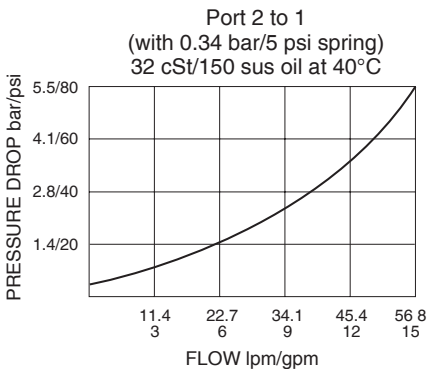
**Cavity Tool:** CT10-2XX; See page 8.600.1

**Seal Kits:** SK10-2X-B; See page 8.650.1

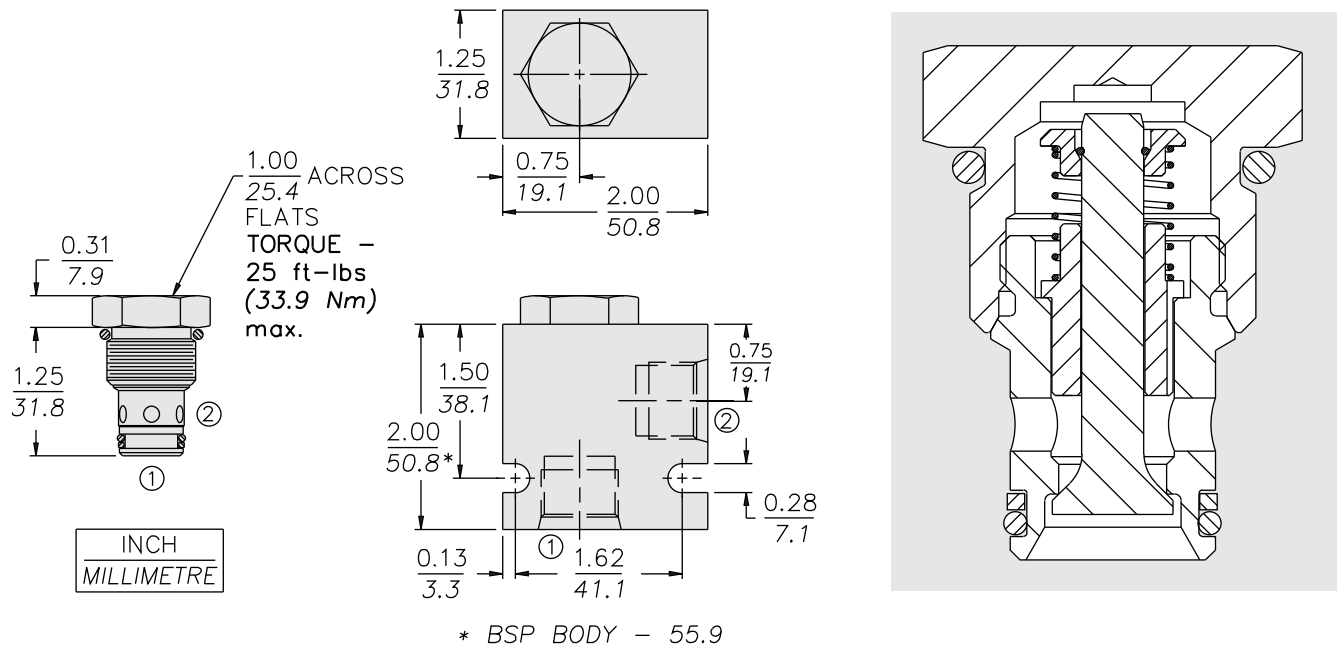
### ISO SYMBOL



### PERFORMANCE (Cartridge Only)



## DIMENSIONS



## MATERIALS

**Cartridge:** Weight: 0.9 kg. (0.20 lbs.)  
Steel with hardened work surfaces.  
Zinc-plated exposed surfaces.  
Buna N O-rings and polyester  
elastomer back-ups standard.

**Standard Ported Body:** Weight:  
0.16 kg. (0.35 lbs.); Anodized high-  
strength 6061 T6 aluminum alloy,  
rated to 240 bar (3500 psi). Ductile  
iron bodies available; dimensions  
may differ. See page 8.010.1

## TO ORDER

<b>CV10-24 - - -</b>		
	<b>Porting</b>	
Cartridge Only	<b>0</b>	
SAE 6	<b>6T</b>	
SAE 8	<b>8T</b>	
1/4 in. BSP*	<b>2B</b>	
3/8 in. BSP*	<b>3B</b>	
1/2 in. BSP*	<b>4B</b>	
		<b>Bias Spring</b>
		<b>05</b> 0.34 bar (5 psi)
		<b>25</b> 1.7 bar (25 psi)
		<b>55</b> 3.8 bar (55 psi)
		<b>Seals</b>
		<b>N</b> Buna N (Std.)
		<b>V</b> Viton