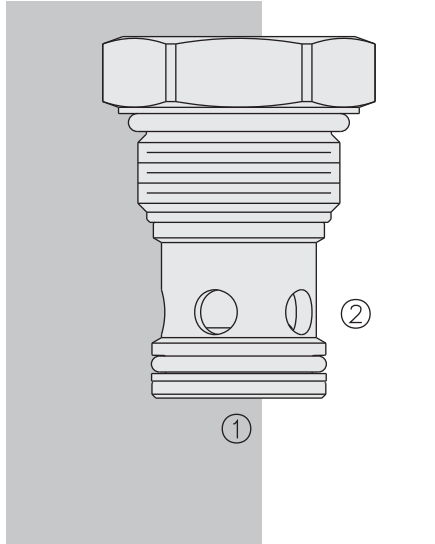


HCV16-20 HyPerformance™ Check Valve



DESCRIPTION

A screw-in, cartridge-style, hydraulic check valve for use as a blocking or load-holding device in high pressure applications.

OPERATION

The HCV16-20 allows flow from 1 to 2, while normally blocking flow in the opposite direction.

The cartridge has a fully guided poppet which is spring-biased to closed until sufficient pressure is applied at 1 to open to 2.

FEATURES

- Hardened seat for long life and low leakage.
- Optional bias springs for back-pressure application flexibility.
- All HyPerformance products are tested to the rigorous standards of the NFPA specification T2.6.1.
- All HyPerformance valves are tested at a verification level of 90% and an assurance of 99%.

RATINGS

Operating Pressure: 350 bar (5075 psi); 10% cycle life: 420 bar (6090 psi)

Note: All HyPerformance products are tested for 900K cycles at 350 bar and 100K at 420 bar.

Fatigue Rating: 2 million cycles at 420 bar

Burst Pressure: 1380 bar (20000 psi)

Flow: Up to 151 lpm (40 gpm)

Max. Internal Leakage: 0.25 cc/minute (5 drops/minute) at 350 bar (5075 psi)

Operating Temperature: -54 to 107°C (-65 to 225°F) with Urethane seals

Filtration: See page 9.010.1

Fluids: Mineral-based or synthetics with lubricating properties at viscosities of 7.4 to 420 cSt (50 to 2000 sus); See Temperature and Oil Viscosity, page 9.060.1

Installation: No restrictions; See page 9.020.1

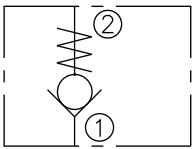
Cavity: HVC16-2; See page 9.116.1

Cavity Tool: HCT16-2XX; See page 8.600.1

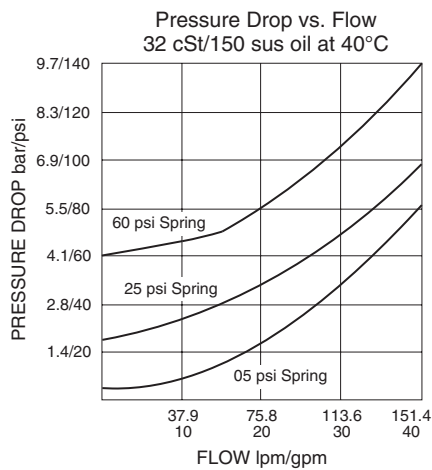
Seal Kit: SK16-2X-X; See page 8.650.1

SYMBOLS

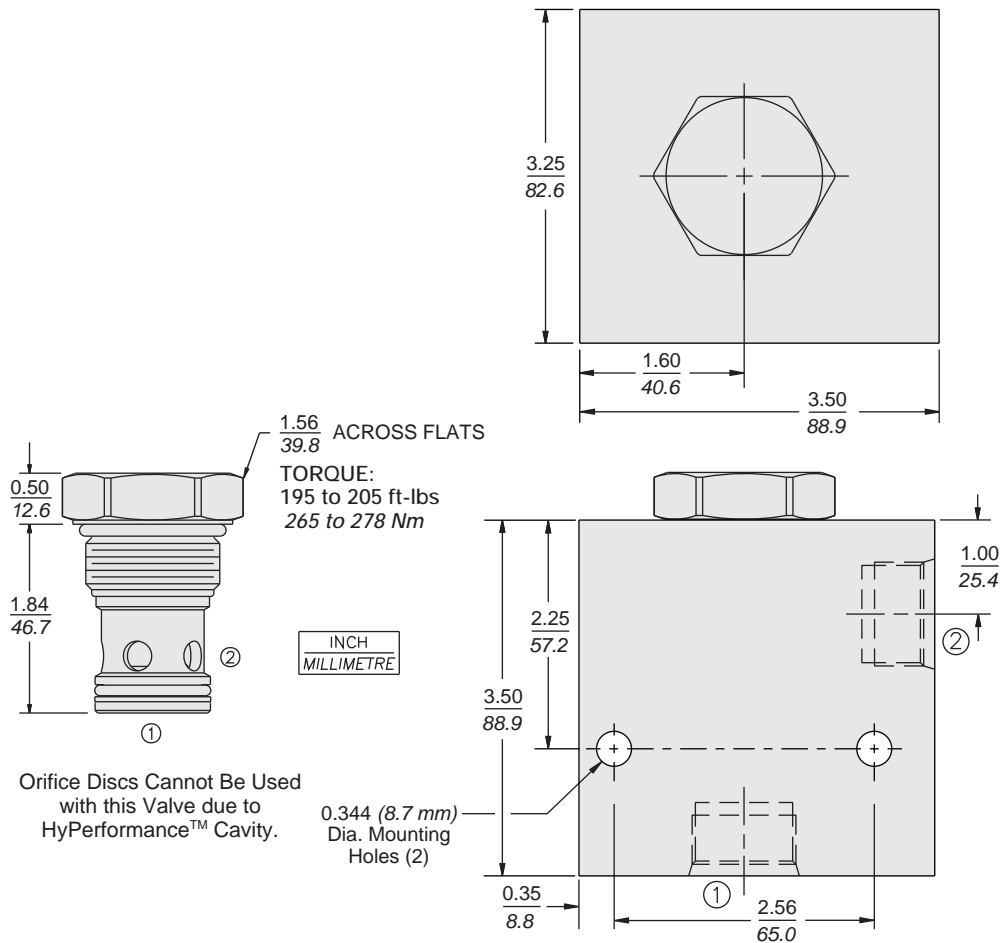
USASI/ISO:



PERFORMANCE (Cartridge Only)



DIMENSIONS



MATERIALS

Cartridge: Weight: 0.32 kg. (0.70 lbs.)
Steel with hardened work surfaces.
Zinc-nickel plated exposed surfaces.
PPDI Urethane seals and no
back-up rings standard.

Ported Body: Weight: 3.97 kg.
(8.75 lbs.); HyPerformance™
Ductile iron (code 'D') standard.
Rated to 345 bar (5000 psi).

TO ORDER

HCV16-20 - - -

<p>Porting Cartridge Only 0 SAE 16 16TD 1 in. BSP* 8BD *BSP Body; U.K. Mfr. Only</p>	<p>Bias Spring Value 05 0.35 bar (5 psi) 08 0.6 bar (8 psi) 15 1.0 bar (15 psi) 25 1.7 bar (25 psi) 60 4.1 bar (60 psi)</p>
--	---

Seals
U PPDI Urethane

Note: PPDI Urethane seals are recommended
for pressures over 241 bar (3500 psi).