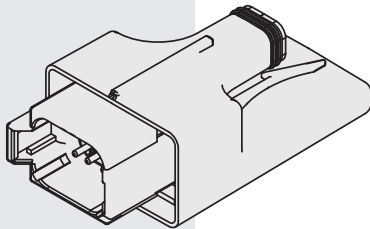


EVDR-0201 Dual/Single Valve Driver, Plug-In Style

European
Commission
(EC)



DIAGNOSTIC FEATURES

Any input below 9 VDC or above 36 VDC for a duration of 100 mS will cause the controller to default to the valve-off mode.

The driver output will drop and hold at the inactive stand-by condition. Any short or open circuit condition will thus be automatically detected as an error.

When the fault is corrected, the controller will return to standard operation.

DESCRIPTION

A CE-qualified, compact plug-in style, microprocessor based, valve driver designed for use in hydraulic proportional valve applications. Configurable to drive either one or two coils using SAE J1939 CAN input or an independent voltage, current, or resistance signal. The EVDR-0201 is designed to proportionally control one or two coils to a user-defined metering profile. The profile can provide either a straight-line or dual sloped output which is user configurable. An easy to use, web-accessible configuration tool is available as a free download at www.hydraforce.com/electronics

OPERATION

The controller will accept inputs from commonly available analog or J1939 CAN operator interface devices (joystick, potentiometer, sensors, master controller, etc.). The input signal drives the output current to the user defined ramp rate, enabling accurate and proportional metering control of the hydraulic valve. As the input changes, the output follows the defined metering profile allowing optimum system response. The unit can be configured for direct valve operation. Built-in diagnostics detect short to ground, over current or over voltage conditions which automatically deactivates the outputs.

RATINGS

Operating Temperature: -40°C to +85°C (-40° to 185°F)

Molded Enclosure Dimensions: 46.7 mm (W) x 87.8 mm (H) x 34.0 mm (D);
1.84 in. (W) x 3.46 in. (H) x 1.34 in. (D)

Mating Connectors: Deutsch DT06-8SA and DT04-2P

Power Requirements: 9 to 36 VDC

Control Inputs:

Voltage: 0 to 5 or 0 to 10 VDC

Current: 0 to 20 or 4 to 20 mA

Resistive: 0 to 5K ohms

CAN: J1939

Control Outputs: 50 to 2000 mA

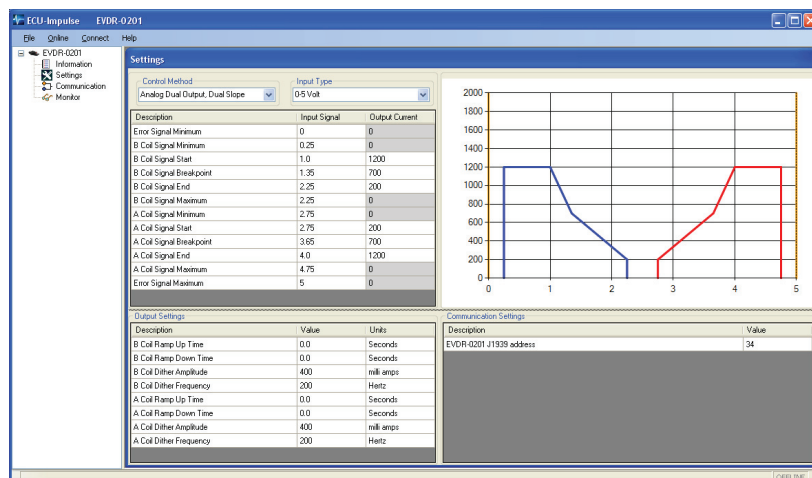
Dither: 40 to 400 Hz; 0-2000 mA

Ramp Time: 0.0 to 25.5 seconds; Signal-Min to Signal-Max

Sealing: IP69K rated

Weight: 0.079 kg/0.175 lb without connectors

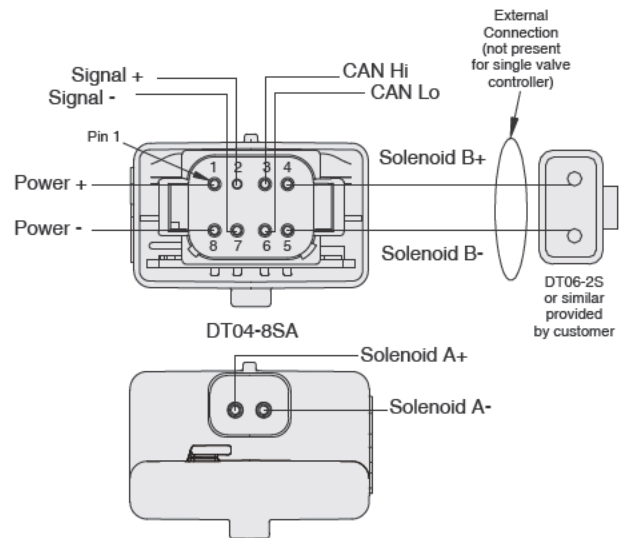
CONFIGURATION EXAMPLE



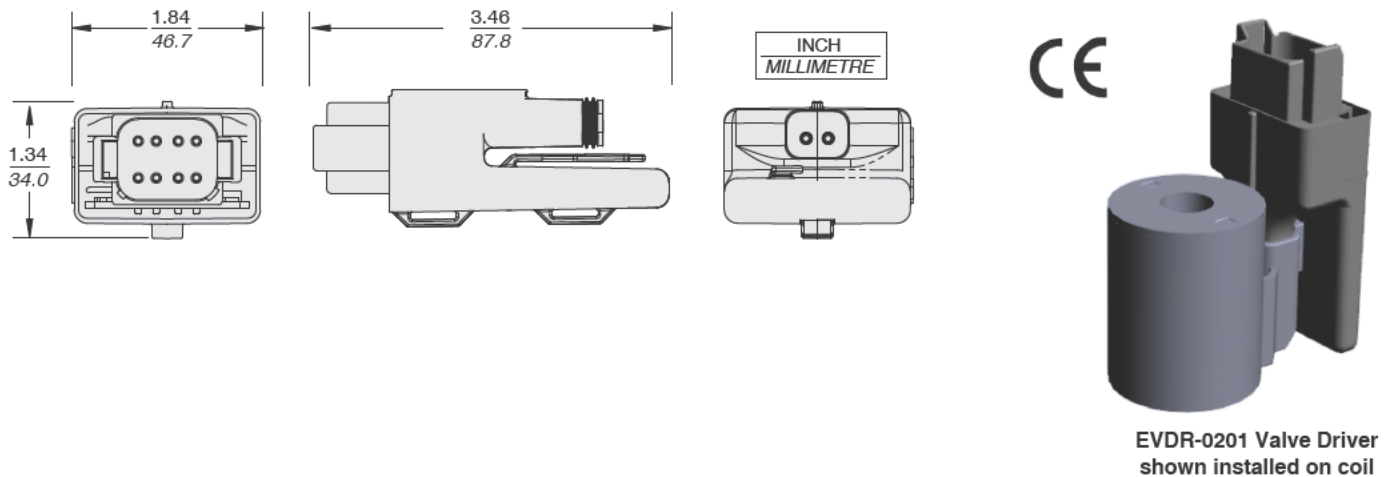
EVDR-0201 Dual/Single Valve Driver, Plug-In Style

CONNECTIONS & WIRING

Description	Interface	Pin	Connector
Battery	Power + Power -	1 8	DT04-8PA
Voltage/Current/ Resistance/ Control Signal	Signal in Gnd	2 7	
CAN/J1939 Communication	CAN_HI CAN_LO	3 6	
External Solenoid	Sol B + Sol B -	4 5	
Integral Solenoid	Sol A + Sol A -	1 2	DT06-2S



DIMENSIONS & MOUNTING



TO ORDER

Dual/Single Valve Driver Model EVDR-0201 — Part No. 4209160

EVDR-0201 Configuration Software - Free download from www.hydraforce.com/electronics

USB-CAN Adaptor: Part No. 4000374; Kvaser Leaf Light (Part No. 4000371) www.kvaser.com; Peak PCAN-USB www.peak-system.com; Lawicel CAN/USB www.canusb.com