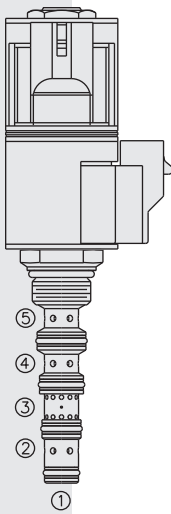
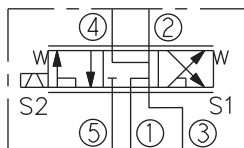
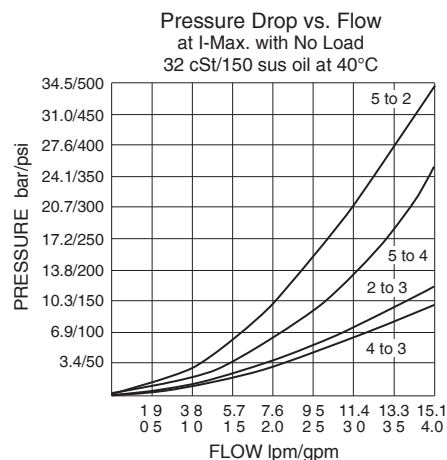
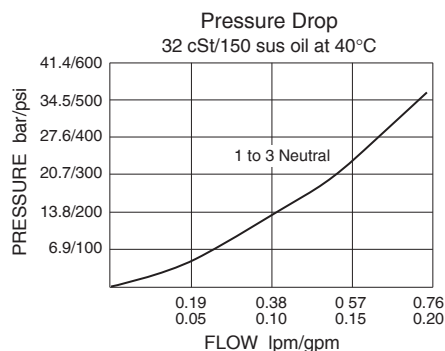


SP08-58D Spool, 5-Way, 3-Position . . .**SYMBOL****PERFORMANCE** (Cartridge Only)**DESCRIPTION**

A solenoid-operated, 5-way, 3-position, proportional, screw-in, motor-spool-type hydraulic cartridge valve with integral load sense port.

OPERATION

When de-energized, the **SP08-58D** allows flow between 4, 3, 2, and 1. When coil #1 is energized, flow is allowed from 5 to 2, and from 4 to 3. When coil #2 is energized, flow is allowed from 5 to 4, and from 2 to 3. Load sense is connected to port 5 when the spool is in shifted positions.

Note: If low voltage is expected on the machine, 12 or 24 volt systems will require the use of 10 volt or 20 volt coils respectively. See "SP Valves and Coil Operating Parameters," page 2.002.1.

FEATURES

- Continuous-duty rated solenoid.
- Hardened precision spool and cage for long life.
- Optional coil voltages and terminations.
- Optional waterproof E-Coils rated up to IP69K.
- Compact size; Manual override options.
- Efficient wet-armature construction.
- Cartridges are voltage interchangeable.
- Unitized, molded coil design.

RATINGS

Operating Pressure: 241 bar (3500 psi)

Proof Pressure: 345 bar (5000 psi)

Flow: 15.1 lpm (4.0 gpm) maximum; see performance charts

Internal Leakage: 246 cc/minute (15 cu. in./minute) max. at 207 bar (3000 psi)

Temperature: -40 to 120°C with standard Buna seals

Coil Duty Rating: Continuous from 85% to 115% of nominal voltage

Initial Coil Current Draw at 20° C: Standard Coil: 1.2 amps at 12 VDC;
0.13 amps at 115 VAC (full wave rectified).

E-Coil: 1.4 amps at 12 VDC; 0.7 amps at 24 VDC

Minimum Pull-in Voltage: 85% of nominal at 207 bar (3000 psi)

Filtration: See page 9.010.1

Fluids: Mineral-based or synthetics with lubricating properties at viscosities of 7.4 to 420 cSt (50 to 2000 sus); See Temperature and Oil Viscosity, page 9.060.1

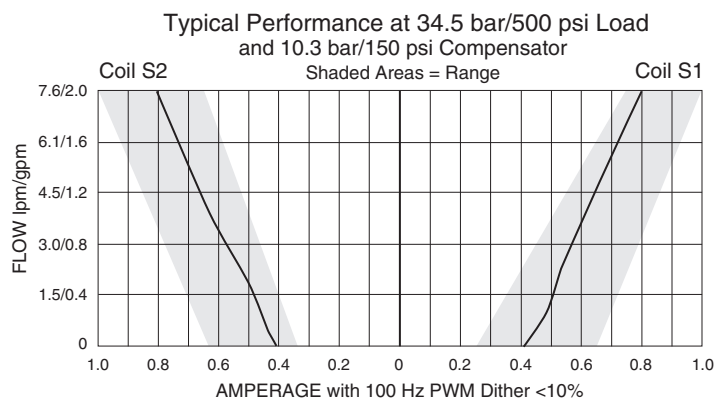
Installation: No restrictions; See page 9.020.1

Cavity: VC08-5; See page 9.108.1; **Cavity Tool:** CT08-5XX; See page 8.600.1

Seal Kit: SK08-5X-MMM; See page 8.650.1

Coil Nut: Part No. 7004400

Coil Spacer: Std D-Coil Spacer Part No. 7012940; E-Coil Spacer Part No. 4534720;
If cartridge is ordered "Less Coil," D-Coil spacer will be provided unless an E is specified in the Coil Termination To Order section.

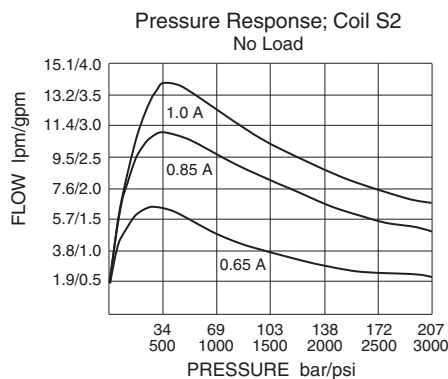
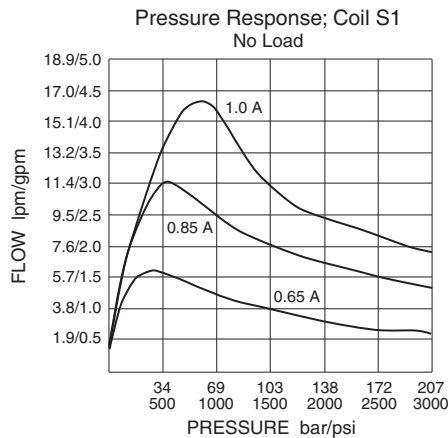


Performance info. continued on following page.

for Load Sensing Applications

SP08-58D

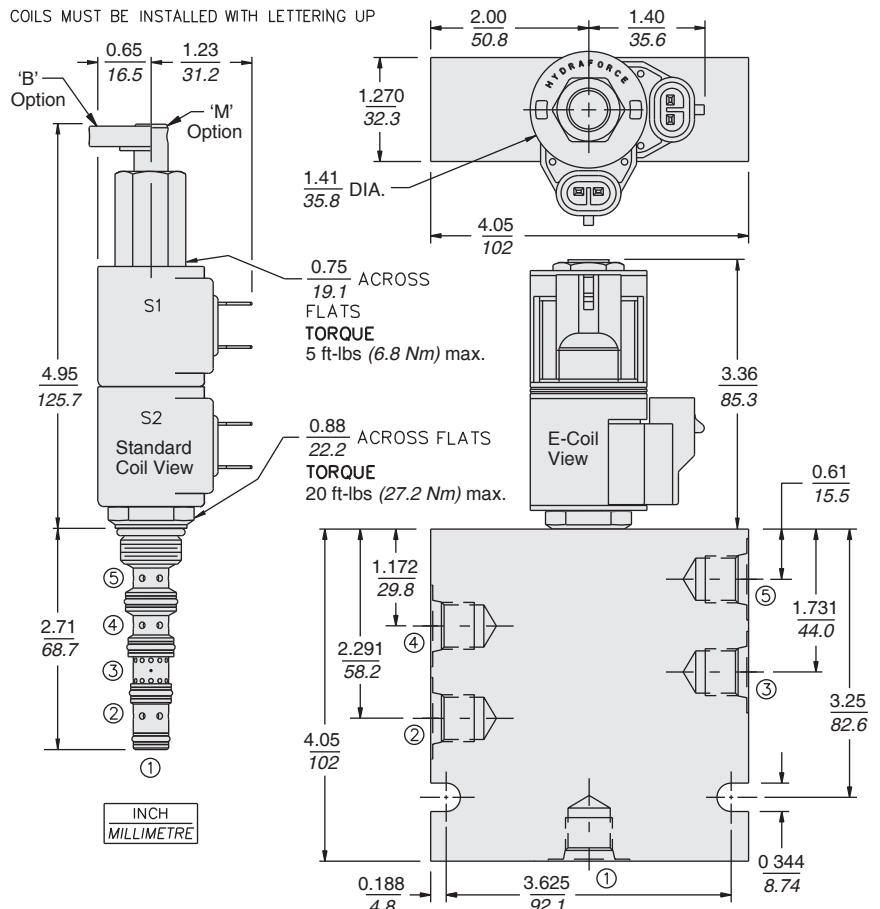
PERFORMANCE (Continued)



Recommended Electronic Controllers:
See page 2.001.1 or our Electronics catalog.

DIMENSIONS

COILS MUST BE INSTALLED WITH LETTERING UP



MATERIALS

Cartridge: Weight: 0.15 kg. (0.34 lbs.); Steel with hardened work surfaces. Zinc-plated exposed surfaces; Buna N O-rings and back-ups standard.

Standard Ported Body:
Weight: 0.41 kg. (0.85 lbs.); Anodized high-strength 6061 T6 aluminum alloy, rated to 207 bar (3000 psi); Ductile iron bodies available; dimensions may differ. See page 8.008.1.

Standard Coil: Weight each: 0.11 kg. (0.25 lbs.); Unitized thermoplastic encapsulated, Class H high temperature magnetwire. See page 3.200.1

E-Coil: Weight: 0.14 kg. (0.3 lbs.); Perfect wound, fully encapsulated with rugged external metal shell; Rated up to IP69K with integral connectors. See page 3.400.1

TO ORDER

SP08-58D

Option		Voltage		Coil Termination		E-Coil		D-Coil	
None (Blank)		Std. Coil		Less Coil "E" Spacer		E		—	
Manual Override B		00 Less Coil**		Deutsch DT04-2P		ER (IP69K)		DR (IP65)	
Manual Override M		10 10 VDC†		Metri-Pack® 150		EY (IP69K)		DY (IP65)	
For Manual Override options see page 1.001.1		12 12 VDC		Dual Lead Wires		EL (IP69K)		DL (IP65)	
Flow varies with manual override options; consult factory for details.		24 24 VDC		Amp Jr. Timer		EJ (IP67)		—	
		36 36 VDC		DIN 43650		EG (IP65)		DG (IP65)	
		48 48 VDC		Dual Spades		—		DS (IP65)	
		24 24 VAC							
		115 115 VAC							
		230 230 VAC							
		**Includes D-Coil Nut and Spacer.							
		† DS, DW or DL terminations only.							
Porting		E-Coil							
Cartridge Only 0		10 10 VDC							
SAE 4 4T		12 12 VDC							
SAE 6 6T		20 20 VDC							
		24 24 VDC							
Seals									
Buna N (Std.) N									
Fluorocarbon V									
Polyurethane P									

For Coils with Zener Diode, add **"IZ"** to option code.
For example: **"ER/IZ"**. Not available on all models.
See coil option info. on pages 3.200.1 & 3.400.1

For Coils with Zener Diode, add "Z" to option code. For example: "ER/Z". Not available on all models. See coil option info. on pages 3.200.1 & 3.400.1