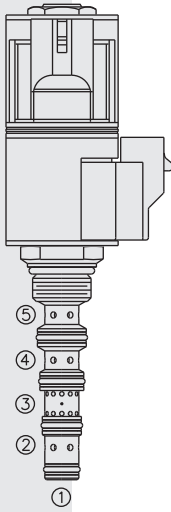


# SP08-57D Spool, 5-Way, 3-Position . . .



## DESCRIPTION

A solenoid-operated, five-way, three-position, proportional, screw-in hydraulic cartridge valve with integral load-sense port.

## OPERATION

When de-energized, the **SP08-57D** blocks flow at 5 while allowing flow from both 2 and 4 to 3. When coil #1 is energized, flow is allowed from 5 to 2, and from 4 to 3. When coil #2 is energized, flow is allowed from 5 to 4, and from 2 to 3. Load sense is connected to port 5 when the spool is in shifted positions.

**Note: If low voltage is expected on the machine, 12 or 24 volt systems will require the use of 10 volt or 20 volt coils respectively. See "SP Valves and Coil Operating Parameters," page 2.002.1.**

## FEATURES

- Continuous-duty rated solenoid.
- Hardened precision spool and cage for long life.
- Optional coil voltages and terminations
- Cartridges are voltage interchangeable.
- Compact size; Manual override options.
- Optional waterproof E-Coils rated up to IP69K.

## RATINGS

**Operating Pressure:** 241 bar (3500 psi) with standard Buna N seals

**Flow:** 9.5 lpm (2.5 gpm); see performance charts

**Internal Leakage:** 164 cc/minute (10 cu. in./minute) max. at 207 bar (3000 psi)

**Temperature:** -40 to 120°C with standard Buna seals

**Coil Duty Rating:** Continuous from 85% to 115% of nominal voltage

**Initial Coil Current Draw at 20° C:** Standard Coil: 1.2 amps at 12 VDC; 0.13 amps at 115 VAC (full wave rectified).

E-Coil: 1.4 amps at 12 VDC; 0.7 amps at 24 VDC

**Minimum Pull-in Voltage:** 85% of nominal at 207 bar (3000 psi)

**Filtration:** See page 9.010.1

**Fluids:** Mineral-based or synthetics with lubricating properties at viscosities of 7.4 to 420 cSt (50 to 2000 sus); See Temperature and Oil Viscosity, page 9.060.1

**Installation:** No restrictions; See page 9.020.1

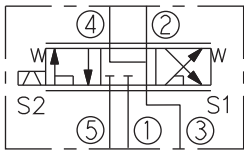
**Cavity:** VC08-5; See page 9.108.1; **Cavity Tool:** CT08-5XX; See page 8.600.1

**Seal Kit:** SK08-5X-MMM; See page 8.650.1

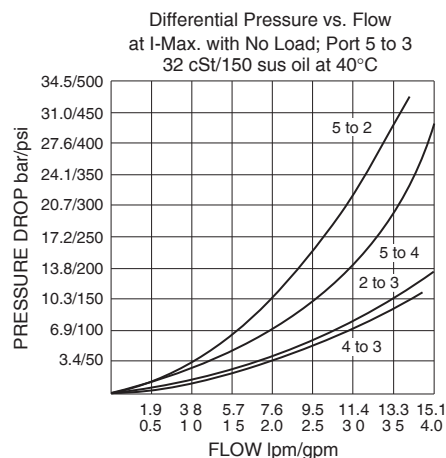
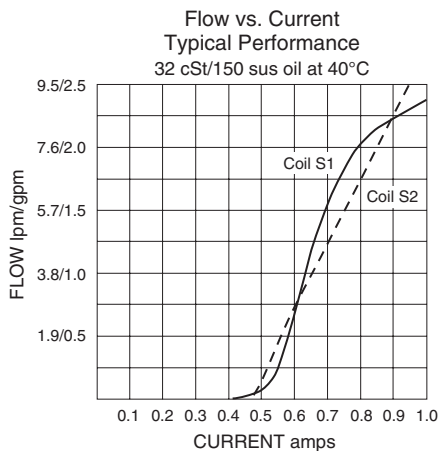
**Coil Nut:** Part No. 7004400

**Coil Spacer:** Std D-Coil Spacer Part No. 7012940; E-Coil Spacer Part No. 4534720; If cartridge is ordered "Less Coil," D-Coil spacer will be provided unless an E is specified in the Coil Termination To Order section.

## SYMBOL



## PERFORMANCE (Cartridge Only)

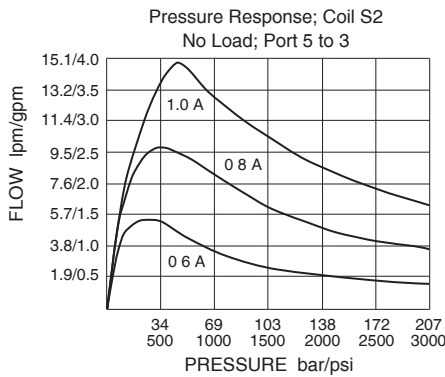
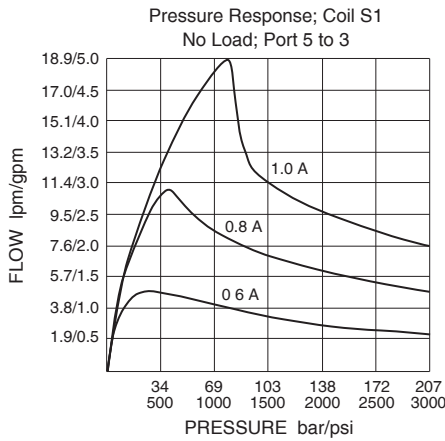


Performance information continued on following page.

# for Load Sense Applications

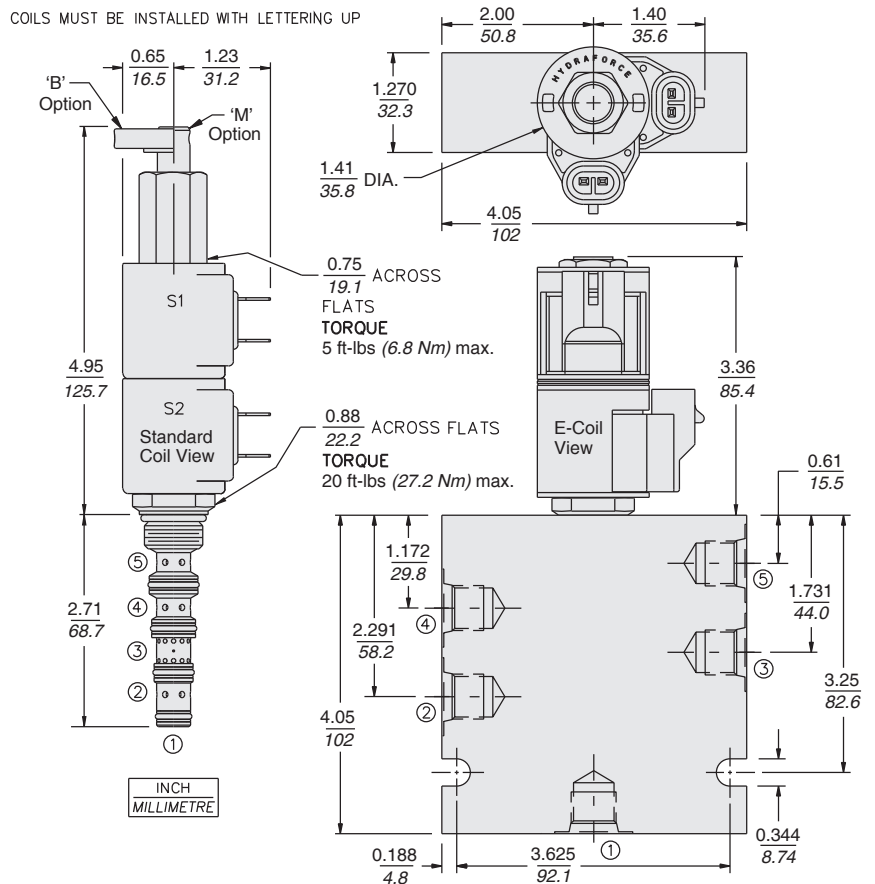
# SP08-57D

## PERFORMANCE (Continued)



**Recommended Electronic Controllers:**  
See page 2.001.1 or our Electronics catalog.

## DIMENSIONS



## MATERIALS

**Cartridge:** Weight: 0.15 kg. (0.34 lbs.); Steel with hardened work surfaces. Zinc-plated exposed surfaces; Buna N O-rings and back-ups standard.

**Standard Ported Body:** Weight: 0.41 kg. (0.85 lbs.); Anodized high-strength 6061 T6 aluminum alloy, rated to 207 bar (3000 psi); Ductile iron bodies available; dimensions may differ. See page 8.008.1.

**Standard Coil:** Weight each: 0.11 kg. (0.25 lbs.); Unitized thermoplastic encapsulated, Class H high temperature magnet wire. See page 3.200.1

**E-Coil:** Weight: 0.14 kg. (0.3 lbs.); Perfect wound, fully encapsulated with rugged external metal shell; Rated up to IP69K with integral connectors. See page 3.400.1

## TO ORDER

### SP08-57D

**Option**  
 None (Blank)  
 Manual Override **B**  
 Manual Override **M**  
 For Manual Override options see page 1.001.1

Flow varies with manual override options; consult factory for details.

**Porting**  
 Cartridge Only **0**  
 SAE 4 **4T**  
 SAE 6 **6T**

**Seals**  
 Buna N (Std.) **N**  
 Fluorocarbon **V**  
 Polyurethane **P**

**Voltage Std. Coil**  
**0** Less Coil\*\*  
**10** 10 VDC†  
**12** 12 VDC  
**20** 20 VDC  
**24** 24 VDC

\*\*Includes D-Coil Nut and Spacer.  
 † DS, DW or DL terminations only.

**E-Coil**  
**10** 10 VDC  
**12** 12 VDC  
**20** 20 VDC  
**24** 24 VDC

Coil Termination	E-Coil	D-Coil
Less Coil "E" Spacer	<b>E</b>	—
Deutsch DT04-2P	<b>ER</b> (IP69K)	<b>DR</b> (IP65)
Metri-Pack® 150	<b>EY</b> (IP69K)	<b>DY</b> (IP65)
Dual Lead Wires	<b>EL</b> (IP69K)	<b>DL</b> (IP65)
Amp Jr. Timer	<b>EJ</b> (IP67)	—
DIN 43650	<b>EG</b> (IP65)	<b>DG</b> (IP65)
Dual Spades	—	<b>DS</b> (IP65)

For Coils with Zener Diode, add "Z" to option code. For example: "ERZ". Not available on all models. See coil option info. on pages 3.200.1 & 3.400.1