

Product Guide Dock Leveller



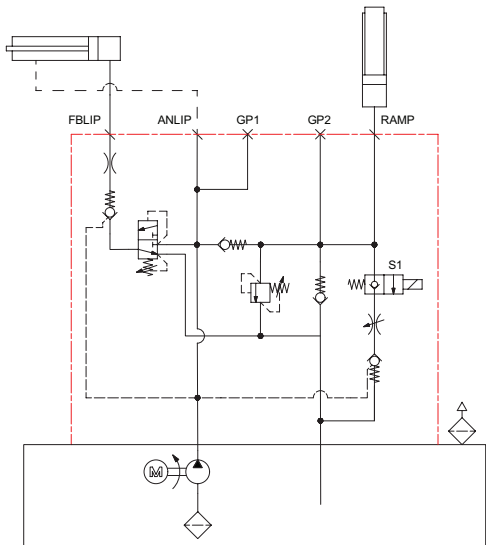
savery.co.uk

Savery Hydraulics is a leading expert in the design and manufacture of hydraulic solutions.

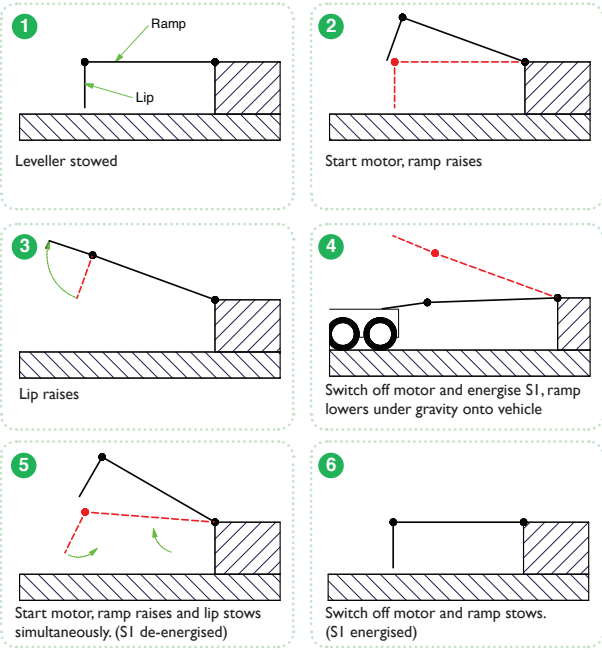
Our Dock Leveller Power Pack has been designed with ease of integration in mind and variants will work on both folding and sliding lip Dock Levellers. They are based around a common single centre adaptor design.

Folding Lip (DLFL)

CIRCUIT DIAGRAM

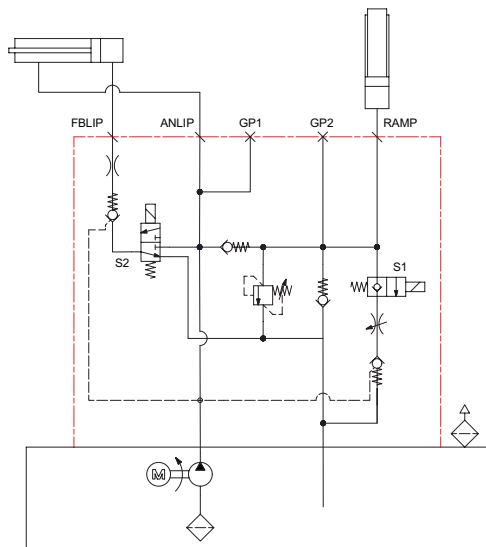


SEQUENCE OF OPERATION

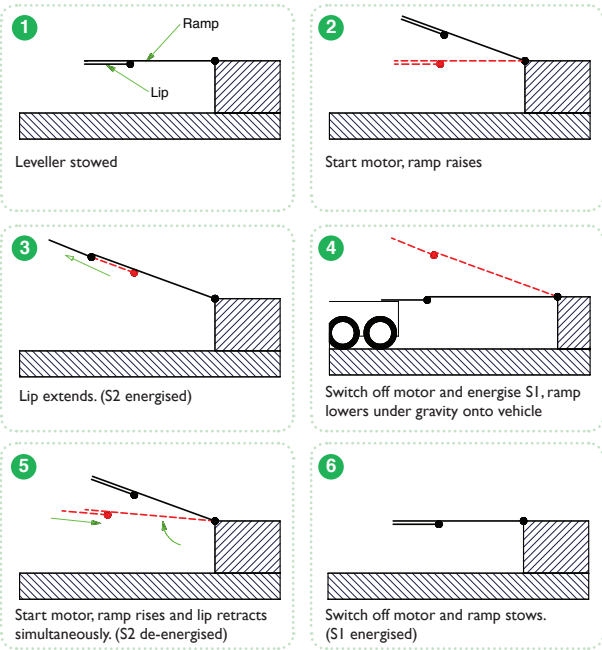


Sliding Lip (DLSL)

CIRCUIT DIAGRAM



SEQUENCE OF OPERATION



Specification



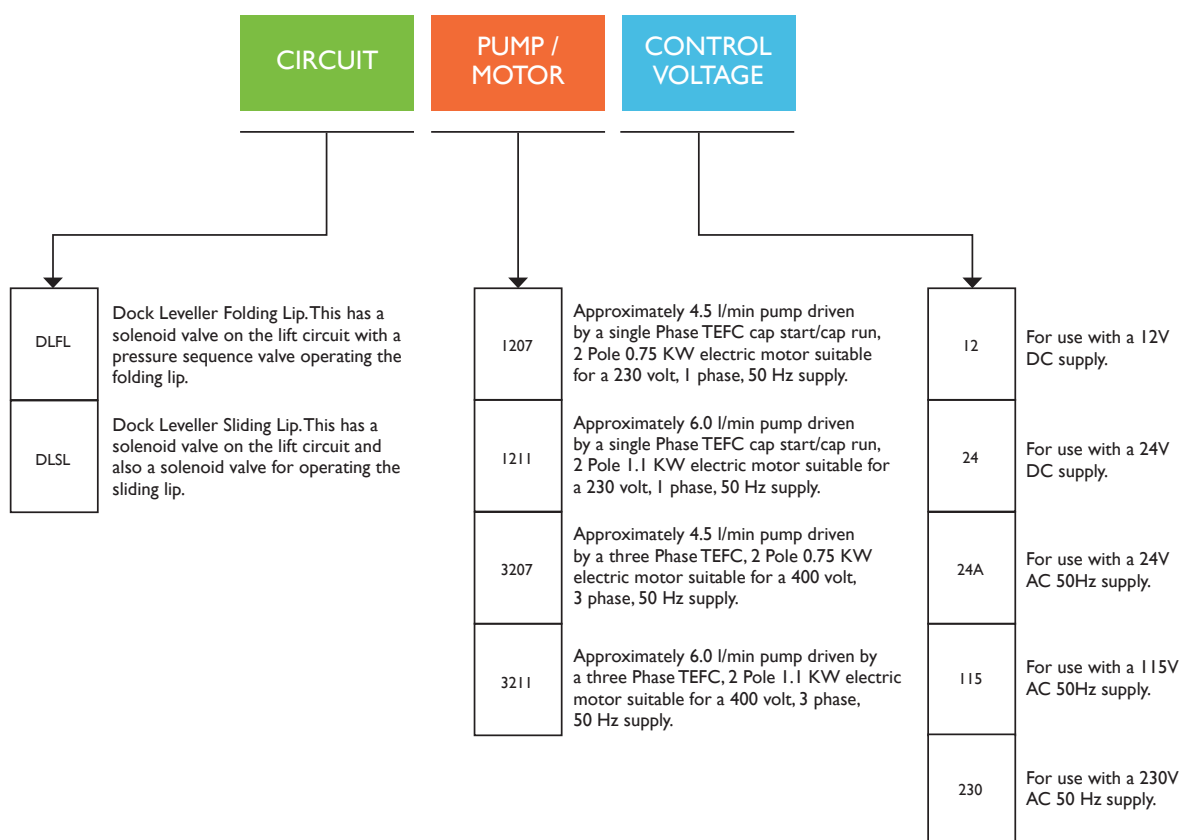
- 0.75kW & 1.1kW 2 pole, single and 3 phase AC motor options available.
- Standard relief setting 165 bar.
- A range of AC and DC control voltages available.
- Standard reservoir with 5.0 litres useable volume.
- Suitable for both single and double acting lip cylinders.
- Incorporates overload relief valve and an anti cavitation check valve.

Special variants available on request (contact our sales team).

Order Code



Using the breakdown of the ordering code below a Dock Leveller power pack can easily be configured to suit your requirements. Simply work along each section choosing the configuration that you require.



EXAMPLE 1

DLFL-3207-24

This would be a Dock Leveller power pack fitted with a pressure sequence valve for operating a folding lip Dock Leveller. It would be fitted with a 0.75kw, 2 pole totally enclosed, fan cooled electric motor suitable for operating off a 400 volt, 3 phase, 50Hz supply. It would include a pump unit delivering 4.5 l/min at 165 bar and be fitted with a solenoid coil suitable for operation from a 24VDC supply.

EXAMPLE 2

DLSL-1211-115

This would be a Dock Leveller power pack fitted with a solenoid valve for operating a sliding lip Dock Leveller. It would be fitted with a 1.1kw, 2 pole totally enclosed, fan cooled electric motor suitable for operating off a 230 volt, 1 phase, 50Hz supply. It would include a pump unit delivering 6.0 l/min at 165 bar and be fitted with a solenoid coil suitable for operation from a 115VAC 50 Hz supply.

For basic dimensions of the dock levellers please see the back page.

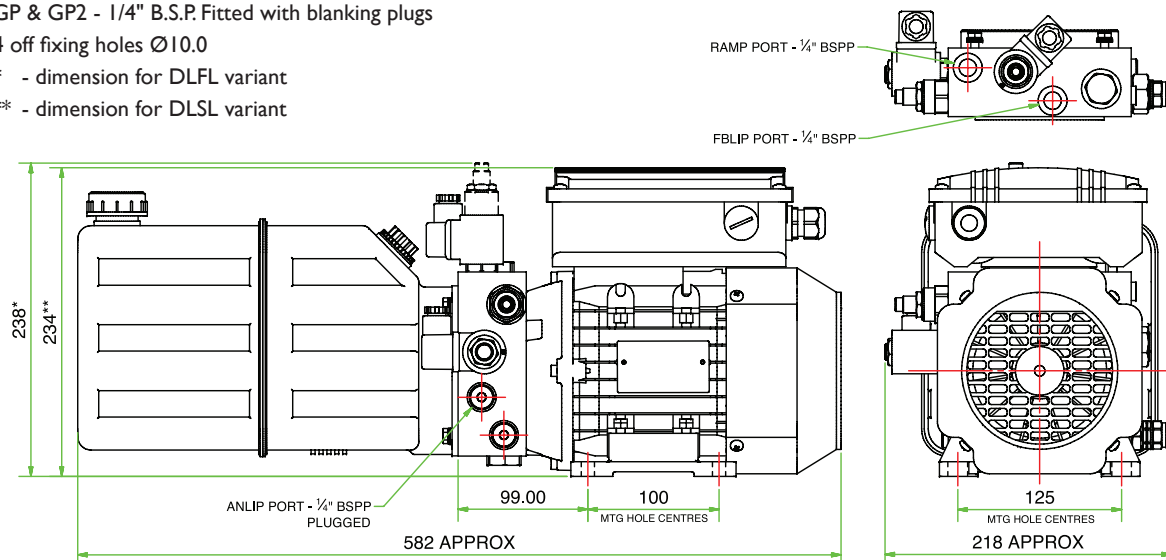
Single Phase Dimensions (Motors 1207 & 1211)

GP & GP2 - 1/4" B.S.P. Fitted with blanking plugs

4 off fixing holes Ø10.0

* - dimension for DLFL variant

** - dimension for DLSL variant



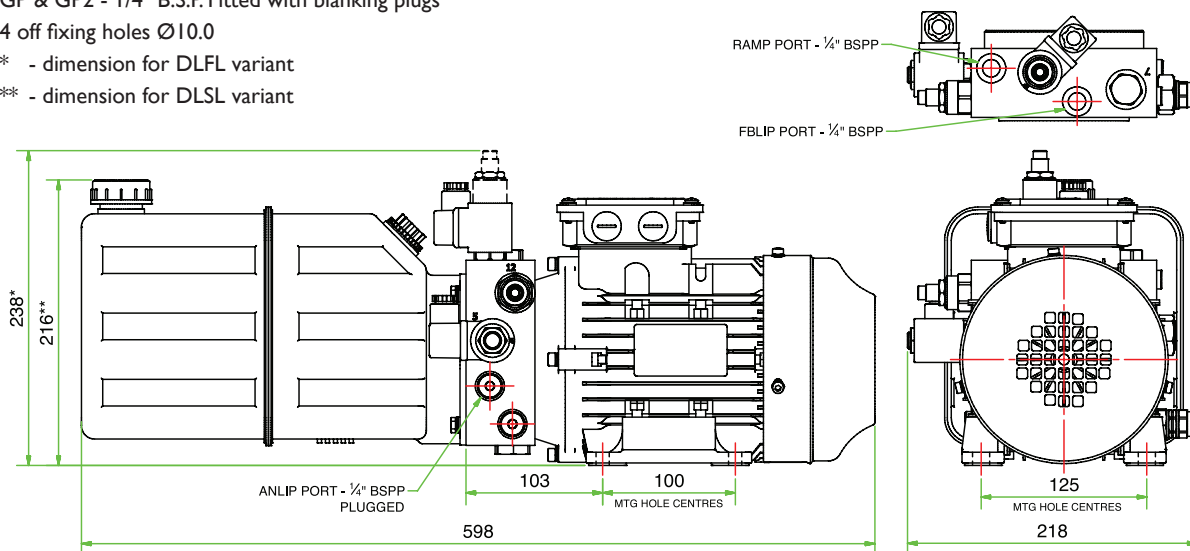
Three Phase Dimensions (Motors 3207 & 3211)

GP & GP2 - 1/4" B.S.P. Fitted with blanking plugs

4 off fixing holes Ø10.0

* - dimension for DLFL variant

** - dimension for DLSL variant



SDL Issue 1 June 2016

T A Savery & Co Limited
Grovelands, Longford Road
Exhall, Coventry
CV7 9NE

T. +44 (0)24 7664 5555

F. +44 (0)24 7636 6879

E. sales@savery.co.uk

savery.co.uk

