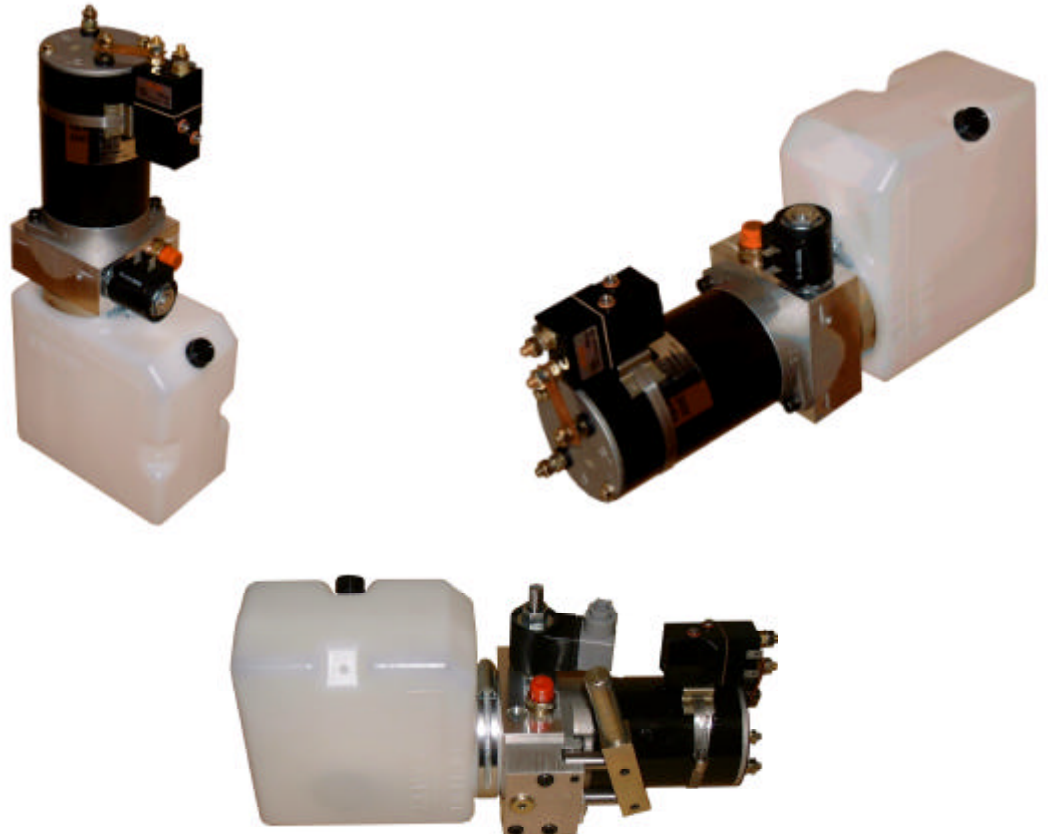


# SAVERY



## The SAVERY Mini-Pak Range

Of Miniature Hydraulic Power Units

12 & 24 Volt, 500 & 800 Watt DC Motors  
Horizontal Or Vertical Mounting  
Single or Double Acting Control  
Custom Circuit Designs Manifolded Direct to Unit  
1 Litre – 4 Litre Plastic Reservoirs  
Hand Pump Option  
Wide Range of Efficient Pressure Balanced Pumps  
Pressures Up to 250 Bar  
Complements our Existing Successful Range of  
PB300 Hydraulic power Units.



**T.A. Savery & Co. Ltd, Bracebridge Street Birmingham B6 4PF.**  
Contact: Sales Department Direct Line Tel - 0121 380 4514, Fax 0121 380 4522  
Email us on: [sales@savery.co.uk](mailto:sales@savery.co.uk) - Or Visit Our Website [www.savery.co.uk](http://www.savery.co.uk)

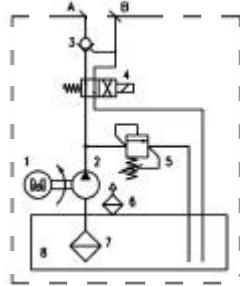
# Features

The Mini-Pak range of power units uses a purpose designed Centre Adapter Manifold, incorporating a relief valve, double or single acting directional control valve and a pressure port check valve, whilst also providing the interface for connection of a pressure balanced gear pump and the electric motor.

Options include a bolt on Hand Pump, Pressure Compensated Flow Control, Thermal Trip and the facility to close couple custom-built manifolds to the Centre Adapter.

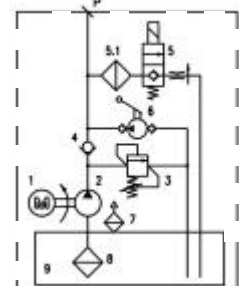
Due to the innovative design of the plastic tanks, units can be built as vertical or horizontal mount versions, allowing flexibility of mounting arrangements and convenient filling. Mounting arrangements should be determined prior to ordering, to ensure correct positioning of the suction filter within the tank.

If your specific requirements are not catered for by the options detailed in this leaflet, please call us. As a British manufacturer of power units for over 30 years, we have the design facilities and production capabilities to satisfy most requests.



Double Acting Circuit with Optional P.O. Check Valve

## Typical Hydraulic Circuits



Single acting Circuit With Hand Pump

## Mini-Pak Ordering Code

**MP2K DC**    **12**    **075**    **A**    **12**    **B**    **2 / H**    **3**    **C**    **B**    **150**    **H**    **M\*\*\***

MOTOR		PUMP		CONTROL COILS		TANK		FLOW CONTROLS		RELIEF VALVE TYPE		SUCTION STRAINER ORIENTATION		ASSEMBLY ORIENTATION		RELIEF VALVE SETTING		UNIT MOUNTING																																																																																																																																																				
<table border="1" style="width: 100%; border-collapse: collapse;"> <tr><th>DESCRIPTION</th><th>CODE</th></tr> <tr><td>NO MOTOR</td><td>00</td></tr> <tr><td>12V DT 500W LOW POWER</td><td>12</td></tr> <tr><td>12V DT 800W HIGH POWER</td><td>13</td></tr> <tr><td>24V DT 500W LOW POWER</td><td>24</td></tr> <tr><td>24V DT 800W HIGH POWER</td><td>25</td></tr> <tr><td>SPECIAL MOTOR</td><td>XX</td></tr> </table>		DESCRIPTION	CODE	NO MOTOR	00	12V DT 500W LOW POWER	12	12V DT 800W HIGH POWER	13	24V DT 500W LOW POWER	24	24V DT 800W HIGH POWER	25	SPECIAL MOTOR	XX	<table border="1" style="width: 100%; border-collapse: collapse;"> <tr><th>cm<sup>3</sup>/REV</th><th>CODE</th></tr> <tr><td>0.16</td><td>016</td></tr> <tr><td>0.24</td><td>024</td></tr> <tr><td>0.45</td><td>045</td></tr> <tr><td>0.56</td><td>056</td></tr> <tr><td>0.75</td><td>075</td></tr> <tr><td>0.92</td><td>092</td></tr> <tr><td>1.25</td><td>125</td></tr> <tr><td>1.48</td><td>148</td></tr> <tr><td>2.28</td><td>228</td></tr> <tr><td>X</td><td>SPECIAL</td></tr> </table>		cm <sup>3</sup> /REV	CODE	0.16	016	0.24	024	0.45	045	0.56	056	0.75	075	0.92	092	1.25	125	1.48	148	2.28	228	X	SPECIAL	<table border="1" style="width: 100%; border-collapse: collapse;"> <tr><th>CODE</th><th>L/MIN</th></tr> <tr><td>0</td><td>NONE</td></tr> <tr><td>1</td><td>1</td></tr> <tr><td>2</td><td>2</td></tr> <tr><td>3</td><td>3</td></tr> <tr><td>4</td><td>4</td></tr> <tr><td>X</td><td>SPECIAL</td></tr> </table>		CODE	L/MIN	0	NONE	1	1	2	2	3	3	4	4	X	SPECIAL	<table border="1" style="width: 100%; border-collapse: collapse;"> <tr><th>CODE</th><th>SUCTION ORIENTATION</th></tr> <tr><td>0</td><td>VERTICAL</td></tr> <tr><td>A</td><td>12 O'CLOCK</td></tr> <tr><td>B</td><td>3 O'CLOCK</td></tr> <tr><td>C</td><td>6 O'CLOCK</td></tr> <tr><td>D</td><td>9 O'CLOCK</td></tr> </table>		CODE	SUCTION ORIENTATION	0	VERTICAL	A	12 O'CLOCK	B	3 O'CLOCK	C	6 O'CLOCK	D	9 O'CLOCK	<table border="1" style="width: 100%; border-collapse: collapse;"> <tr><th>TYPE</th><th>RANGE (BARS)</th><th>CODE</th></tr> <tr><td>LOW PROFILE HIGH PRESSURE</td><td>100 - 250</td><td>H</td></tr> <tr><td>LOW PROFILE LOW PRESSURE</td><td>10 - 100</td><td>L</td></tr> <tr><td>SPECIAL</td><td></td><td>X</td></tr> </table>		TYPE	RANGE (BARS)	CODE	LOW PROFILE HIGH PRESSURE	100 - 250	H	LOW PROFILE LOW PRESSURE	10 - 100	L	SPECIAL		X	<table border="1" style="width: 100%; border-collapse: collapse;"> <tr><th>CODE</th><th>TYPE</th><th>* CAPACITY</th></tr> <tr><td>0</td><td>NO RESERVOIR</td><td>HORIZONTAL VERTICAL</td></tr> <tr><td>A</td><td>PLASTIC RECTANGULAR</td><td>1.1 1.8</td></tr> <tr><td>B</td><td>PLASTIC RECTANGULAR</td><td>1.7 1.7</td></tr> <tr><td>X</td><td>SPECIAL</td><td></td></tr> </table>		CODE	TYPE	* CAPACITY	0	NO RESERVOIR	HORIZONTAL VERTICAL	A	PLASTIC RECTANGULAR	1.1 1.8	B	PLASTIC RECTANGULAR	1.7 1.7	X	SPECIAL		<table border="1" style="width: 100%; border-collapse: collapse;"> <tr><th>CONTROL</th><th>CODE</th></tr> <tr><td>RETURN PORT ADAPTOR</td><td>A</td></tr> <tr><td>MANUAL RELEASE</td><td>M</td></tr> <tr><td>SOLENOID RELEASE</td><td>S</td></tr> <tr><td>SOLENOID RELEASE WITH DEAD-MAN MANUAL OVER-RIDE</td><td>D</td></tr> <tr><td>SOLENOID RELEASE WITH TWIST MANUAL OVER-RIDE</td><td>T</td></tr> <tr><td>4 WAY SINGLE SOLENOID DCV</td><td>V</td></tr> <tr><td>4 WAY SINGLE SOLENOID DCV, P.O. CHECK ON 'A'</td><td>W</td></tr> <tr><td>HAND PUMP</td><td>H</td></tr> <tr><td>SPECIAL EQUIPMENT</td><td>X</td></tr> </table> <p style="font-size: small;">MANY ALTERNATIVE VALVE OPTIONS ARE AVAILABLE</p>		CONTROL	CODE	RETURN PORT ADAPTOR	A	MANUAL RELEASE	M	SOLENOID RELEASE	S	SOLENOID RELEASE WITH DEAD-MAN MANUAL OVER-RIDE	D	SOLENOID RELEASE WITH TWIST MANUAL OVER-RIDE	T	4 WAY SINGLE SOLENOID DCV	V	4 WAY SINGLE SOLENOID DCV, P.O. CHECK ON 'A'	W	HAND PUMP	H	SPECIAL EQUIPMENT	X	<table border="1" style="width: 100%; border-collapse: collapse;"> <tr><th>COIL VOLTAGE</th><th>CODE</th></tr> <tr><td>NOT APPLICABLE</td><td>0</td></tr> <tr><td>12V. DC (DUAL SPARE)</td><td>12</td></tr> <tr><td>12V. DC (DIN43650 PLUG)</td><td>13</td></tr> <tr><td>24V. DC (DUAL SPARE)</td><td>24</td></tr> <tr><td>24V. DC (DIN43650 PLUG)</td><td>25</td></tr> <tr><td>SPECIAL</td><td>X</td></tr> </table> <p style="font-size: small;">MANY ALTERNATIVE COIL CONNECTORS ARE AVAILABLE</p>		COIL VOLTAGE	CODE	NOT APPLICABLE	0	12V. DC (DUAL SPARE)	12	12V. DC (DIN43650 PLUG)	13	24V. DC (DUAL SPARE)	24	24V. DC (DIN43650 PLUG)	25	SPECIAL	X	<table border="1" style="width: 100%; border-collapse: collapse;"> <tr><th>CODE</th><th>BREATHER ORIENTATION</th></tr> <tr><td>A</td><td>11 O'CLOCK</td></tr> <tr><td>B</td><td>1 O'CLOCK</td></tr> <tr><td>C</td><td>6 O'CLOCK</td></tr> <tr><td>D</td><td>9 O'CLOCK</td></tr> <tr><td>V</td><td>VERTICAL</td></tr> </table>		CODE	BREATHER ORIENTATION	A	11 O'CLOCK	B	1 O'CLOCK	C	6 O'CLOCK	D	9 O'CLOCK	V	VERTICAL	<table border="1" style="width: 100%; border-collapse: collapse;"> <tr><th>CODE</th><th>START SWITCH</th></tr> <tr><td>0</td><td>NOT FITTED</td></tr> <tr><td>1</td><td>12 O'CLOCK</td></tr> <tr><td>2</td><td>3 O'CLOCK</td></tr> <tr><td>3</td><td>6 O'CLOCK</td></tr> <tr><td>4</td><td>9 O'CLOCK</td></tr> </table>		CODE	START SWITCH	0	NOT FITTED	1	12 O'CLOCK	2	3 O'CLOCK	3	6 O'CLOCK	4	9 O'CLOCK
DESCRIPTION	CODE																																																																																																																																																																					
NO MOTOR	00																																																																																																																																																																					
12V DT 500W LOW POWER	12																																																																																																																																																																					
12V DT 800W HIGH POWER	13																																																																																																																																																																					
24V DT 500W LOW POWER	24																																																																																																																																																																					
24V DT 800W HIGH POWER	25																																																																																																																																																																					
SPECIAL MOTOR	XX																																																																																																																																																																					
cm <sup>3</sup> /REV	CODE																																																																																																																																																																					
0.16	016																																																																																																																																																																					
0.24	024																																																																																																																																																																					
0.45	045																																																																																																																																																																					
0.56	056																																																																																																																																																																					
0.75	075																																																																																																																																																																					
0.92	092																																																																																																																																																																					
1.25	125																																																																																																																																																																					
1.48	148																																																																																																																																																																					
2.28	228																																																																																																																																																																					
X	SPECIAL																																																																																																																																																																					
CODE	L/MIN																																																																																																																																																																					
0	NONE																																																																																																																																																																					
1	1																																																																																																																																																																					
2	2																																																																																																																																																																					
3	3																																																																																																																																																																					
4	4																																																																																																																																																																					
X	SPECIAL																																																																																																																																																																					
CODE	SUCTION ORIENTATION																																																																																																																																																																					
0	VERTICAL																																																																																																																																																																					
A	12 O'CLOCK																																																																																																																																																																					
B	3 O'CLOCK																																																																																																																																																																					
C	6 O'CLOCK																																																																																																																																																																					
D	9 O'CLOCK																																																																																																																																																																					
TYPE	RANGE (BARS)	CODE																																																																																																																																																																				
LOW PROFILE HIGH PRESSURE	100 - 250	H																																																																																																																																																																				
LOW PROFILE LOW PRESSURE	10 - 100	L																																																																																																																																																																				
SPECIAL		X																																																																																																																																																																				
CODE	TYPE	* CAPACITY																																																																																																																																																																				
0	NO RESERVOIR	HORIZONTAL VERTICAL																																																																																																																																																																				
A	PLASTIC RECTANGULAR	1.1 1.8																																																																																																																																																																				
B	PLASTIC RECTANGULAR	1.7 1.7																																																																																																																																																																				
X	SPECIAL																																																																																																																																																																					
CONTROL	CODE																																																																																																																																																																					
RETURN PORT ADAPTOR	A																																																																																																																																																																					
MANUAL RELEASE	M																																																																																																																																																																					
SOLENOID RELEASE	S																																																																																																																																																																					
SOLENOID RELEASE WITH DEAD-MAN MANUAL OVER-RIDE	D																																																																																																																																																																					
SOLENOID RELEASE WITH TWIST MANUAL OVER-RIDE	T																																																																																																																																																																					
4 WAY SINGLE SOLENOID DCV	V																																																																																																																																																																					
4 WAY SINGLE SOLENOID DCV, P.O. CHECK ON 'A'	W																																																																																																																																																																					
HAND PUMP	H																																																																																																																																																																					
SPECIAL EQUIPMENT	X																																																																																																																																																																					
COIL VOLTAGE	CODE																																																																																																																																																																					
NOT APPLICABLE	0																																																																																																																																																																					
12V. DC (DUAL SPARE)	12																																																																																																																																																																					
12V. DC (DIN43650 PLUG)	13																																																																																																																																																																					
24V. DC (DUAL SPARE)	24																																																																																																																																																																					
24V. DC (DIN43650 PLUG)	25																																																																																																																																																																					
SPECIAL	X																																																																																																																																																																					
CODE	BREATHER ORIENTATION																																																																																																																																																																					
A	11 O'CLOCK																																																																																																																																																																					
B	1 O'CLOCK																																																																																																																																																																					
C	6 O'CLOCK																																																																																																																																																																					
D	9 O'CLOCK																																																																																																																																																																					
V	VERTICAL																																																																																																																																																																					
CODE	START SWITCH																																																																																																																																																																					
0	NOT FITTED																																																																																																																																																																					
1	12 O'CLOCK																																																																																																																																																																					
2	3 O'CLOCK																																																																																																																																																																					
3	6 O'CLOCK																																																																																																																																																																					
4	9 O'CLOCK																																																																																																																																																																					

**UNIT FOR STANDARD UNITS. WHERE 'X' APPEARS IN THE CODE INDICATING SPECIAL AND/OR ADDITIONAL EQUIPMENT, SAVERY WILL ALLOCATE A UNIQUE SPECIFICATION No (4 DIGITS)**

**STATE 'V' IF VERTICALLY MOUNTED**  
**STATE 'H' IF HORIZONTALLY MOUNTED**

**STATE PRESSURE SETTING - BAR -**

**OBSERVING UNIT HORIZONTALLY FROM TANK END WITH RELIEF VALVE AT 12 O'CLOCK**

**\* USEABLE CAPACITY IN LITRES**  
**# STD STOCK ITEMS**