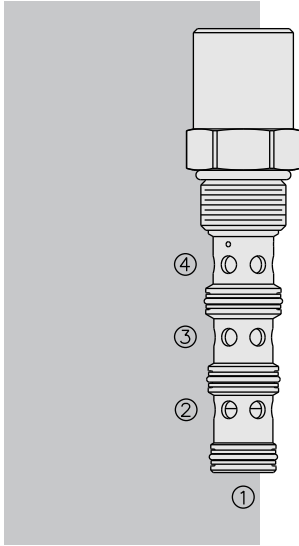
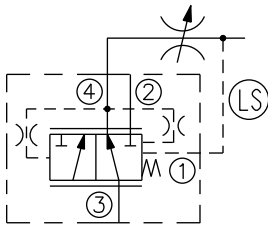


# HEC12-43 Pressure Compensator, Dynamic Load-Sense



**ISO SYMBOL**



**DESCRIPTION**

A screw-in, cartridge-style, priority-on-demand, pressure compensator with dynamic load sense intended to provide priority flow in the required amount, while allowing excess flow to be used for auxiliary functions.

**OPERATION**

With inlet flow at port 3, the **HEC12-43** will deliver required priority flow at port 4, regardless of load pressure. Excess flow exits, or is bypassed, at port 2. Port 1 is the load sense port. All ports may be fully pressurized.

**FEATURES**

- Hardened parts for long life.
- Quiet, modulated response.

**RATINGS**

**Operating Pressure:** 350 bar (5075 psi) 10% cycle life 420 bar (6090 psi)

**Proof Pressure:** 690 bar (10000 psi)

**Burst Pressure:** 1380 bar (20000 psi)

**Maximum Inlet Flow Rate:**

- 68 lpm (18 gpm) with 5.5 bar (80 psi) compensating spring;
- 95 lpm (25 gpm) with 11 bar (160 psi) compensating spring

**Priority Flow Rate:** Up to 80% of maximum input flow

**Load Sense Line Flow Rate:** 1.1 lpm (0.3 gmp) maximum with 350 bar (5075 psi) pressure adn Port 3 and Ports 2 and 4 blocked

**Flow Maintenance:** See performance chart

**Temperature:** -54° to 107°C (-65° to 225°F) with PPDI Urethane seals

**Filtration:** See page 9.010.1

**Fluids:** Mineral-based or synthetics with lubricating properties at viscosities of 7.4 to 420 cSt (50 to 2000 sus); See Temperature and Oil Viscosity, page 9.060.1

**Installation:** No restrictions; See page 9.020.1

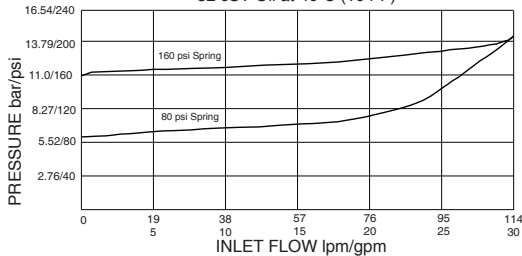
**Cavity:** HVC12-4

**Cavity Tool:** HCT12-4-xxx; See page 8.600.1

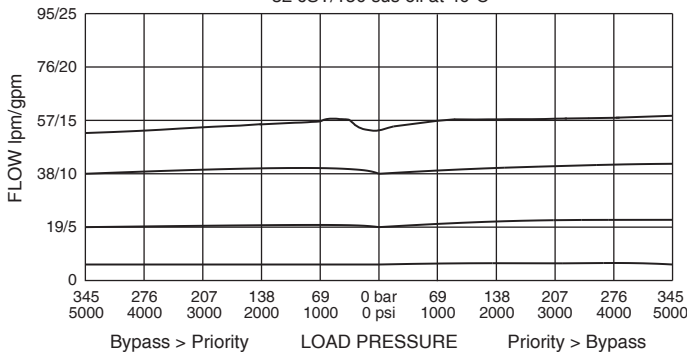
**Seal Kit:** HSK12-4U-0; See page 8.650.1

**PERFORMANCE (Cartridge Only)**

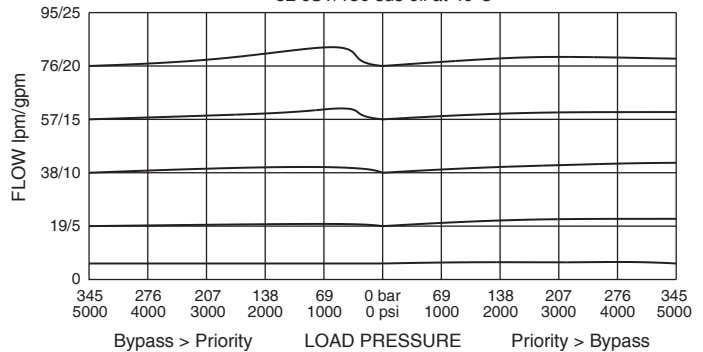
Pressure Drop vs. Inlet Flow  
Port 3 to Port 2, Port 4 Blocked  
32 cST Oil at 40°C (104°F)



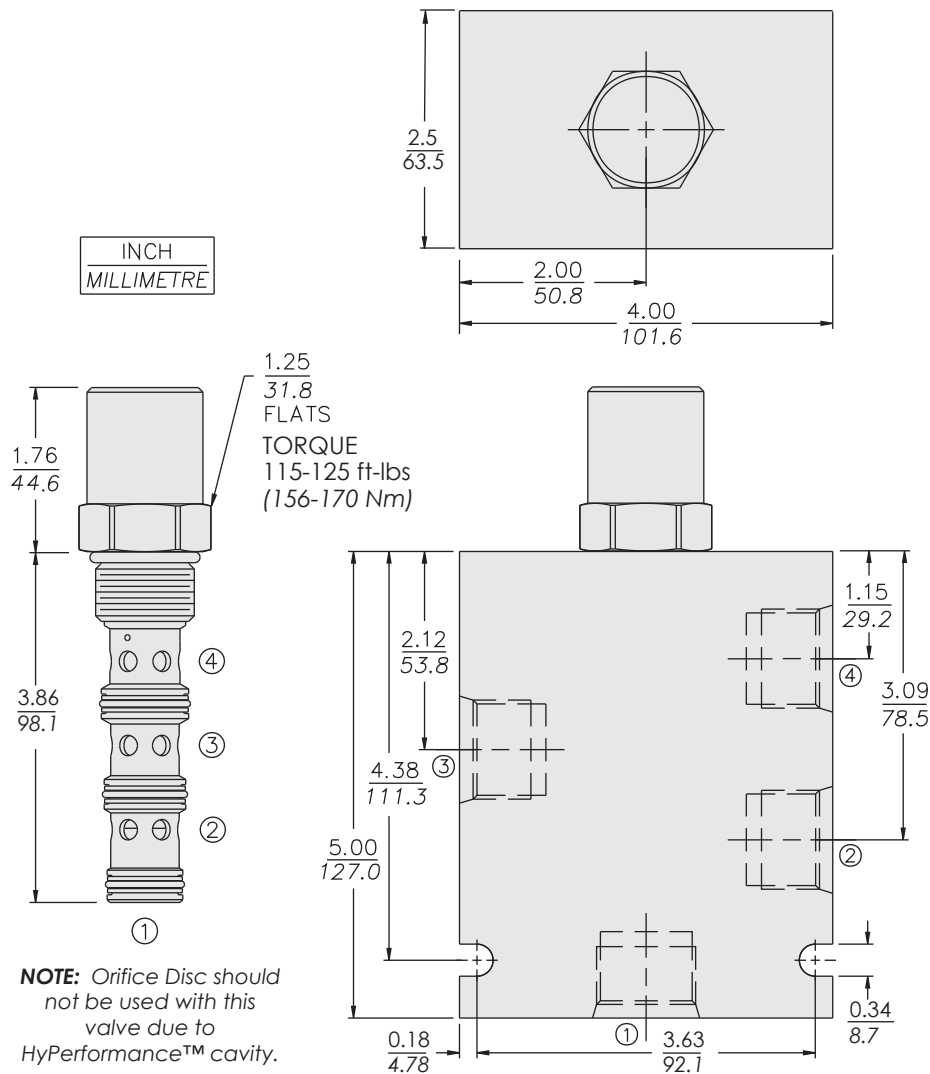
Priority Flow vs. Load  
HEC12-43-80 at 68 lpm/18 gpm Inlet Flow  
32 cST/150 sus oil at 40°C



Priority Flow vs. Load  
HEC12-43-160 at 95 lpm/25 gpm Inlet Flow  
32 cST/150 sus oil at 40°C



## DIMENSIONS



## MATERIALS

**Cartridge:** Weight: 0.44 kg. (0.98 lbs.)  
Steel with hardened work surfaces.  
Zinc-plated exposed surfaces.  
Urethane seals without back-up rings standard.

**Ported Body:** Weight: 4.05 kg. (8.93 lbs.)  
HyPerformance Ductile iron (code 'D') standard. Rated to 354 bar (5000 psi)

## TO ORDER

**HEC12-43 - - -**

<b>Porting</b>			
Cartridge Only	0		
SAE 12	12TD		
*3/4 in. BSP	6BD		
* BSP body; U.K. Mfg. Only			
		<b>Compensator Spring</b>	
		80	5.5 bar (80 psi)
		150	10.3 bar (150 psi)
		<b>Seals</b>	
		U	PPDI Urethane