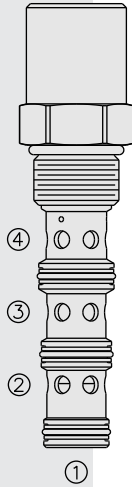


## EC12-43 Pressure Compensator



### DESCRIPTION

A screw-in, cartridge-style, priority-on-demand, pressure compensator with dynamic load sense intended to provide priority flow in the required amount, while allowing excess flow to be used for auxiliary functions.

### OPERATION

With inlet flow at port ③, the **EC12-43** will deliver required priority flow at port ④, based on the size of the external orifice, regardless of load pressure. Excess flow exits, or is bypassed, at port ②. Port ① is the load sense port. All ports may be fully pressurized.

### FEATURES

- Hardened parts for long life.
- Quiet, modulated response.
- Industry common cavity.

### RATINGS

**Operating Pressure:** Inlet: 345 bar (5000 psi);

Note: Steel body required when used at or near 5000 psi.

**Maximum Input Flow Rate:** 95 lpm (25 gpm) with 160 psi compensating spring;  
68 lpm (18 gpm) with 80 psi compensating spring

**Priority Flow Rate:** Up to 80% of input flow

**Flow Maintenance:** See performance chart

**Temperature:** -40 to 120°C with Buna N seals

**Filtration:** See page 9.010.1

**Fluids:** Mineral-based or synthetics with lubricating properties at viscosities of 7.4 to 420 cSt (50 to 2000 sus); See Temperature and Oil Viscosity, page 9.060.1

**Installation:** No restrictions; See page 9.020.1

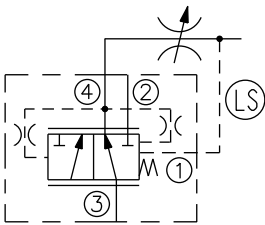
**Cavity:** VC12-4; See page 9.112.1

**Cavity Tool:** CT12-4-XXX; See page 8.600.1

**Seal Kit:** SK12-4X-MMM; See page 8.650.1

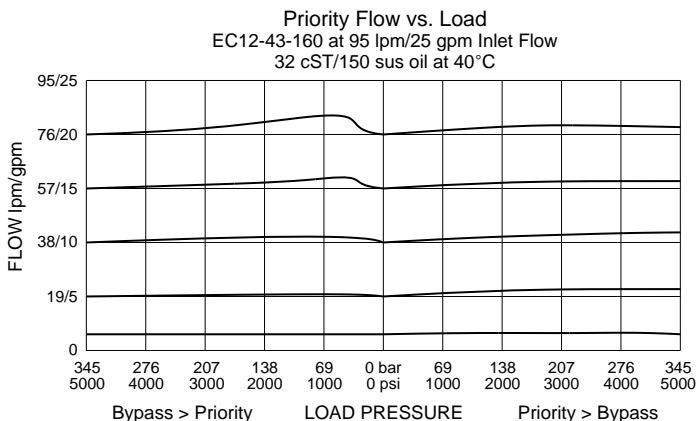
### SYMBOLS

#### USASI/ISO:

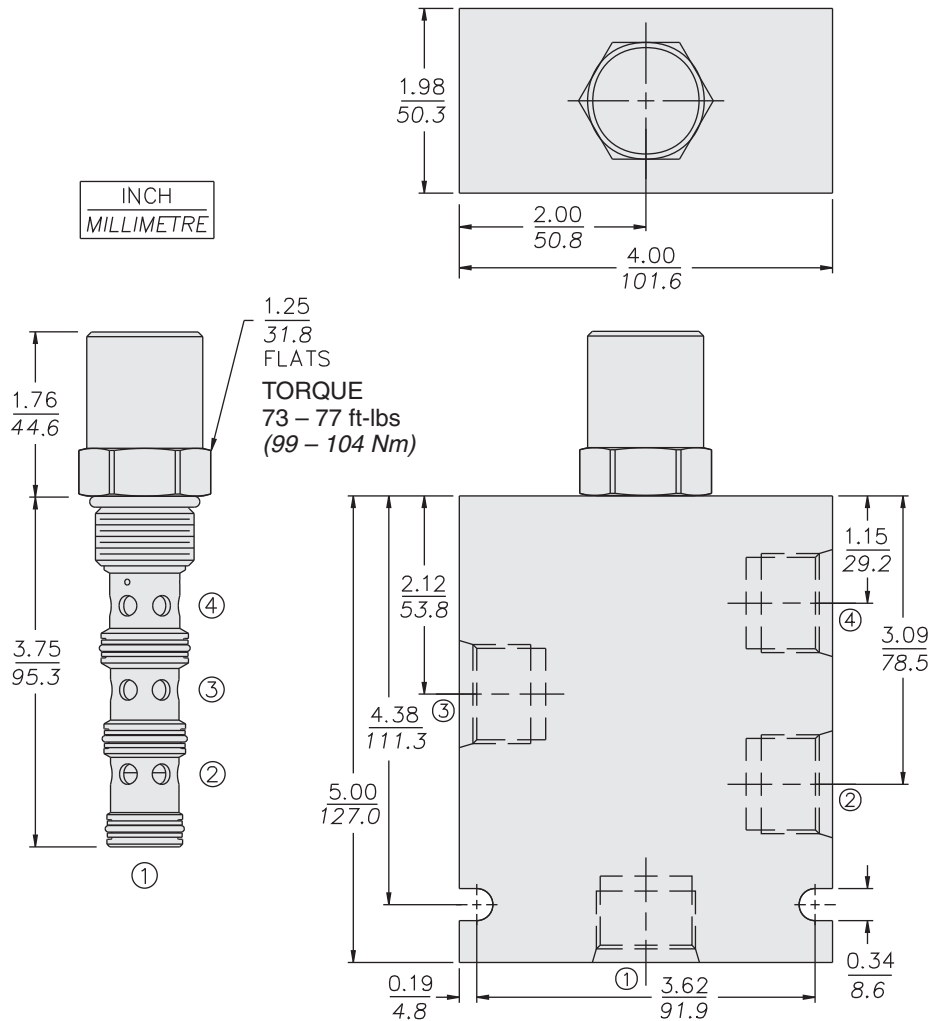


**Note:** This valve, the EC12-43, replaces the older EC12-41 functionally, although the two valves have different port logic. We will continue to provide the EC12-41 for existing customers, but recommend conversion to the new EC12-43 for new designs. For more information consult factory.

### PERFORMANCE (Cartridge Only)



**DIMENSIONS**



**MATERIALS**

**Cartridge:** Weight: 0.46 kg. (1.02 lbs.)  
Steel with hardened work surfaces.  
Zinc-plated exposed surfaces.  
Buna N O-rings and polyester elastomer back-ups standard.

**Standard Ported Body:** Weight: 1.50 kg. (3.30 lbs.) Anodized high-strength 6061 T6 aluminum alloy, rated to 207 bar (3000 psi). Ductile iron bodies available; dimensions may differ. See page 8.012.1

**TO ORDER**

