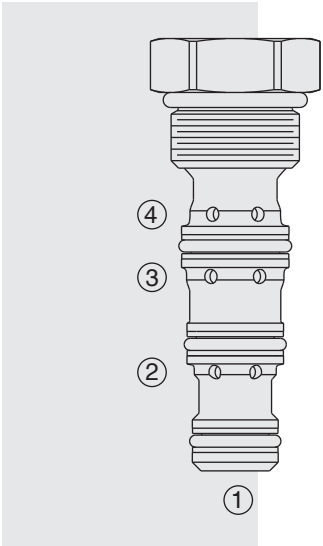


# DC08-40 Pilot Operated Check Valve



## DESCRIPTION

A dual pilot operated check valve for use in blocking or load-holding circuits.

## OPERATION

The **DC08-40** will block flow from 1 to 2, and from 4 to 3. Flow is allowed in the opposite direction when pressure is applied to port 2 and/or port 3.

The valve has a 3:1 pilot ratio, so at least 1/3 of the load pressure at port 1 or 4 is required at the pilot lines (ports 2 or 3) to open the flow passage to allow flow from ports 1 or 4.

The check is spring-biased at 25 psi to assure holding in a static or no load condition. An optional spring biased at 135 psi is available.

**Note:** Orifice disc cannot be used with this product.

## FEATURES

- Hardened seat for long life and low leakage.
- Low pressure drop.

## RATINGS

**Operating Pressure:** Inlet: 240 bar (3500 psi)

**Flow:** Rated Inlet Flow: 19 lpm (5 gpm); see performance chart

**Pilot Ratio:** 3:1

**Check Spring Bias:** 1.7 bar (25 psi); Optional 9.3 bar (135 psi)

**Leakage:** 5 drops per minute (0.25 ml per minute) at 3000 psi

**Temperature:** -40 to 120°C with Buna N seals

**Filtration:** See page 9.010.1

**Fluids:** Mineral-based or synthetics with lubricating properties at viscosities of 7.4 to 420 cSt (50 to 2000 sus); See Temperature and Oil Viscosity, page 9.060.1

**Installation:** No restrictions; See page 9.020.1

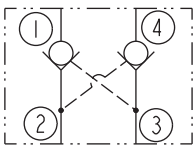
**Cavity:** VC08-4; See page 9.108.1

**Cavity Tool:** CT08-4XX-X-X; See page 8.600.1

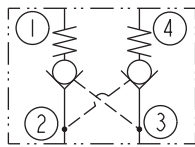
**Seal Kit:** SK08-4X-MMM; See page 8.650.1

## SYMBOLS

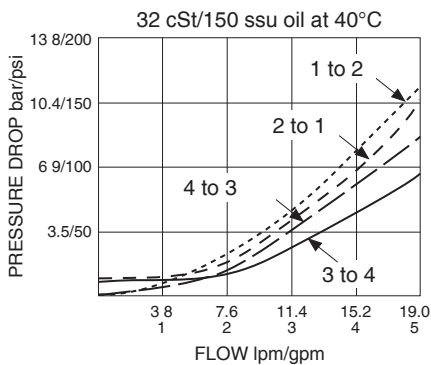
### USASI:



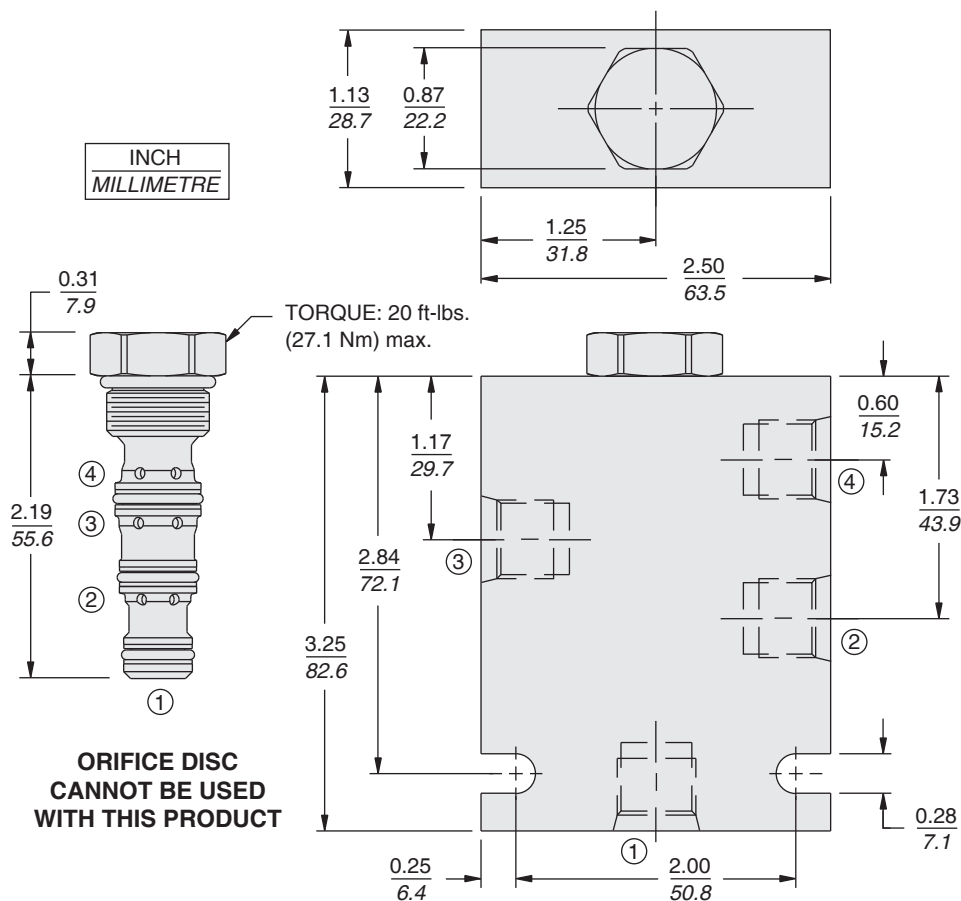
### ISO:



## PERFORMANCE (Cartridge Only)



## DIMENSIONS



## MATERIALS

**Cartridge:** Weight: 0.13 kg. (0.28 lbs.)  
Steel with hardened work surfaces.  
Zinc-plated exposed surfaces.  
Buna N O-rings and polyester elastomer back-ups standard.

**Standard Ported Body:** Weight:  
0.18 kg. (0.40 lbs.) Anodized high-strength 6061 T6 aluminum alloy, rated to 207 bar (3000 psi). Ductile iron bodies available; dimensions may differ. See page 8.008.1

## TO ORDER

|                              |              |                    |                            |
|------------------------------|--------------|--------------------|----------------------------|
| <b>DC08-40 -</b>             |              | <b>Bias Spring</b> |                            |
| <b>Porting</b>               | <b>0</b>     | <b>25</b>          | 1.7 bar (25 psi) Standard  |
| Cartridge Only               | <b>6T</b>    | <b>135</b>         | 9.3 bar (135 psi) Optional |
| SAE 6                        |              |                    |                            |
| 1/4 in. BSP*                 | <b>2B</b>    |                    |                            |
| 3/8 in. BSP*                 | <b>3B</b>    |                    |                            |
| *BSP Body;<br>U.K. Mfr. Only |              |                    |                            |
|                              | <b>Seals</b> |                    |                            |
|                              | <b>N</b>     |                    | Buna N (Std.)              |
|                              | <b>V</b>     |                    | Fluorocarbon               |