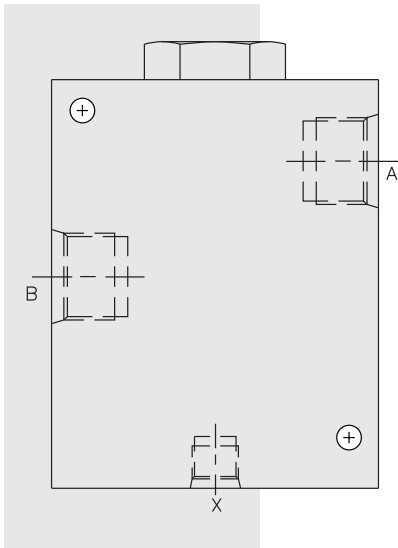


HPCV16 HyPerformance™ Check, Pilot-to-Open



DESCRIPTION

An in-line-housed, pilot-operated, hydraulic check valve for use in high pressure blocking or load-holding circuits.

OPERATION

The **HPCV16** allows flow from B to A, while normally blocking flow from A to B. Flow will be allowed from A to B when pressure is applied at X.

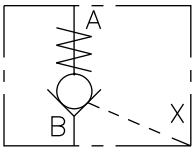
This valve has a 2.3:1 pilot ratio, meaning that at least 44 percent of the load pressure held at A is required at X to open the valve.

The check is spring-biased at 1.7 bar (25 psi) or 4.1 bar (60 psi) to assure holding in static or no-load conditions. A sealed pilot piston option is available.

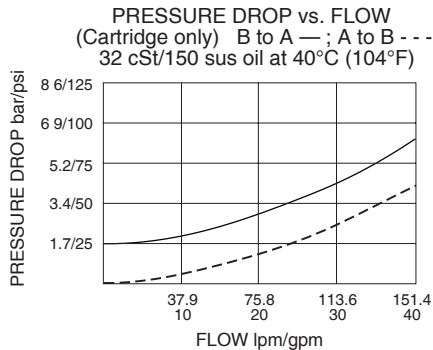
FEATURES

- Hardened seat for long life and low leakage.
- Optional sealed pilot piston.
- Optional spring ranges.
- Check section is serviceable as a cartridge.
- All HyPerformance products are tested to the rigorous standards of the NFPA specification T2.6.1.
- All HyPerformance valves are tested at a verification level of 90% and an assurance of 99%.

ISO SYMBOL



PERFORMANCE (Cartridge Only)



RATINGS

Operating Pressure: 350 bar (5075 psi); 10% cycle life: 420 bar (6090 psi)

Proof Pressure: 689 bar (10000 psi)

Burst Pressure: 379 bar (20000 psi)

Flow: 151 lpm (40 gpm)

Internal Leakage:

A to B: 0.25 ml/minute (5 drops/minute) max. at 350 bar (5075 psi);

B to X: 200 ml/minute (12.2 cu. in./minute) max. at 34.5 bar (500 psi);
1.5 lpm (0.4 gpm) at 350 bar (5075 psi)

Cycle Life: One million cycles

Pilot Ratio: 2.3:1

Temperature: -54 to 107°C (-65 to 225°F) with standard Urethane seals

Filtration: See page 9.010.1

Fluids: Mineral-based or synthetics with lubricating properties at viscosities of 7.4 to 420 cSt (50 to 2000 sus); See Temperature and Oil Viscosity, page 9.060.1

Installation: No restrictions; See page 9.020.1

Cavity: HVC16-PVC; See page 9.116.1

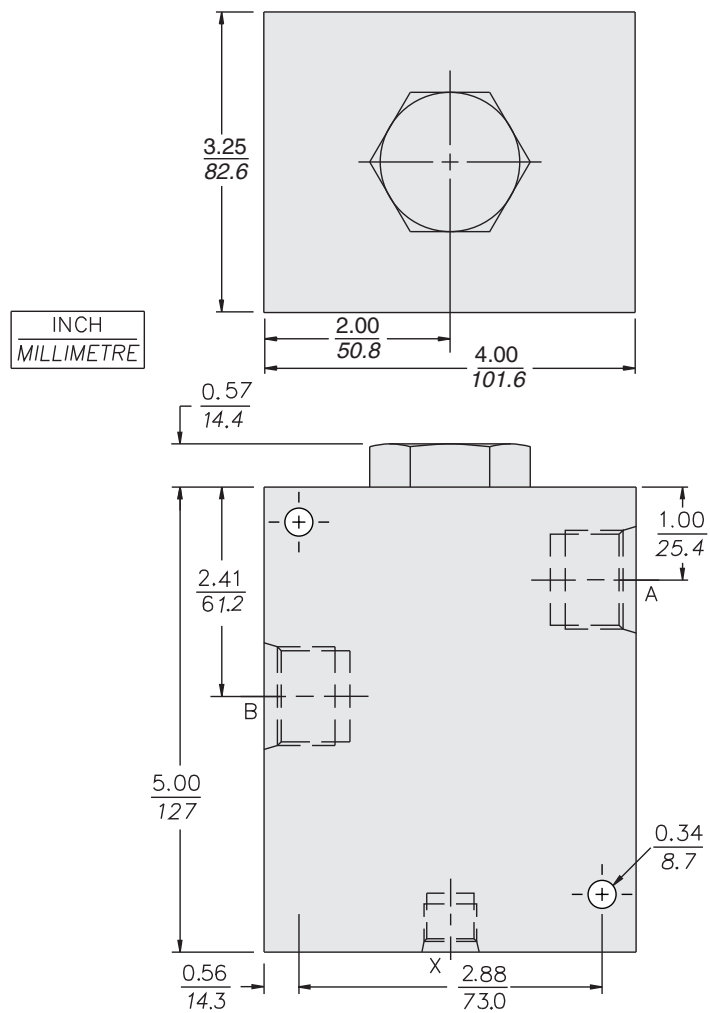
Seal Kit (for HCV16-20): HSK16-2X-T; See page 8.650.1

Piston Seals:

O-Ring (1) - Urethane 6005115

Back-Ups (2) - Urethane 6010115

DIMENSIONS



MATERIALS

Assembly: Weight: 7.23 kg. (15.93 lbs.)

Cartridge (HCV16-20): Weight: 0.32 kg. (0.70 lbs.) Steel with hardened work surfaces. Zinc-plated exposed surfaces. Urethane seals without back-ups standard.

Pilot Piston: Hardened steel.

Ported Body: H-series ductile iron standard. Rated to 345 bar (5000 psi).

TO ORDER

