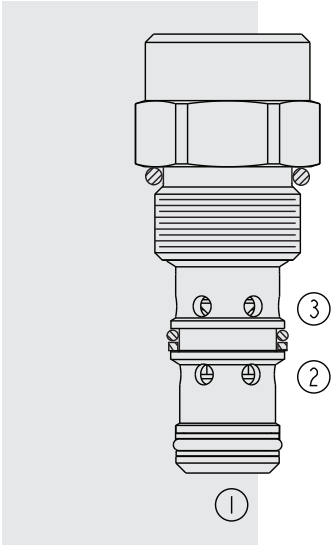


PC10-38 Check, Pilot-Operated with Integrated



DESCRIPTION

A screw-in, cartridge-style, pilot-operated, hydraulic check valve for use in blocking or load-holding circuits. Pilot ratio is 3:1. The cartridge incorporates a low flow thermal relief valve intended to prevent cylinder damage resulting from temperature-induced pressure intensification.

Note: The thermal relief feature is not intended for use in dynamic pressure-limiting applications.

OPERATION

The **PC10-38** allows flow from ports 2 to 3, while blocking flow in the opposite direction. If the pressure at port 3 exceeds the thermal relief setting, a small amount of oil will be allowed to pass from port 3 to port 2, preventing cylinder damage from pressure intensification.

FEATURES

- Integrated low flow thermal relief valve.
- Optional sealed piston.
- Hardened seat for long life and low leakage.
- Industry common cavity.

RATINGS

Operating Pressure: 241 bar (3500 psi)

Proof Pressure: 390 bar (5700 psi)

Flow Rating: 45 lpm (12 gpm)

Maximum Internal Leakage: 0.25 ml/minute (5 drops/minute) at 241 bar (3500 psi)

Pilot Ratio: 3:1

Temperature: -40 to 100°C (-40 to 212°F) with standard Buna seals;
 -26 to 204°C (-15 to 400°F) with Viton seals;
 -54 to 107°C (-65 to 225°F) with Polyurethane seals

Filtration: See page 9.010.1

Fluids: Mineral-based or synthetics with lubricating properties at viscosities of 7.4 to 420 cSt (50 to 2000 sus); See Temperature and Oil Viscosity, page 9.060.1

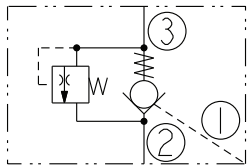
Installation: No restrictions; See page 9.020.1

Cavity: VC10-3; See page 9.110.1

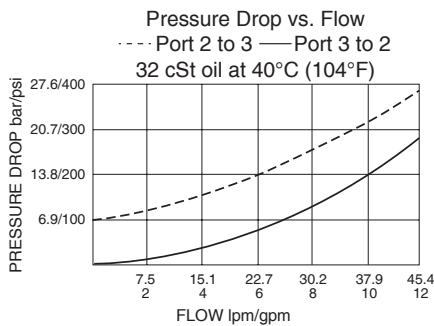
Cavity Tool: CT10-3XX; See page 8.600.1

Seal Kit: SK10-3X-TM; See page 8.650.1

ISO SYMBOL



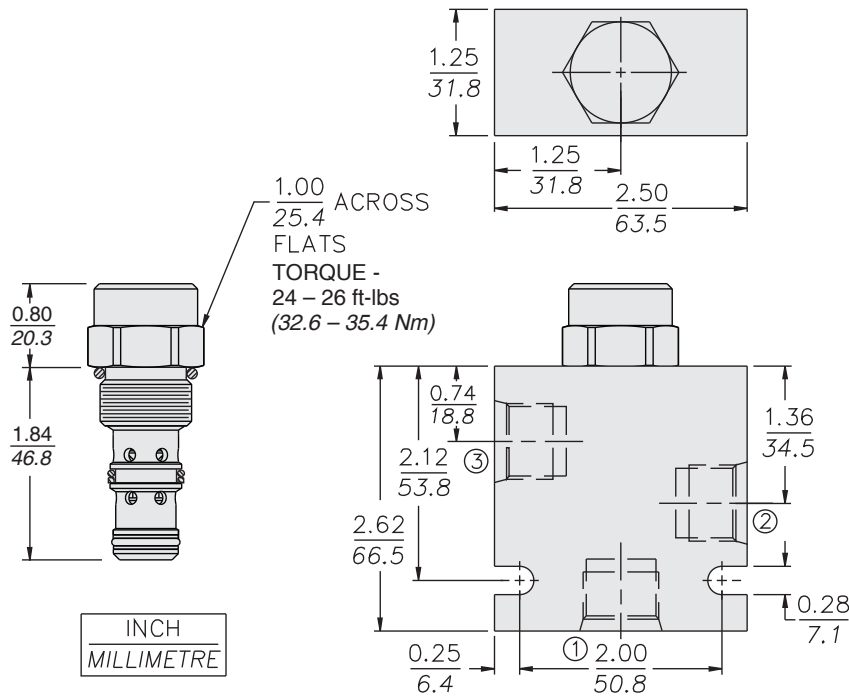
PERFORMANCE (Cartridge Only)



Thermal Relief

PC10-38

DIMENSIONS

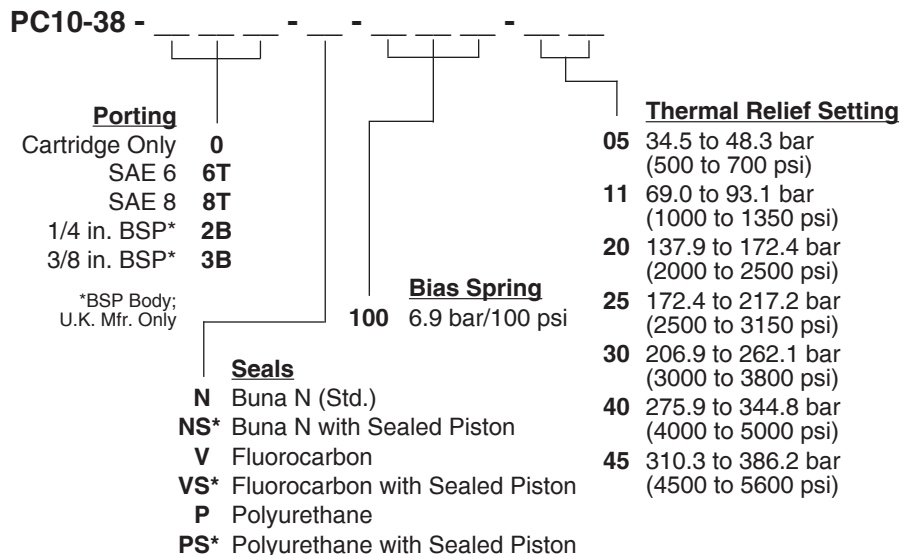


MATERIALS

Cartridge: Weight: 0.14 kg. (0.3 lbs.) Steel with hardened work surfaces. Zinc-plated exposed surfaces. Buna N O-rings and polyester elastomer back-ups standard.

Standard Ported Body: Weight: 0.36 kg. (0.80 lbs.) Anodized high-strength 6061 T6 aluminum alloy, rated to 207 bar (3000 psi). Ductile iron bodies available; dimensions may differ. See page 8.010.1

TO ORDER



Note: NS, VS and PS seal options require 6.9 bar (100 psi) spring minimum.