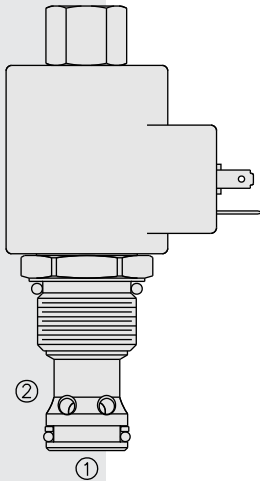


ELECTRO-PROPORTIONAL VALVES—PRESSURE CONTROLS

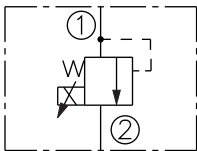
TS12-26 Proportional Electric Relief w/Internally

Patent Pending



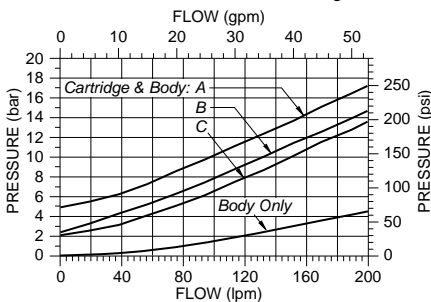
SYMBOLS

USAS/ISO:

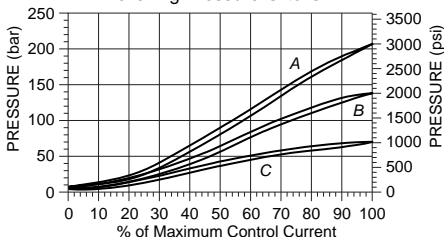


PERFORMANCE

Pressure Drop vs. Flow Characteristic
For Flow ① to ② with Coil De-energized



Relief Pressure vs.
Current (DC) Characteristic
200 Hz PWM
Relieving Pressure ① to ②



DESCRIPTION

A screw-in, cartridge-style, pilot-operated, spool-type hydraulic relief valve, which can be infinitely adjusted across a prescribed range using a variable electric input. Pressure output is proportional to DC current input. This valve is intended for use as a pressure limiting device in demanding applications.

OPERATION

The TS12-26 blocks flow from ① to ② until sufficient pressure is present at ① to open the pilot section by offsetting the electrically induced solenoid force. With no current applied to the solenoid, the valve will relieve at approximately 100 psi.

The optional manual override allows the valve to be set when the electric supply is lost. The manual setting is added to the electric setting. To prevent the system from being over pressurized, the manual override should always be disengaged prior to applying power to the coil.

FEATURES

- Manual Override option.
- Industry common cavity.
- 12 and 24 volt coils standard.
- Optional waterproof E-Coils rated up to IP69K.

RATINGS

Maximum Operating Pressure: 241 bar (3500 psi)

Maximum Control Current: 1.10 amps for 12 VDC coil; 0.55 amps for 24 VDC coil

Relief Pressure Range from Zero to Maximum Control Current:

A: 6.9–207 bar (100–3000 psi)

B: 6.9–138 bar (100–2000 psi)

C: 2.1–69 bar (30–1000 psi)

Rated Flow: 189 lpm (50 gpm); See Performance Charts

Maximum Pilot Flow: **A:** 1.9 lpm (.5 gpm); **B:** 1.3 lpm (.35 gpm); **C:** .9 lpm (.25 gpm)

Hysteresis: Less than 3%

Flow Path: Free Flow: ① to ② coil de-energized; Relieving: ① to ② coil energized

Temperature: -40 to 100°C (-40 to 212°F) with standard Buna N seals

Filtration: See page 9.010.1

Fluids: Mineral-based or synthetics with lubricating properties at viscosities of 7.4 to 420 cSt (50 to 2000 sus); See Temperature and Oil Viscosity, page 9.060.1

Installation Recommendation: When possible, the valve should be mounted below the reservoir oil level. This will maintain oil in the armature preventing trapped air instability. If this is not feasible, mount the valve horizontally for best results.

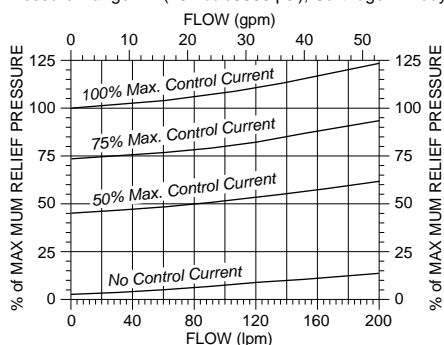
Cavity: VC12-2; See page 9.112.1; **Cavity Tool:** CT12-2XX; See page 8.600.1

Seal Kit: SK12-2X-B; See page 8.650.1

Coil Nut: Part No. 4540560;

For E-coils manufactured prior to 1-1-04, see page 3.400.1 for coil nut info.

Typical Relief Pressure
vs. Flow Characteristic
Typical Relieving Pressure ① to ②
at Various %'s of Maximum Control Current
Pressure Range "A" (207 bar/3000 psi); Cartridge in Body



Recommended Electronic Controllers:

Model EFDR2 Multi-Input Fan Drive Controller.

For more information go to:

<http://www.hydraforce.com/Electro/fandrive.htm>

or

Recommended Electronic Controllers

catalog page 2.001.1 (Table 2)

