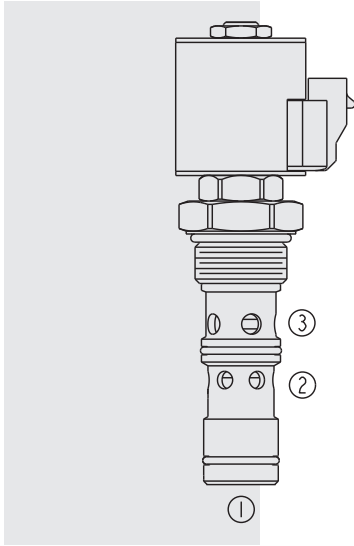


HSPEC16-30 Proportional Flow Control Valve



DESCRIPTION

A high pressure, proportional, solenoid-operated, 3-way, normally-closed, flow control, screw-in hydraulic cartridge valve intended for post-compensated applications with load-sense systems. In post-compensated systems, the load-sense port 1 of the **HSPEC16-30** valve is connected to the highest load, which maintains flow sharing when flow demand exceeds flow supply. Pressure compensation value of the valve defined as pressure difference between inlet and load sense ports is provided by appropriate setup of a pump load sense control or by additional pressure compensator valve, one for the whole system, in case the pump is non-adjustable.

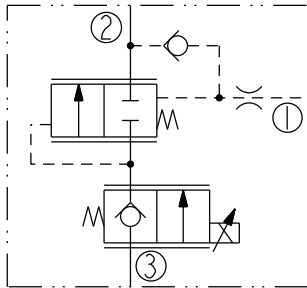
OPERATION

When de-energized, the **HSPEC16-30** blocks flow from port 3 to port 2. The valve will regulate flow out of port 2 regardless of load pressure with flow rate proportional to current applied to the solenoid.

FEATURES

- Industry-common cavity.
- Efficient wet-armature construction.
- Continuous-duty rated coils.
- Optional waterproof E-Coils rated up to IP69K.
- Reduced manifold space claim.
- Flow sharing possible
- All HyPerformance™ valves are tested to the rigorous standards of NFPA specification T2.6.1 and are tested at a verification level of 90% and an assurance of 99%.

ISO SYMBOL



RATINGS

Operating Pressure: 350 bar (5075 psi); 10% cycle life; 420 bar (6090 psi)

Note: All HyPerformance™ products are tested for 900K cycles at 350 bar and 100K at 420 bar.

Proof Pressure: 690 bar (10000 psi)

Burst Pressure: 1241 bar (18000 psi)

Flow Rating: 132 lpm (35 gpm) at 220 psi (15 bar) compensation value; 102 lpm (27 gpm) at 160 psi (11 bar) compensation value.

Internal Leakage: Port 3 to port 2 or port 1 to port 2: 7 drops/minute with 350 bar (5075 psi) at port 3.

Operating Temperature: -54° to 107°C (-65° to 225° F) with urethane seals

Installation: No restrictions; See page 9.020.1;

Filtration: See page 9.010.1

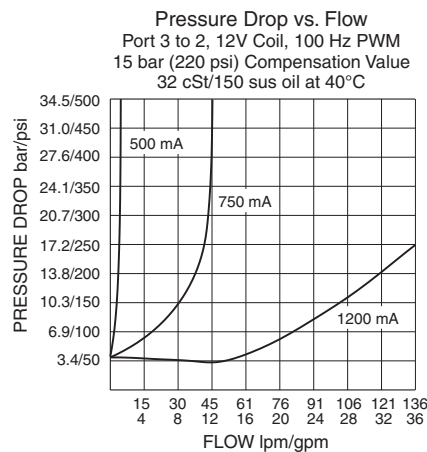
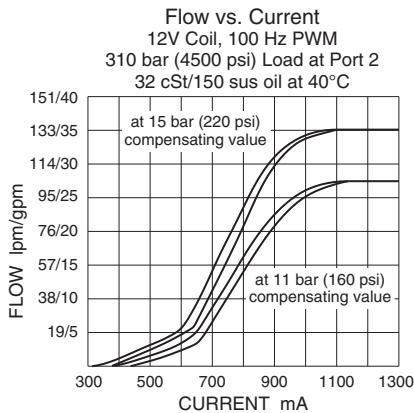
Fluids: Mineral-based or synthetics with lubricating properties at viscosities of 7.4 to 420 cSt (50 to 2000 sus); See Temperature and Oil Viscosity, page 9.060.1

Cavity: HVC16-3SPEC; See page 9.116.1

Cavity Tool: HCT16-3SPEC; See page 8.600.1

Seal Kit: HSK16-3U-0; See page 8.650.1

PERFORMANCE (Cartridge Only)

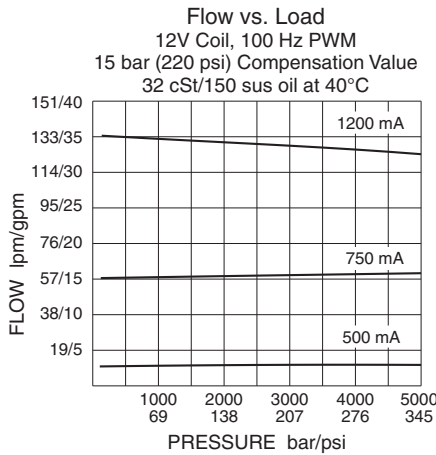


Performance info. continued on next page.

with Integral Compensator

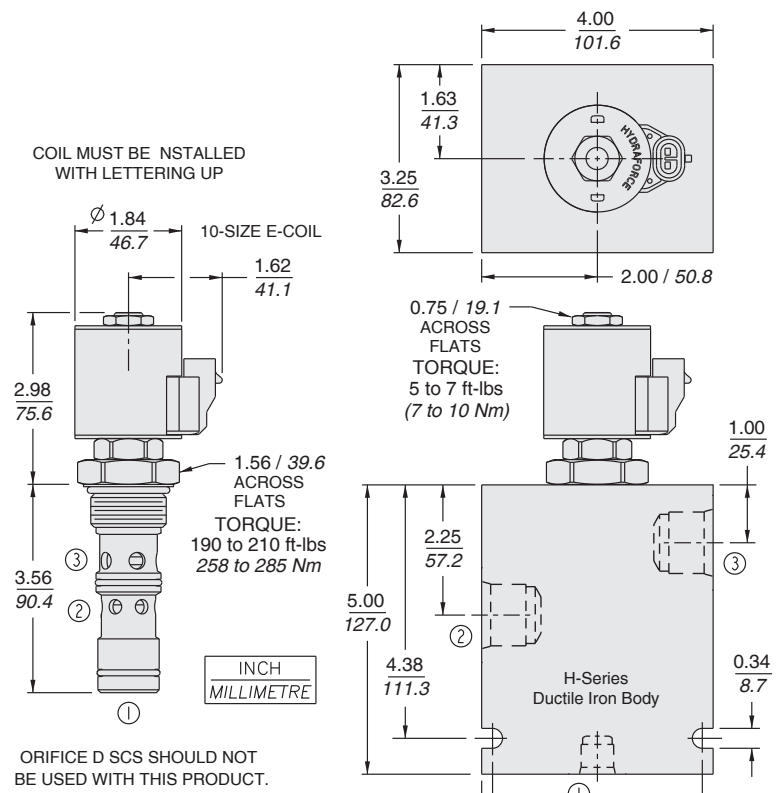
HSPEC16-30

PERFORMANCE (Continued)



Recommended Electronic Controllers:
See page 2.001.1 or our Electronics catalog.

DIMENSIONS



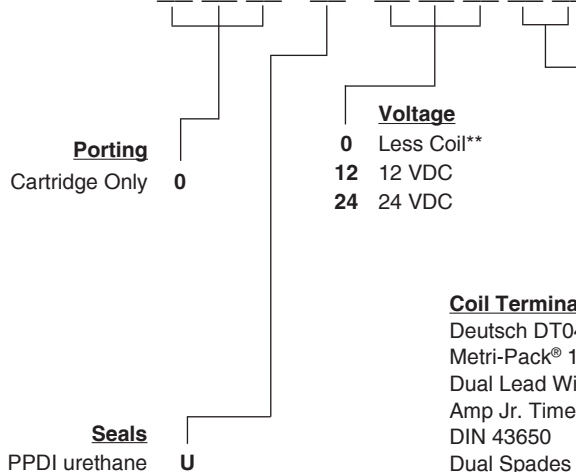
MATERIALS

Cartridge: Weight: 0.53 kg. (1.17 lbs.); Steel with hardened work surfaces. Zinc-plated exposed surfaces. PPD1 urethane seals without back-up rings standard.

E-Coil: Weight: 0.41 kg. (0.9 lbs.); Fully encapsulated with rugged external metal shell. Rated up to IP69K with integral connectors. See page 3.400.1

TO ORDER

HSPEC16-30 -



Coil Termination	E-Coil
Deutsch DT04-2P	ER (IP69K)
Metri-Pack® 150	EY (IP69K)
Dual Lead Wires	EL (IP69K)
Amp Jr. Timer	EJ (IP67)
DIN 43650	EG (IP65)
Dual Spades	—

NOTE: Consult factory for additional seal options.

For Coils with Zener Diode, add "Z" to option code.
For example: "ER/Z". Not available on all models.
See coil option info. on pages 3 200.1 & 3.400.1