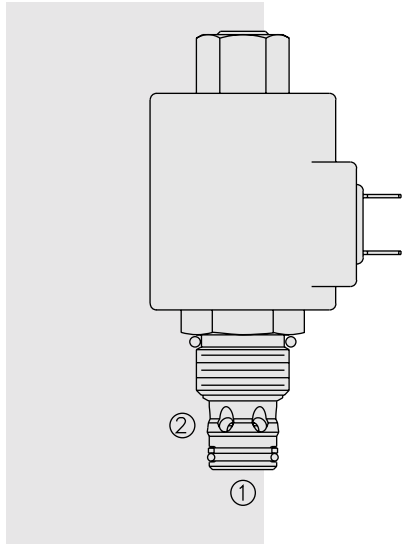


SOLENOID VALVES

SVRV10-26 Spool, 2-Way, Normally Open,



DESCRIPTION

A solenoid-operated, 2-way, spool-type, normally open, screw-in, hydraulic relief valve.

OPERATION

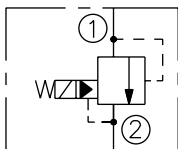
When the coil is de-energized, the valve is open, allowing flow from ① to ②. When the coil is energized, flow from ① to ② is blocked. When the coil is energized and the pressure at ① exceeds the relief setting, the valve will open to allow flow from ① to ②.

FEATURES

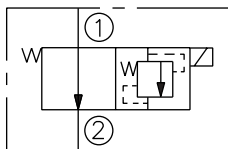
- Various pressure ranges.
- Continuous-duty rated solenoid.
- Hardened spool and cage for long life.
- Optional coil voltages and terminations.
- Efficient wet-armature construction.
- Cartridges are voltage interchangeable.
- Optional waterproof E-Coils rated up to IP69K.
- Unitized, molded coil design.
- Industry common cavity.

SYMBOLS

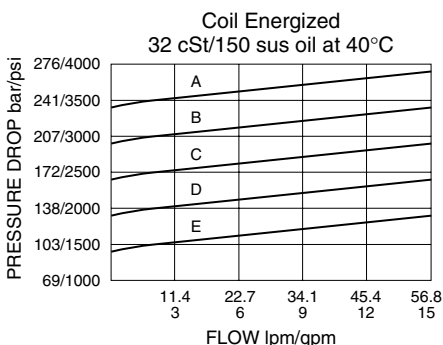
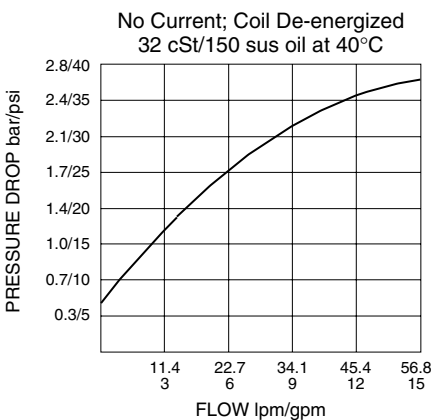
USASI/ISO:



Expanded:



PERFORMANCE (Cartridge Only)



RATINGS

Operating Pressure: 275.8 bar (4000 psi)

Flow: 0 to 56.8 lpm (0 to 15 gpm)

Relief Pressure Settings – defined as pressure evident at 7.57 lpm (2 gpm):

- A: 240 ±13 bar (3500 ±190 psi)
- B: 207 ±12.5 bar (3000 ±180 psi)
- C: 172 ±11.5 bar (2500 ±165 psi)
- D: 138 ±10.5 bar (2000 ±150 psi)
- E: 104 ±9.5 bar (1500 ±135 psi)

For custom OEM settings, consult factory.

Reseat Pressure: 90% of relief pressure setting

Pilot Flow & Leakage at 85% of relief pressure setting: 86 ml (2.9 oz.) per minute

Pressure Rise at Max. Current (Relief Mode): 0.566 ±0.018 bar/lpm (31.0 ±2.0 psi/gpm)

Temperature: -40 to 120°C with standard Buna seals

Coil Duty Rating: Continuous from 85% to 115% of nominal voltage

Initial Coil Current Draw at 20°C: Standard Coil: 1.67 amps at 12 VDC; 0.18 amps at 115 VAC (full wave rectified). E-Coil: 2.0 amps at 12 VDC; 1.0 amps at 24 VDC

Minimum Pull-in Voltage: 85% of nominal at 207 bar (3000 psi)

Filtration: See page 9.010.1

Fluids: Mineral-based or synthetics with lubricating properties at viscosities of 7.4 to 420 cSt (50 to 2000 ssu)

Installation: No restrictions; See page 9.020.1

Cavity: VC10-2; See page 9.110.1

Cavity Tool: CT10-2XX; See page 8.600.1

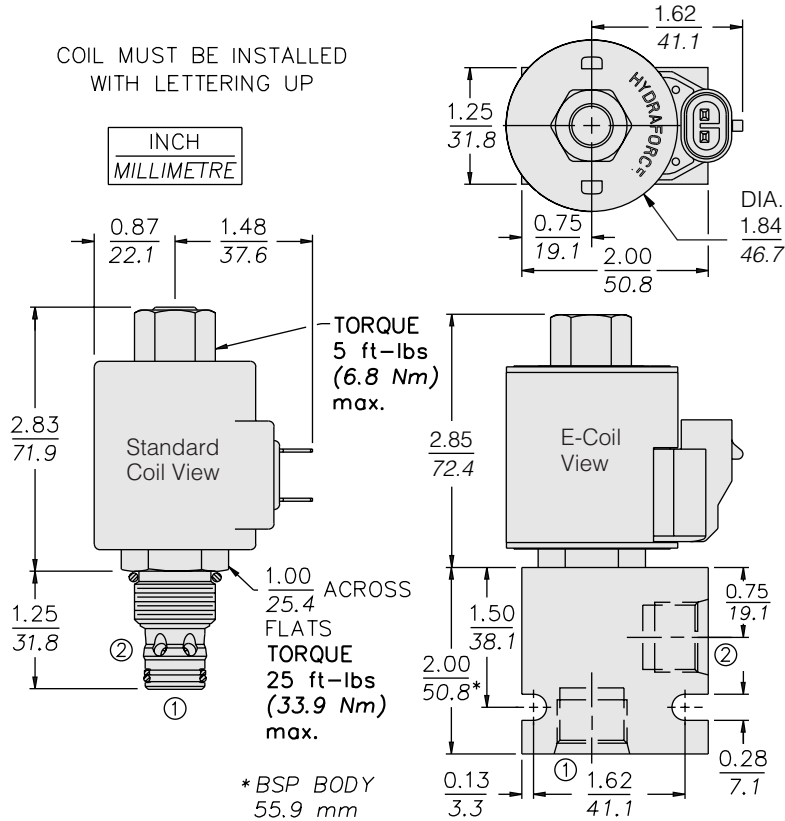
Seal Kit: SK10-2N-B; See page 8.650.1

Coil Nut: Part No. 7004420

with Internal Relief

SVRV10-26

DIMENSIONS



MATERIALS

Cartridge: Weight: 0.19 kg. (0.41 lbs.); Steel with hardened work surfaces. Zinc-plated exposed surfaces. Buna N O-rings and polyester elastomer back-up standard.

Standard Ported Body: Weight: 0.16 kg. (0.35 lbs.); Anodized high-strength 6061 T6 aluminum alloy, rated to 240 bar (3500 psi); See page 8.010.1. Ductile iron and steel bodies available; dimensions may differ; consult factory.

Standard Coil: Weight: 0.27 kg. (0.60 lbs.); Unitized thermoplastic encapsulated, Class H high temperature magnetwire; See page 3.200.1.

E-Coil: Weight: 0.41 kg. (0.9 lbs.); Fully encapsulated with rugged external metal shell; Rated up to IP69K with integral connectors; See page 3.400.1.

TO ORDER

SVRV10-26

Pressure Settings

- 240 ±13 bar (3500 ±190 psi) **A**
- 207 ±12.5 bar (3000 ±180 psi) **B**
- 172 ±11.5 bar (2500 ±165 psi) **C**
- 138 ±10.5 bar (2000 ±150 psi) **D**
- 104 ±9.5 bar (1500 ±135 psi) **E**

For custom OEM settings, consult factory.

Porting

- Cartridge Only **0**
- SAE 6 **6T**
- SAE 8 **8T**
- 1/4 in. BSP* **2B**
- 3/8 in. BSP* **3B**
- 1/2 in. BSP* **4B**

*BSP Body; U.K. Mfr. Only

Voltage Std. Coil

- 0** Less Coil**
- 10** 10 VDC[†]
- 12** 12 VDC
- 24** 24 VDC
- 36** 36 VDC
- 48** 48 VDC
- 24** 24 VAC
- 115** 115 VAC
- 230** 230 VAC

**Includes Std. Coil Nut.

[†] DS, DW or DL terminations only

E-Coil

- 10** 10 VDC
- 12** 12 VDC
- 20** 20 VDC
- 24** 24 VDC

Seals

- N** Buna N (Std.)
- V** Fluorocarbon

Termination (VDC) Std. Coil

- DS** Dual Spades
- DG** DIN 43650
- DL** Leadwires (2)
- DL/W** Leads w/Weatherpak® Connectors
- DR** Deutsch DT04-2P

Termination (VAC) Std. Coil

- AG** DIN 43650
- AP** 1/2 in. Conduit

Termination (VDC) E-Coil

- ER** Deutsch DT04-2P (IP69K Rated)
- EY** Metri-Pack® 150 (IP69K Rated)

Coils with internal diode are available. Consult factory.