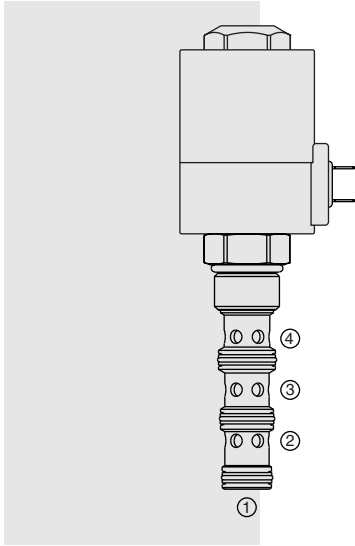


SOLENOID VALVES

SV12-42 Spool, 2-Position, 4-Way



DESCRIPTION

A solenoid-operated, 2-position, 4-way, direct-acting spool-type, screw-in hydraulic cartridge valve.

OPERATION

When de-energized, the **SV12-42** allows flow from ③ to ④, and from ② to ①. When energized, the spool shifts to block flow at all ports.

Note: Consult factory for applications where port ① will be used as an inlet.

FEATURES

- Continuous-duty rated solenoid.
- Hardened spool and cage for long life.
- Optional coil voltages and terminations.
- All ports may be fully pressurized.
- Manual override option.
- Heavy-duty waterproof E-Coils rated up to IP69K.

RATINGS

Operating Pressure: 240 bar (3500 psi) max.

Flow: See Performance Chart

Leakage: 410 cc/minute (25 cu. in./minute) at 240 bar (3500 psi)

Temperature: -40 to 120°C with Buna N seals

Coil Duty Rating: See Chart

Response Time: Pull-In: 100 msec; Drop-Out: 100 msec

Initial Coil Current Draw at 20°C: 2.8 amps at 12 VDC

Filtration: See page 9.010.1

Fluids: Mineral-based or synthetics with lubricating properties at viscosities of 7.4 to 420 cSt (50 to 2000 ssu)

Installation: No restrictions; See page 9.020.1

Cavity: VC12-4; See page 9.112.1

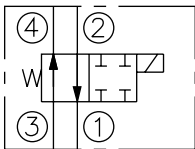
Cavity Tool: CT12-4XX; See page 8.600.1

Seal Kit: SK12-4X-MMM; See page 8.650.1

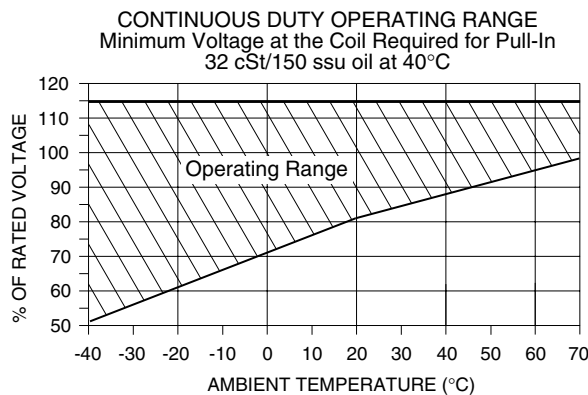
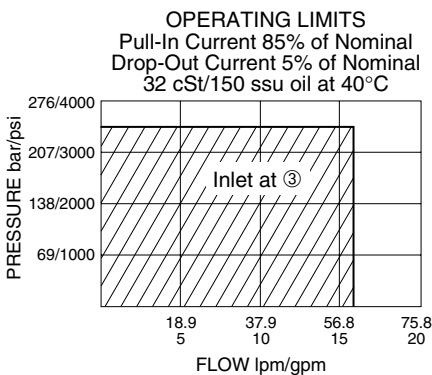
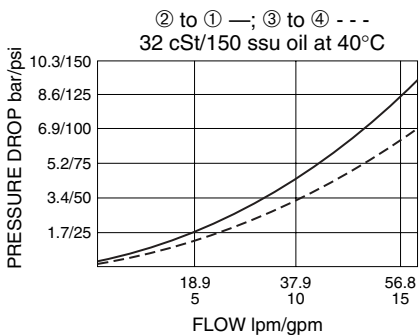
E-Coil Nut: Part No. 7085180

SYMBOLS

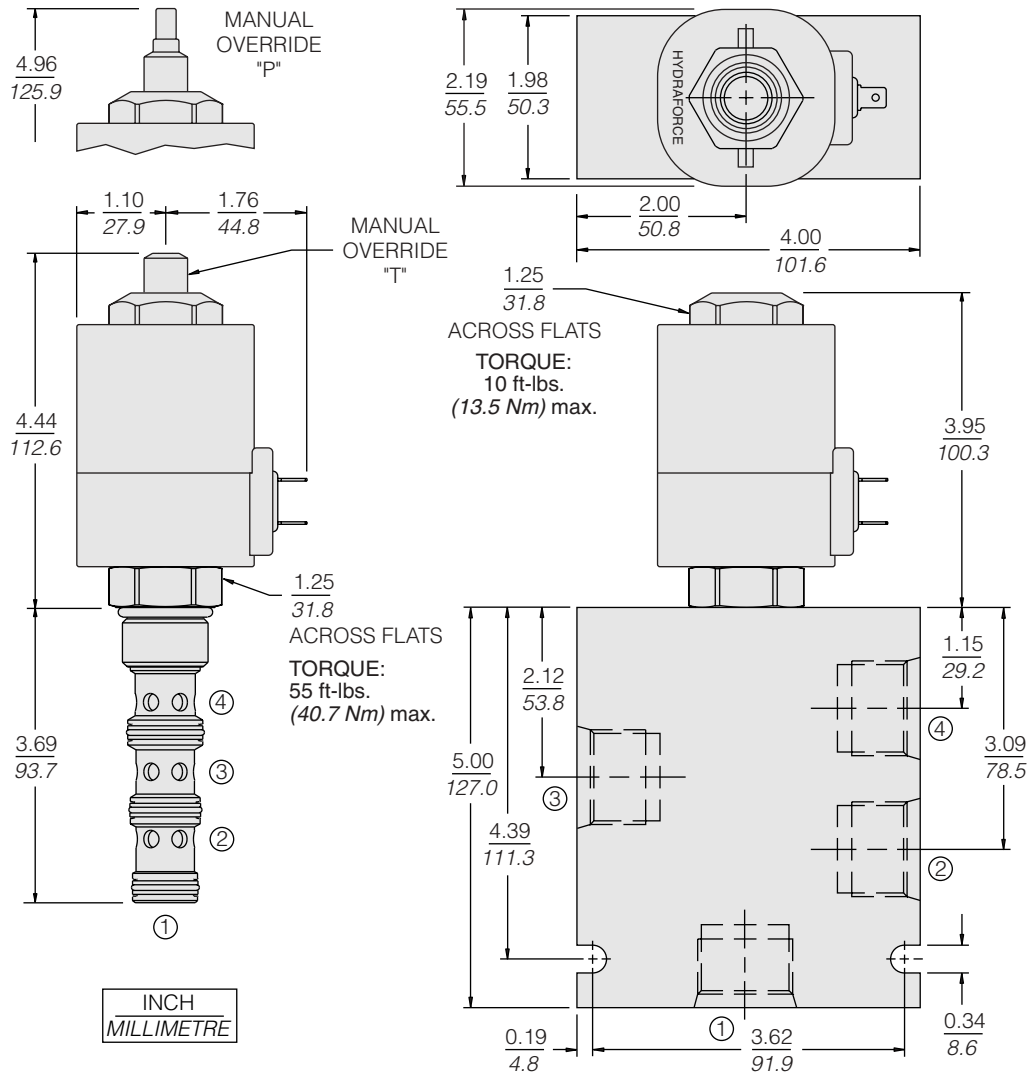
USAS/ISO:



PERFORMANCE (Cartridge Only)



DIMENSIONS



MATERIALS

Cartridge: Weight: 0.39 kg. (0.85 lbs.); Steel with hardened work surfaces. Zinc-plated exposed surfaces; Buna N O-rings and TFE back-ups standard.

Standard Ported Body: Weight: 1.5 kg. (3.3 lbs.); Anodized high-strength 6061 T6 aluminum alloy, rated to 240 bar (3500 psi); See page 8.012.1. Ductile iron and steel bodies available; dimensions may differ; consult factory.

E-Coil: Weight: 1.36 kg. (3.0 lbs.); Fully encapsulated with rugged external metal shell; Rated up to IP69K with integral connectors; See page 3.400.1.

TO ORDER

SV12-42

Manual Override

None (Blank)
Option **P**
Option **T**

Porting

Cartridge Only **0**
SAE 10 **10T**
SAE 12 **12T**
3/4 in. BSP* **6B**

*BSP Body; U.K. Mfrs. Only

Seals

Buna N (Std.) **N**
Fluorocarbon **V**

Terminations (VDC)

EL Leadwires (2), IP65 Rated
ES Dual Spades, IP65 Rated
EG DIN 43650, IP65 Rated
EW Leads w/Weather-Pack® Connector, IP65 Rated
EY Metri-Pack® 150 Connector, IP69K Rated

Voltage

0 Less Coil
12 12 VDC
24 24 VDC
36 36 VDC
48 48 VDC

Coils with internal diode are available. Consult factory.

Other coil voltages may be available for OEM applications. Consult factory.