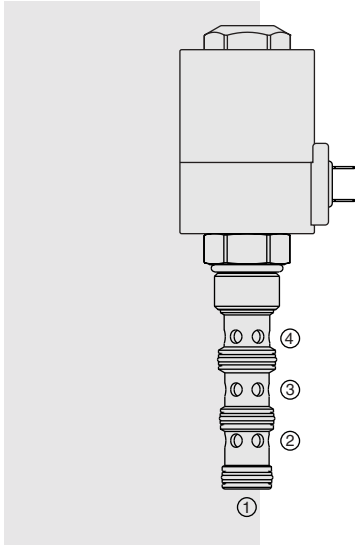


SOLENOID VALVES

SV12-41 Spool, 2-Position, 4-Way



DESCRIPTION

A solenoid-operated, 2-position, 4-way, direct-acting spool-type, screw-in hydraulic cartridge valve, intended as a bidirectional blocking valve.

OPERATION

When de-energized, the **SV12-41** blocks flow at all ports. When energized, the spool shifts to allow flow from ③ to ④, and from ② to ①.

Note: Consult factory for applications where port ① will be used as an inlet.

FEATURES

- Continuous-duty rated solenoid.
- Hardened spool and cage for long life.
- Optional coil voltages and terminations.
- All ports may be fully pressurized.
- Heavy-duty waterproof E-Coils rated up to IP69K.

RATINGS

Operating Pressure: 240 bar (3500 psi) max.

Flow: See Performance Chart

Leakage: 410 cc/minute (25 cu. in./minute) at 240 bar (3500 psi)

Temperature: -40 to 120°C with Buna N seals

Coil Duty Rating: See Chart

Response Time: Pull-In: 100 msec; Drop-Out: 100 msec

Initial Coil Current Draw at 20°C: 2.8 amps at 12 VDC

Filtration: See page 9.010.1

Fluids: Mineral-based or synthetics with lubricating properties at viscosities of 7.4 to 420 cSt (50 to 2000 ssu)

Installation: No restrictions; See page 9.020.1

Cavity: VC12-4; See page 9.112.1

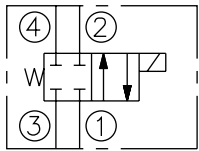
Cavity Tool: CT12-4XX; See page 8.600.1

Seal Kit: SK12-4X-MMM; See page 8.650.1

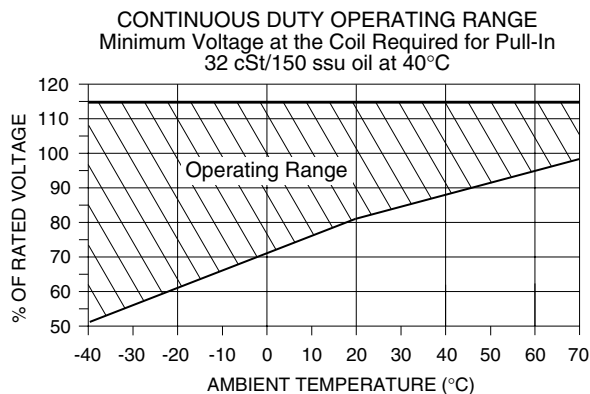
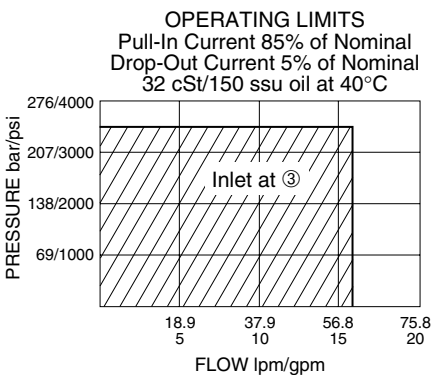
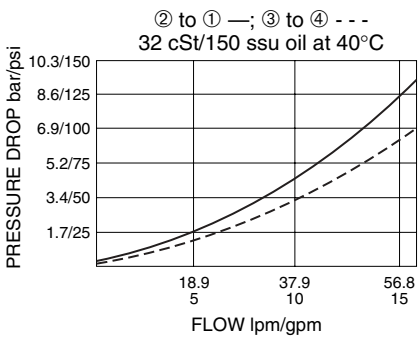
E-Coil Nut: Part No. 7085180

SYMBOLS

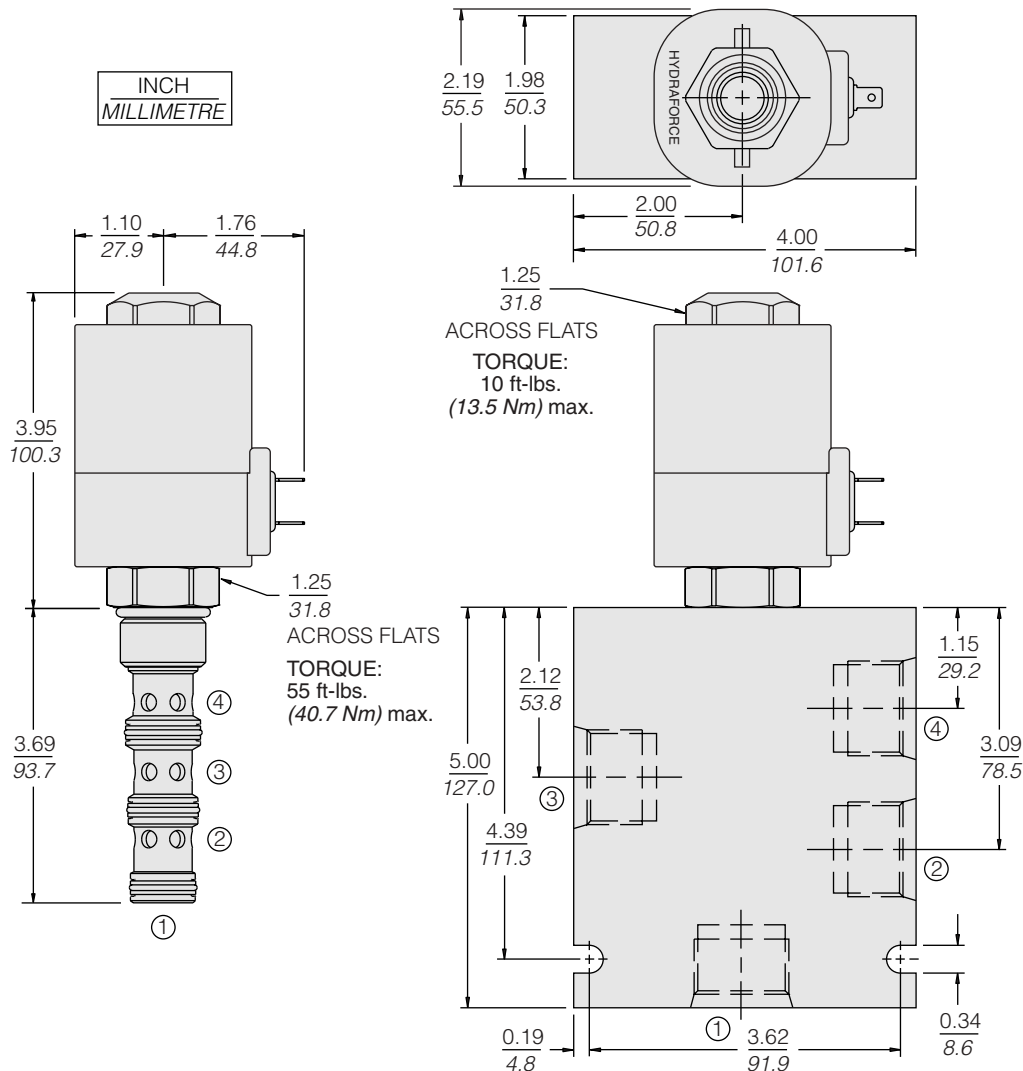
USAS/ISO:



PERFORMANCE (Cartridge Only)



DIMENSIONS



MATERIALS

Cartridge: Weight: 0.39 kg. (0.85 lbs.); Steel with hardened work surfaces. Zinc-plated exposed surfaces; Buna N O-rings and TFE back-ups standard.

Standard Ported Body: Weight: 1.5 kg. (3.3 lbs.); Anodized high-strength 6061 T6 aluminum alloy, rated to 240 bar (3500 psi); See page 8.012.1. Ductile iron and steel bodies available; dimensions may differ; consult factory.

E-Coil: Weight: 1.36 kg. (3.0 lbs.); Fully encapsulated with rugged external metal shell; Rated up to IP69K with integral connectors; See page 3.400.1.

TO ORDER

SV12-41		-		-		-		-	
Porting									
Cartridge Only	0								
SAE 10	10T								
SAE 12	12T								
3/4 in. BSP*	6B								
*BSP Body; U.K. Mfrs. Only									
Seals									
Buna N (Std.)	N								
Fluorocarbon	V								
Terminations (VDC)									
EL	Leadwires (2), IP65 Rated								
ES	Dual Spades, IP65 Rated								
EG	DIN 43650, IP65 Rated								
EW	Leads w/Weather-Pack® Connector, IP65 Rated								
EY	Metri-Pack® 150 Connector, IP69K Rated								
Voltage									
0	Less Coil								
12	12 VDC								
24	24 VDC								
36	36 VDC								
48	48 VDC								
		Coils with internal diode are available. Consult factory.							
		Other coil voltages may be available for OEM applications. Consult factory.							