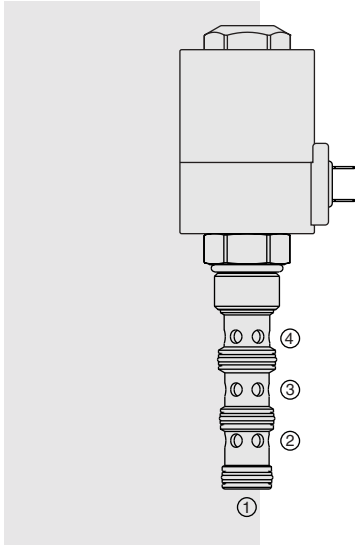


# SOLENOID VALVES

## SV12-40R Spool, 2-Position, 4-Way



### DESCRIPTION

A solenoid-operated, 2-position, 4-way, direct-acting spool-type, screw-in hydraulic cartridge valve.

### OPERATION

When de-energized, the **SV12-40R** allows flow from ② to ①, and from ③ to ④. When energized, the spool shifts to allow flow from ③ to ②, and from ④ to ①.

Note: Consult factory for applications where port ① will be used as an inlet.

### FEATURES

- Continuous-duty rated solenoid.
- Hardened spool and cage for long life.
- Optional coil voltages and terminations.
- All ports may be fully pressurized.
- Manual override option.
- Heavy-duty waterproof E-Coils rated up to IP69K.

### RATINGS

**Operating Pressure:** 240 bar (3500 psi) max.

**Flow:** See Performance Chart

**Leakage:** 410 cc/minute (25 cu. in./minute) at 240 bar (3500 psi)

**Temperature:** -40 to 120°C with Buna N seals

**Coil Duty Rating:** See Chart

**Response Time:** Pull-In: 100 msec; Drop-Out: 100 msec

**Initial Coil Current Draw at 20°C:** 2.8 amps at 12 VDC

**Filtration:** See page 9.010.1

**Fluids:** Mineral-based or synthetics with lubricating properties at viscosities of 7.4 to 420 cSt (50 to 2000 ssu)

**Installation:** No restrictions; See page 9.020.1

**Cavity:** VC12-4; See page 9.112.1

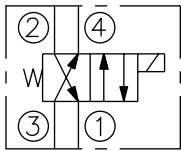
**Cavity Tool:** CT12-4XX; See page 8.600.1

**Seal Kit:** SK12-4X-MMM; See page 8.650.1

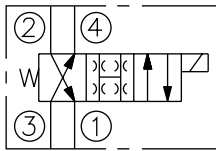
**E-Coil Nut:** Part No. 7085180

### SYMBOLS

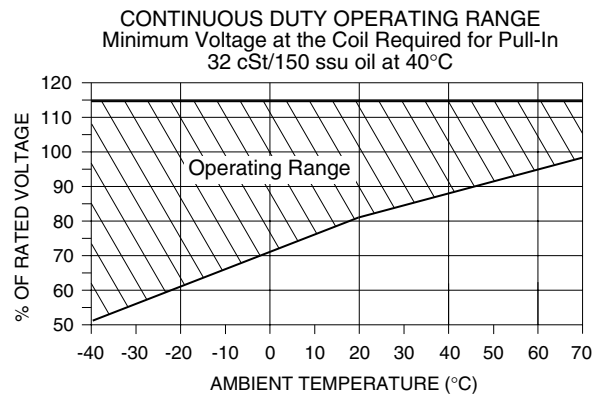
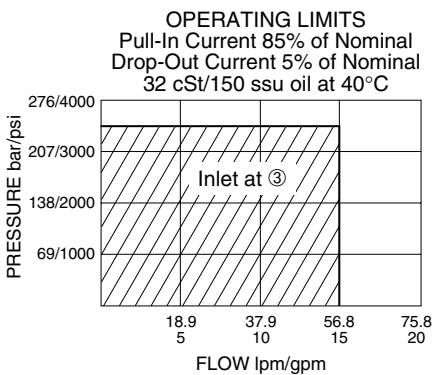
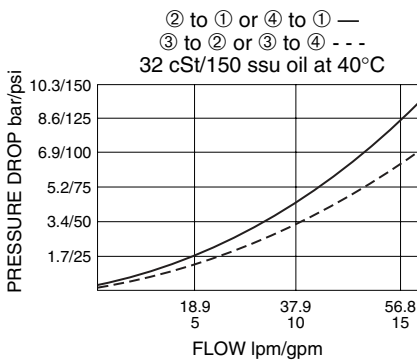
#### USAS/ISO:



#### TRANSITION:

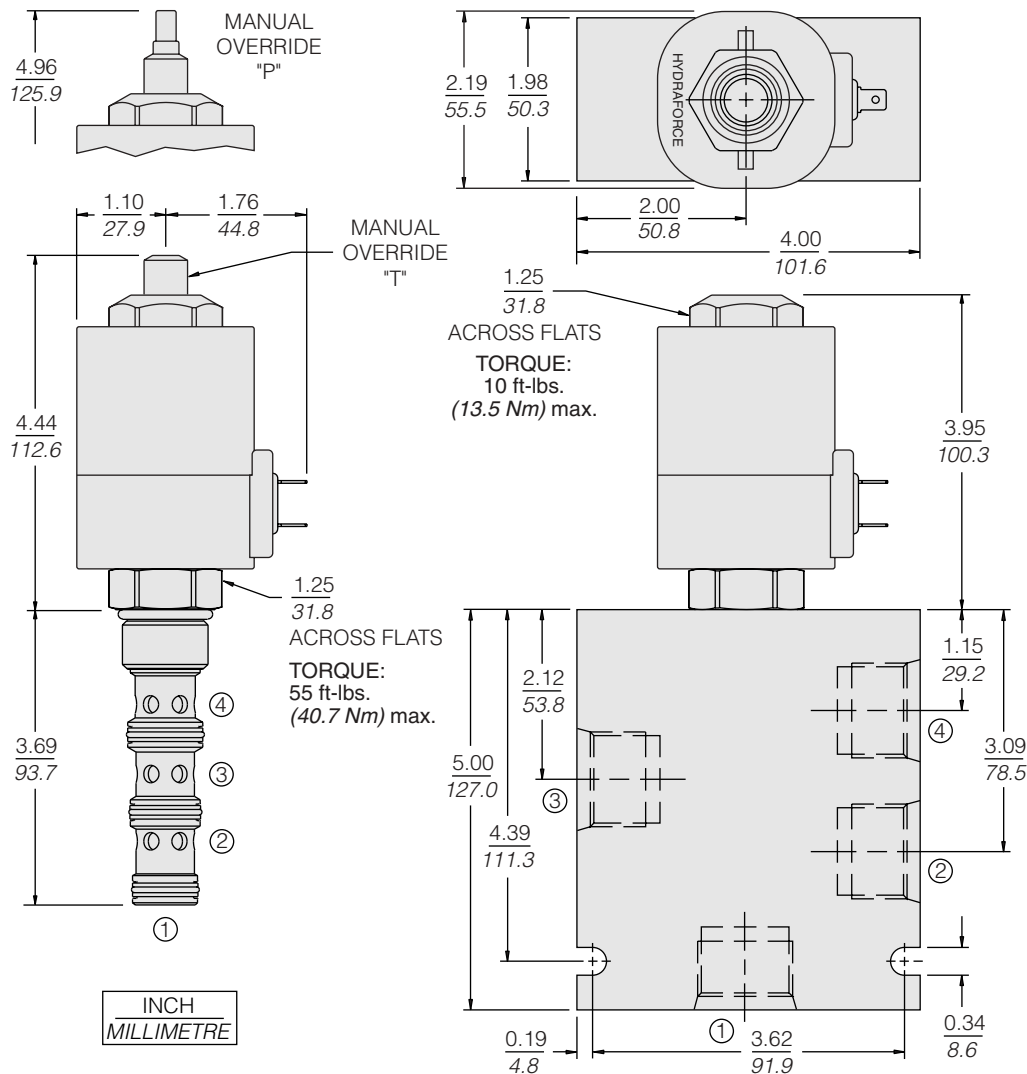


### PERFORMANCE (Cartridge Only)



# SV12-40R

## DIMENSIONS



## MATERIALS

**Cartridge:** Weight: 0.39 kg. (0.85 lbs.); Steel with hardened work surfaces. Zinc-plated exposed surfaces; Buna N O-rings and TFE back-ups standard.

**Standard Ported Body:** Weight: 1.5 kg. (3.3 lbs.); Anodized high-strength 6061 T6 aluminum alloy, rated to 240 bar (3500 psi); See page 8.012.1. Ductile iron and steel bodies available; dimensions may differ; consult factory.

**E-Coil:** Weight: 1.36 kg. (3.0 lbs.); Fully encapsulated with rugged external metal shell; Rated up to IP69K with integral connectors; See page 3.400.1.

## TO ORDER

### SV12-40R

#### Manual Override

None (Blank)  
Option **P**  
Option **T**

#### Porting

Cartridge Only **0**  
SAE 10 **10T**  
SAE 12 **12T**  
3/4 in. BSP\* **6B**

\*BSP Body; U.K. Mfrs. Only

#### Seals

Buna N (Std.) **N**  
Fluorocarbon **V**

#### Terminations (VDC)

**EL** Leadwires (2), IP65 Rated  
**ES** Dual Spades, IP65 Rated  
**EG** DIN 43650, IP65 Rated  
**EW** Leads w/Weather-Pack® Connector, IP65 Rated  
**EY** Metri-Pack® 150 Connector, IP69K Rated

#### Voltage

**0** Less Coil  
**12** 12 VDC  
**24** 24 VDC  
**36** 36 VDC  
**48** 48 VDC

Coils with internal diode are available. Consult factory.

Other coil voltages may be available for OEM applications. Consult factory.