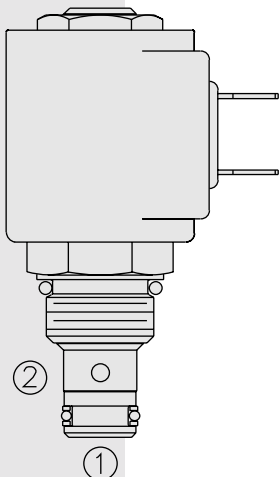


SOLENOID VALVES

SV08-26 Blocking/Low Flow, 2-Way, Normally Closed



DESCRIPTION

A solenoid-operated, 2-way, normally closed, direct-acting, needle-type, screw-in hydraulic cartridge valve, designed to function as a blocking or load-holding device for low flow circuits.

OPERATION

When de-energized, the **SV08-26** blocks flow in both directions, to pressure rating. If pressure on ① exceeds the rating, flow may pass from ① to ②.

When energized, the needle point lifts to open the valve bidirectionally. Port ② is the recommended load-holding port.

Operation of Manual Override Option: To override, push button in, twist counter-clockwise 180° and release. In this position, the valve will remain open.

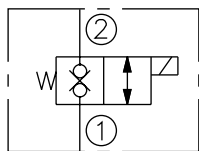
To return to normal operation, push button in, twist clockwise 180° and release. Override will be detented in this position.

FEATURES

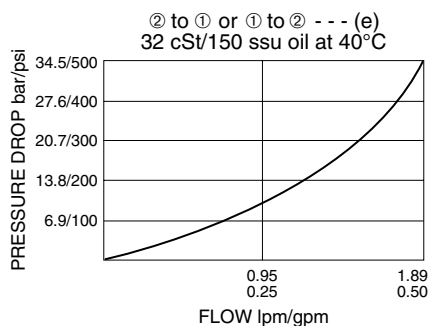
- Continuous-duty rated solenoid.
- Hardened seat for long life and low leakage.
- Optional coil voltages and terminations.
- Cartridges are voltage interchangeable.
- Unitized, molded coil design.
- Industry common cavity.
- Manual override option.
- Optional waterproof E-Coils rated up to IP69K.
- Compact size.

SYMBOLS

USAS/ISO:



PERFORMANCE (Cartridge Only)



RATINGS

Operating Pressure: 207 bar (3000 psi)

Effective Orifice Size: 0.81 mm (0.032 in.)

Internal Leakage: 0.10 cc/minute (3 drops/minute) max. at 207 bar (3000 psi)

Temperature: -40 to 120°C with standard Buna seals

Coil Duty Rating: Continuous from 85% to 115% of nominal voltage

Response Time: First indication of change of state with 100% voltage supplied at 80% of nominal flow rating (② to ① direction):
Energized: 16 msec.; De-energized: 10 msec.

Initial Coil Current Draw at 20°C: Standard Coil: 1.2 amps at 12 VDC; 0.13 amps at 115 VAC (full wave rectified). E-Coil: 1.4 amps at 12 VDC; 0.7 amps at 24 VDC

Minimum Pull-in Voltage: 85% of nominal at 207 bar (3000 psi)

Filtration: See page 9.010.1

Fluids: Mineral-based or synthetics with lubricating properties at viscosities of 7.4 to 420 cSt (50 to 2000 ssu)

Installation: No restrictions; See page 9.020.1

Cavity: VC08-2; See page 9.108.1

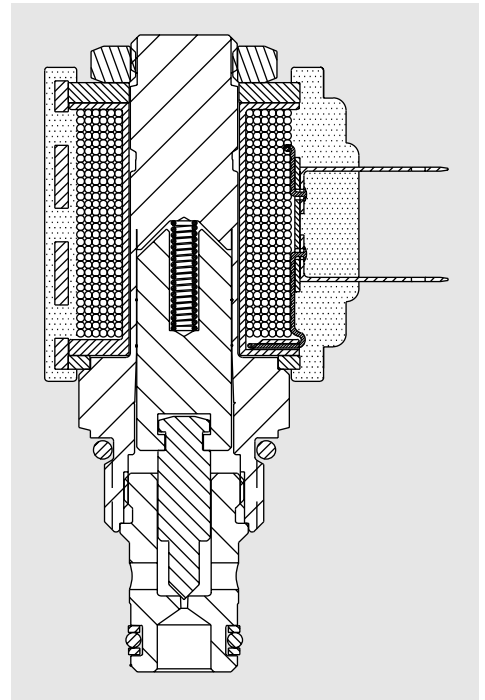
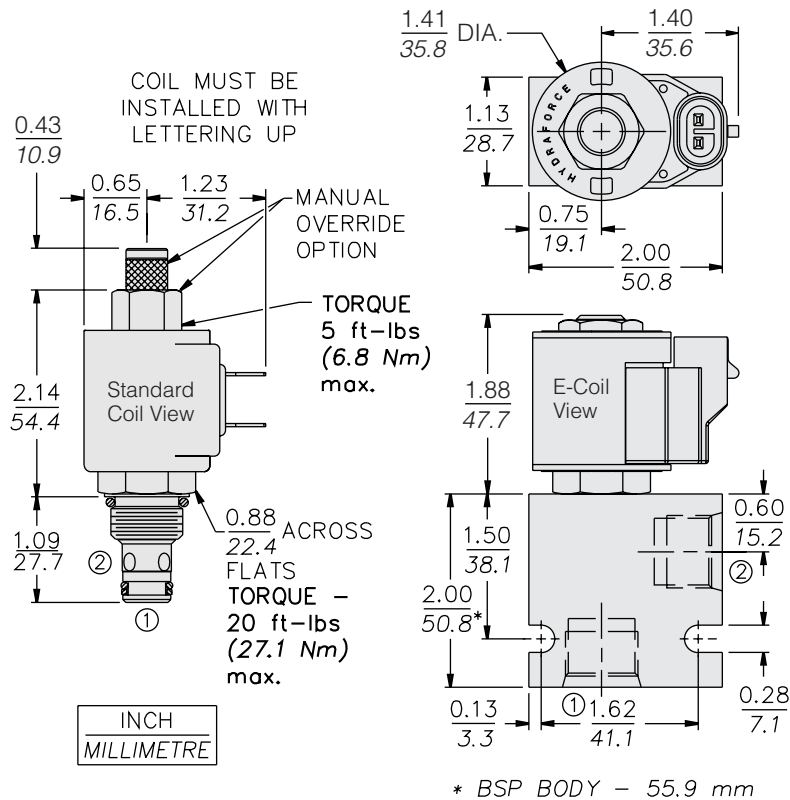
Cavity Tool: CT08-2XX; See page 8.600.1

Seal Kit: SK08-2X-M; See page 8.650.1

Coil Nut: Part No. 7004400;

For E-coils manufactured prior to 1-1-04, see page 3.400.1 for coil nut info.

DIMENSIONS



MATERIALS

Cartridge: Weight: 0.09 kg. (0.20 lbs.); Steel with hardened work surfaces. Zinc-plated exposed surfaces; Buna N O-rings and back-up standard.

Standard Ported Body: Weight: 0.16 kg. (0.35 lbs.); Anodized high-strength 6061 T6 aluminum alloy, rated to 240 bar (3500 psi); See page 8.008.1. Ductile iron and steel bodies available; dimensions may differ; consult factory.

Standard Coil: Weight: 0.11 kg. (0.25 lbs.); Unitized thermoplastic encapsulated, Class H high temperature magnetwire; See page 3.200.1.

E-Coil: Weight: 0.14 kg. (0.3 lbs.); Fully encapsulated with rugged external metal shell; Rated up to IP69K with integral connectors; **Note: See page 3.400.1 for all E-Coil retrofit applications.**

TO ORDER

SV08-26			
Option		Voltage	Termination (VDC)
None (Blank)		Std. Coil	Std. Coil
Manual Override	M	0 Less Coil**	DS Dual Spades
Screen	S	10 10 VDC†	DG DIN 43650
		12 12 VDC	DL Leadwires (2)
Porting		24 24 VDC	DL/W Leads w/Weatherpak® Connectors
Cartridge Only	0	36 36 VDC	DR Deutsch DT04-2P
SAE 4	4T	48 48 VDC	
SAE 6	6T	24 24 VAC	Termination (VAC)
SAE 8	8T	115 115 VAC	Std. Coil
1/4 in. BSP*	2B	230 230 VAC	AG DIN 43650
3/8 in. BSP*	3B		AP 1/2 in. Conduit
1/2 in. BSP*	4B		Termination (VDC)
*BSP Body			E-Coil
U.K. Mfr. Only			ER Deutsch DT04-2P (IP69K Rated)
Seals		E-Coil	EY Metri-Pack® 150 (IP69K Rated)
Buna N (Std.)	N	10 10 VDC	
Fluorocarbon	V	12 12 VDC	
		20 20 VDC	
		24 24 VDC	

**Includes Std. Coil Nut

† DS, DW or DL terminations only

Coils with internal diode are available. Consult factory.