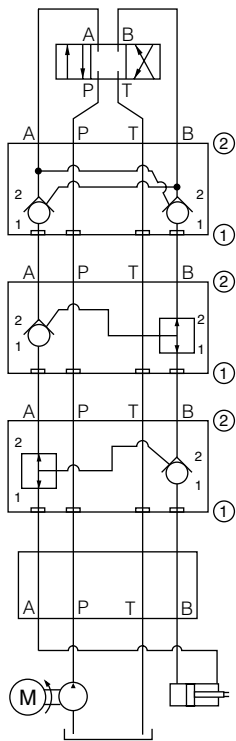
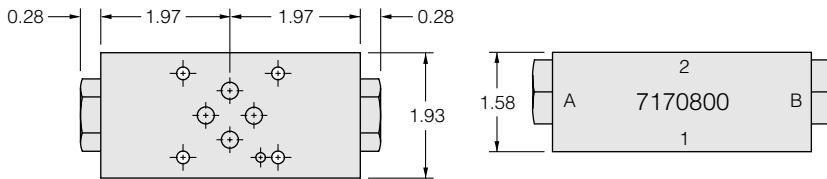


# D03 (NG6) SANDWICH VALVES

## Directional Sandwich Valves

HydraForce's broad range of directional cartridge valves in sandwich format offers unique opportunities to the system designer.

All products are rated to 210 bar (3000 psi) and are made with hardened working parts to assure long, trouble-free operation.



### Dual P.O. Check

Side Up: 2  
Block No.: 7170800

### Model No. DCV08-S03K-x

Plug: None  
Plug Side: n/a  
Seal Plate: No  
Max Flow: 8 gpm

Catalog Ref.: 4.250.1  
Piston:

### P.O. Check on A

Side Up: 2  
Block No.: 7170800

### Model No. PCV08-S03I-x

Plug: 5294000  
Plug Side: B  
Seal Plate: No  
Max. Flow: 8 gpm

Catalog Ref.: None  
Piston:

### P.O. Check on B

Side Up: 2  
Block No.: 7170800

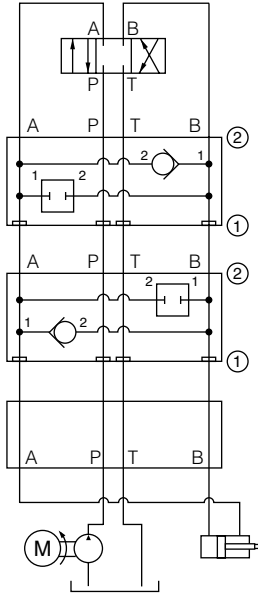
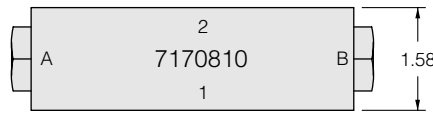
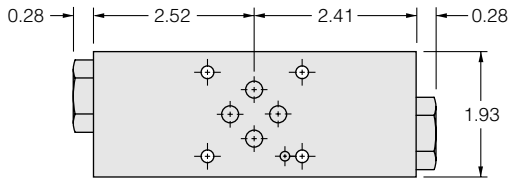
### Model No. PCV08-S03J-x

Plug: 5294000  
Plug Side: A  
Seal Plate: No  
Max. Flow: 8 gpm

Catalog Ref.: None  
Piston:

### ISO/CETOP 3 Manifold

# Directional Sandwich Valves

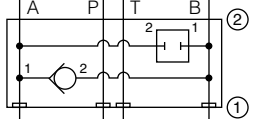


**Flow Checked Out, A Freeflow from B**

Side Up: 2  
Block No.: 7170810  
Plug: CP10-20-x  
Plug Side: B

**Model No. CV10-20-S03E-x-xx**

Seal Plate: No  
Catalog Ref.: 4.011.1



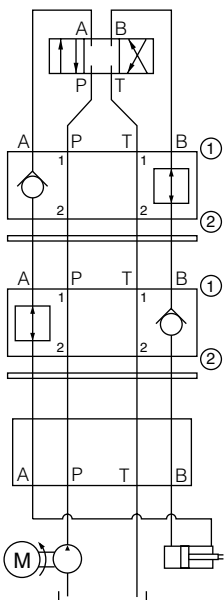
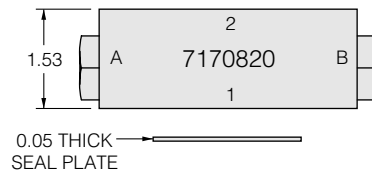
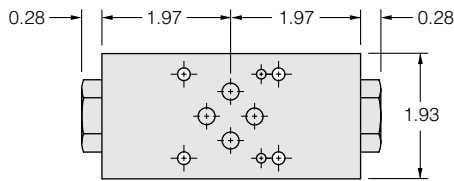
**Flow Checked Out, B Freeflow from A**

Side Up: 2  
Block No.: 7170810  
Plug: CP10-20-x  
Plug Side: A

**Model No. CV10-20-S03F-x-xx**

Seal Plate: No  
Catalog Ref.: 4.011.1

**ISO/CETOP 3 Manifold**



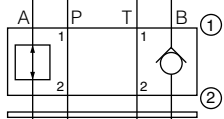
**Flow Checked In A**

Side Up: 1  
Block No.: 7170820

**Model No. CV10-20-S03A-x-xx**

Plug: 6103010  
Plug Side: B  
Seal Plate: Yes  
Max Flow:

Catalog Ref.: 4.011.1



**Flow Checked In B**

Side Up: 1  
Block No.: 7170820

**Model No. CV10-20-S03B-x-xx**

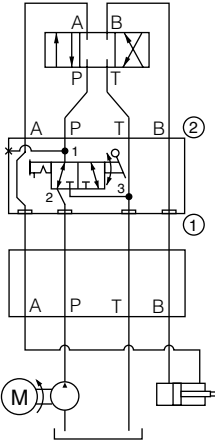
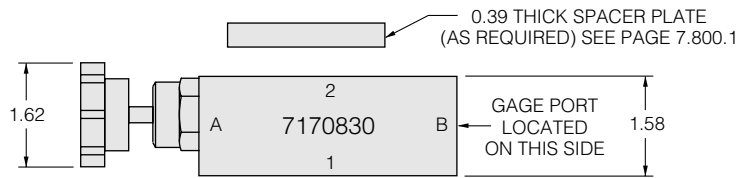
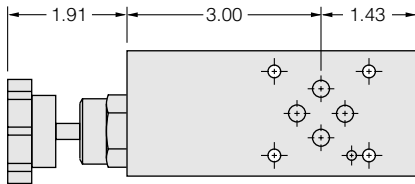
Plug: 6103010  
Plug Side: A  
Seal Plate: Yes  
Max. Flow:

Catalog Ref.: 4.011.1

**ISO/CETOP 3 Manifold**

# D03 (NG6) SANDWICH VALVES

## Directional Sandwich Valves



### Manual Rotary Selector on P Model No. MR10-31-S030-x

Side Up: 2

Plug: None

Seal Plate: No

Catalog Ref.: 4.774.1

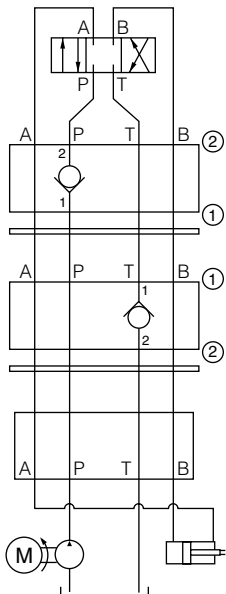
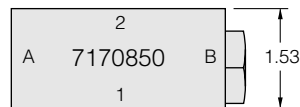
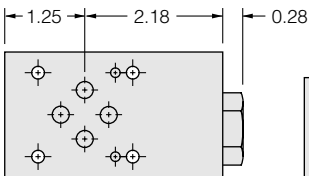
Block No.: 7170830

Plug Side: n/a

Max Flow: 10 gpm

Note: Knob Kit part no. 5341010 ordered separately; see catalog page 4.770.1

### ISO/CETOP 3 Manifold



### Flow Checked Out P Model No. CV10-20-S03P-x-xx

Side Up: 2

Plug: None

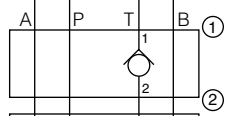
Seal Plate: Yes

Catalog Ref.: 4.011.1

Block No.: 7170850

Plug Side: n/a

Max Flow:



### Flow Checked Out T Model No. CV10-20-S03T-x-xx

Side Up: 1

Plug: None

Seal Plate: Yes

Catalog Ref.: 4.011.1

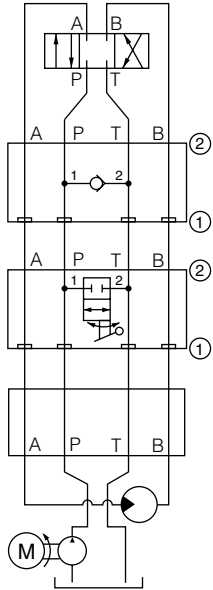
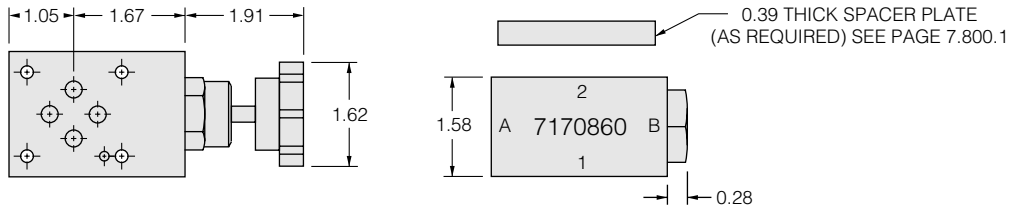
Block No.: 7170850

Plug Side: n/a

Max. Flow:

### ISO/CETOP 3 Manifold

# Directional Sandwich Valves



### Anti-Cav Check P to T

**Model No. CV10-21-S03S-x-04**

Side Up: 2

Plug: None

Seal Plate: No

Catalog Ref.: 4.019.1

Block No.: 7170860

Plug Side: n/a

### Manual Rotary Unload P to T

**Model No. MR10-20x-S03S-x**

Side Up: 2

Plug: None

Seal Plate: No

Catalog Ref.: 5.013.1

Block No.: 7170860

Plug Side: n/a

Max. Flow: 13 gpm

Note: Handle Kit part no. 5341010 ordered separately. Back pressure on P may require use of Spacer Plate(s).

### ISO/CETOP 3 Manifold