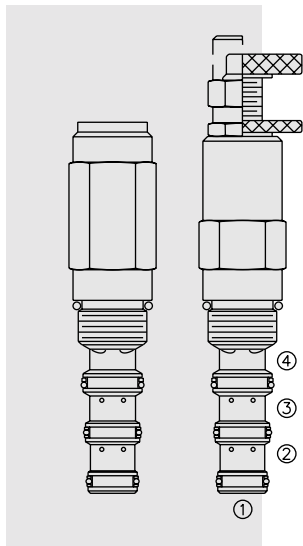


UP10-40 Piloted Unloading Valve



DESCRIPTION

A screw-in, cartridge-style, remote sequence, piloted unloading valve with optional fixed unload/reload pressure ratios of 60%, 70% or 80%, for use in accumulator-type hydraulic systems..

OPERATION

In its steady state, the **UP10-40** blocks flow from ② to ③. On attainment of a pre-determined pressure at ①, the spool shifts to allow flow from ② to ③. The spring chamber is vented to ④.

If pressure at ① drops to a level below the ratio-established reload value, the valve will close, blocking flow from ② to ③.

FEATURES

- Adjustments cannot be backed out of the valve.
- Adjustments prohibit springs from going solid.
- Hardened precision spool and cage for long life.
- Industry common cavity.

RATINGS

Operating Pressure: 206 bar (3000 psi) with standard Buna N seals

Flow: 3.8 lpm (1 gpm); See Performance Chart

Pressure Setting Range: 69 to 207 bar (1000 to 3000 psi)

Loading and Unloading Ratios: 60% \pm 5%, 70% \pm 5%, 80% \pm 5%

Temperature: -40 to 120°C with standard Buna seals

Filtration: See page 9.010.1

Fluids: Mineral-based or synthetics with lubricating properties at viscosities of 7.4 to 420 cSt (50 to 2000 sus)

Installation: No restrictions; See page 9.020.1

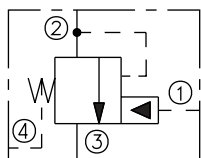
Cavity: VC10-4; See page 9.110.1

Cavity Tool: CT10-4XX; See page 8.600.1

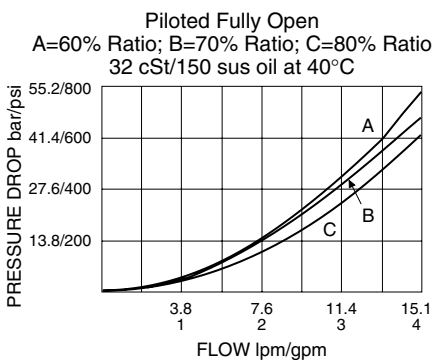
Seal Kit: SK10-4X-MMM; See page 8.650.1

SYMBOLS

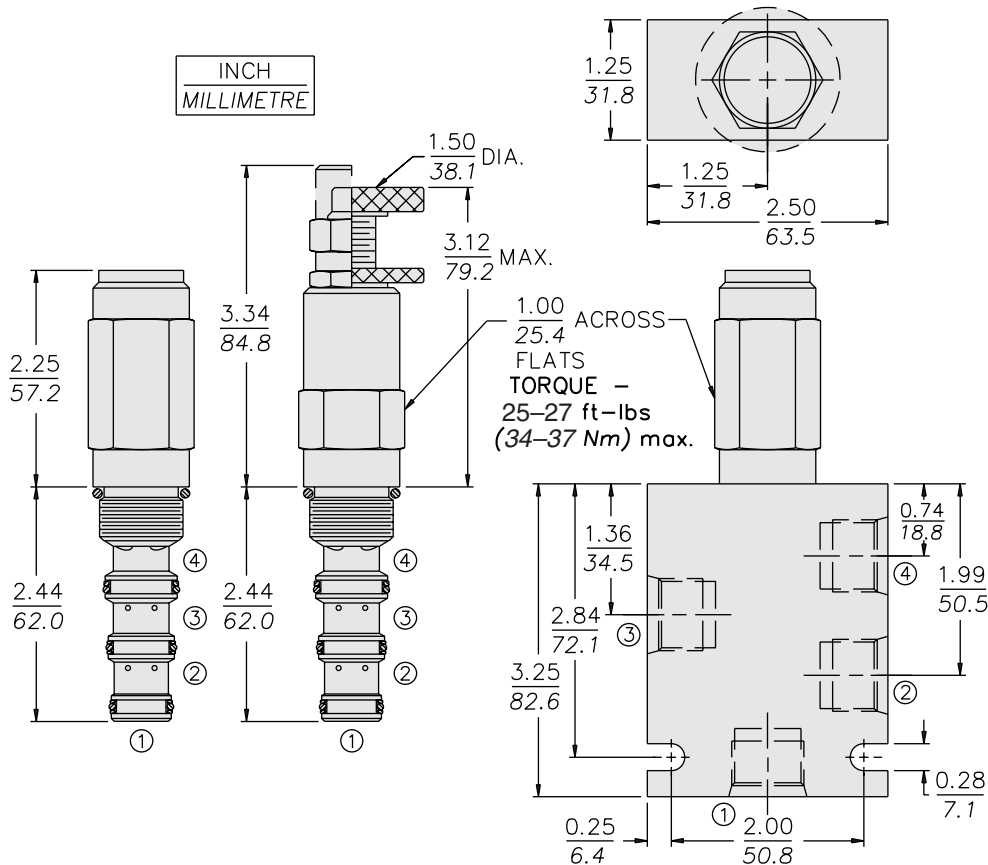
USASI/ISO:



PERFORMANCE (Cartridge Only)



DIMENSIONS



MATERIALS

Cartridge: Weight: 0.34 kg. (0.70 lbs.); Steel with hardened work surfaces. Zinc-plated exposed surfaces. Buna N O-rings and polyester elastomer back-ups standard. Anodized aluminum knobs and caps.

Standard Ported Body: Weight: 0.34 kg. (0.70 lbs.); Anodized high-strength 6061 T6 aluminum alloy, rated to 240 bar (3500 psi); see page 8.010.1. Ductile iron and steel bodies available; dimensions may differ; consult factory.

TO ORDER

UP10-40 - - - - 30 /

Adjustment Option

- 1/4 in. Hex Allen Head **A**
- 1-1/2 in. Dia. Alum Knob **B**
- Option A w/Cover Cap **C**
- Factory Preset Non-Adj. **F**
- Factory Preset Hidden Adj. **H**
- Option C w/ Lockwire Holes **L**

Porting

- Cartridge Only **0**
- SAE 6 **6T**
- SAE 8 **8T**
- 1/4 in. BSP* **2B**
- 3/8 in. BSP* **3B**

*BSP Body; U.K. Mfr. Only

Seals

- Buna N (Std.) **N**
- Fluorocarbon **V**

Setting in bar[†]

- (Blank) for Adjustable, or Specify, for example: **M25** 25 bar
- M100** 100 bar

Setting in psi[†]

- (Blank) for Adjustable, or Specify, for example: **9.0** 900 psi
- 21.0** 2100 psi

[†]Adjustable valves will be preset to approx. 50% of spring max. potential.

Pressure Ratio

- 60** 60% Ratio
- 70** 70% Ratio
- 80** 80% Ratio