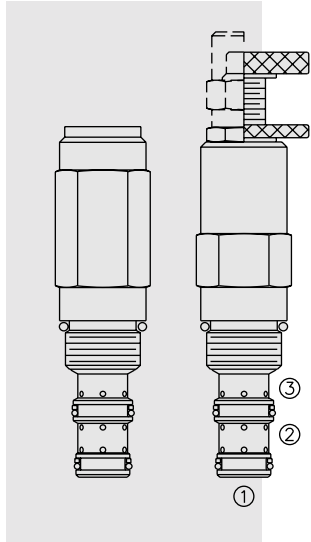
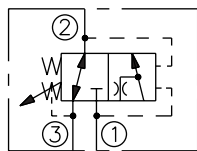


KS10-30 Kick-Down, Sequence, Internal Pilot

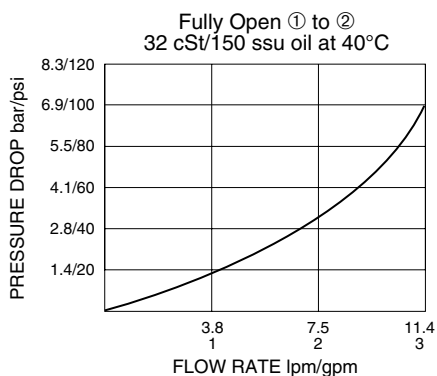


SYMBOLS

USAS/ISO:



PERFORMANCE (Cartridge Only)



DESCRIPTION

A screw-in, cartridge-style, direct-acting, spool-type, hydraulic sequence valve with internal pilot and spring chamber drain, designed to direct flow to a secondary circuit once a pre-determined pressure level is attained in the primary circuit. The valve will remain shifted until the pressure in the secondary circuit falls below a lower pressure setting determined by a second spring.

OPERATION

In its steady state, the **KS10-30** blocks flow at ①, while allowing flow to pass from ② to ③.

On attainment of a pre-determined pressure at ①, the cartridge shifts to open ① to ②. The ① to ② flow path will remain open until the pressure in the secondary circuit falls below a lower pressure setting determined by a second spring.

Note: Primary spring setting should be greater than secondary spring value.

FEATURES

- Adjustments cannot be backed out of the valve.
- Adjustments prohibit springs from going solid.
- Optional spring ranges to 207 bar (3000 psi).
- Hardened spool and cage for long life.
- Industry common cavity.

RATINGS

Operating Pressure: 207 bar (3000 psi)

Flow: See Performance Chart

Internal Leakage ① to ②: 82 cc/minute (5 cu. in./minute) max. to 85% of nominal setting

Crack Pressure Defined: bar (psi) evident at ① when 0.95 lpm (0.25 gpm) attained ① to ②

Standard Spring Ranges (Primary Spring):

10 to 103 bar (150 to 1500 psi); 27.6 to 207 bar (400 to 3000 psi)

Standard Spring Setting (Optional Secondary Spring):

7 bar (100 psi); 10 bar (150 psi); 14 bar (200 psi); 17 bar (250 psi)

Temperature: -40 to 120°C with standard Buna seals

Filtration: See page 9.010.1

Fluids: Mineral-based or synthetics with lubricating properties at viscosities of 7.4 to 420 cSt (50 to 2000 ssu)

Installation: No restrictions; See page 9.020.1

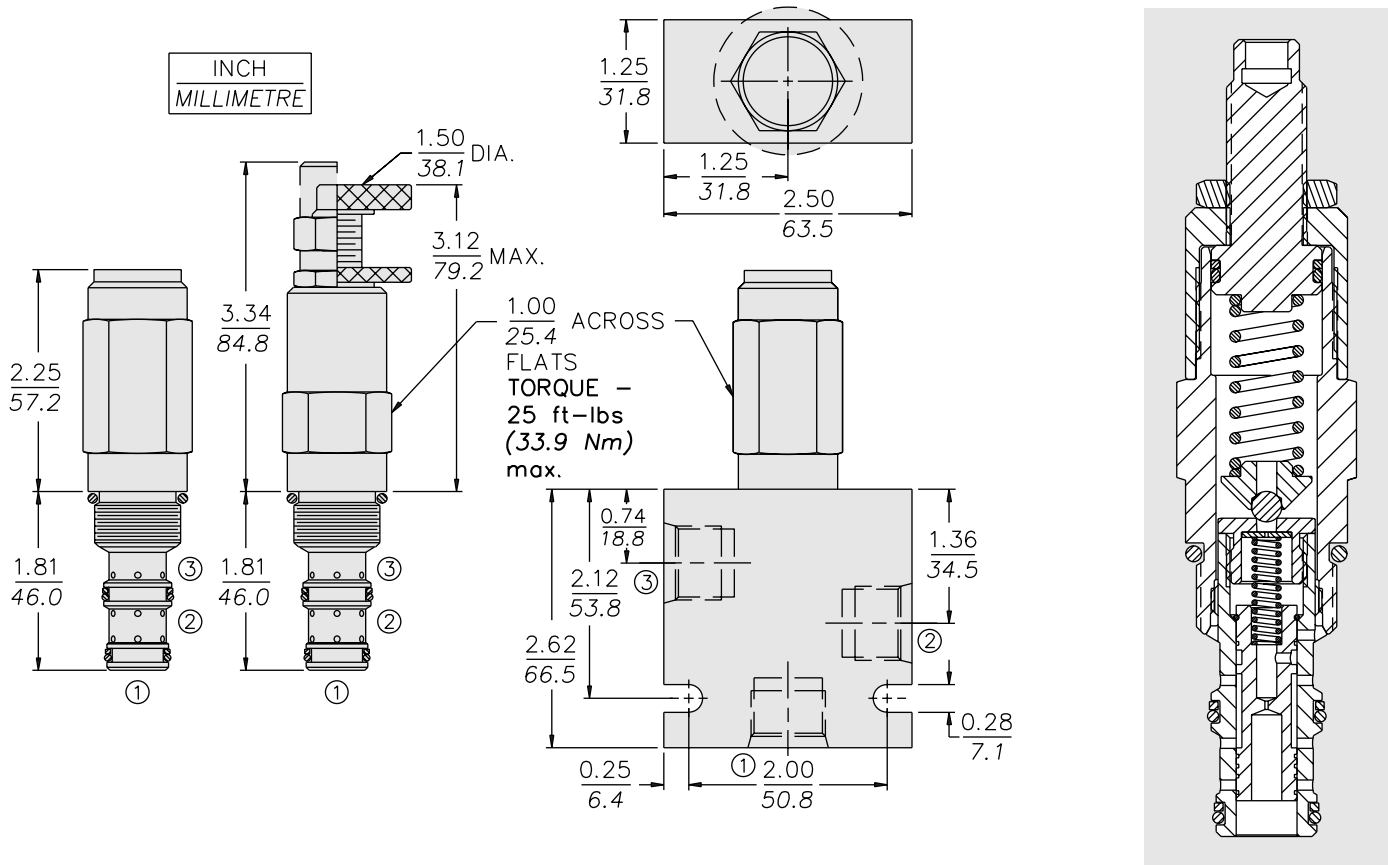
Cavity: VC10-3; See page 9.110.1

Cavity Tool: CT10-3XX; See page 8.600.1

Seal Kit: SK10-3X-BB; See page 8.650.1

KS10-30

DIMENSIONS



MATERIALS

Cartridge: Weight: 0.27 kg. (0.60 lbs.); Steel with hardened work surfaces. Zinc-plated exposed surfaces. Buna N O-rings and polyester elastomer back-ups standard. Anodized aluminum knobs and caps.

Standard Ported Body: Weight: 0.36 kg. (0.80 lbs.); Anodized high-strength 6061 T6 aluminum alloy, rated to 240 bar (3500 psi); see page 8.010.1. Ductile iron and steel bodies available; dimensions may differ; consult factory.

TO ORDER

KS10-30

Adjustment Option

- 1/4 in. Hex Allen Head **A**
- 1-1/2 in. Dia. Alum Knob **B**
- Option A w/Cover Cap **C**
- Factory Preset Non-Adj. **F**
- Factory Preset Hidden Adj. **H**
- Option C w/ Lockwire Holes **L**

Porting

- Cartridge Only **0**
- SAE 6 **6T**
- SAE 8 **8T**
- 1/4 in. BSP* **2B**
- 3/8 in. BSP* **3B**

Seals

- Buna N (Std.) **N**
- Fluoro-carbon **V**

Primary Spring Setting[‡]

- (Blank) for Adjustable, or Specify, for example:
- 9.0** 900 psi
- 21.0** 2100 psi

Secondary Spring Setting

- A** 7 bar (100 psi)
- B** 10 bar (150 psi)
- C** 14 bar (200 psi)
- D** 17 bar (250 psi)

Primary Spring Range

- 15** 10 to 103 bar (150 to 1500 psi)
- 30** 27.6 to 207 bar (400 to 3000 psi)

*BSP Body; U.K. Mfr. Only

[‡]Adjustable valves will be preset to approx. 50% of spring max. potential.