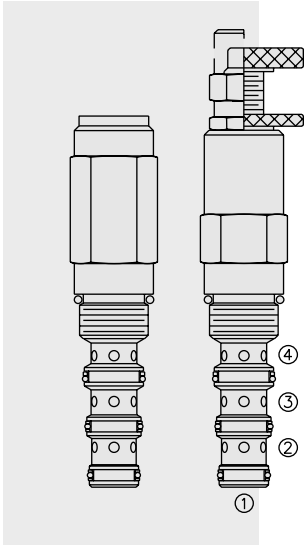


# PRESSURE CONTROLS

## PS10-40 / PS50-40 Sequence, Normally Closed . . .



### DESCRIPTION

A screw-in, cartridge-style, direct-acting, spool-type, hydraulic sequence valve with external pilot and spring chamber drain. It is designed to function as a pressure-signalled, remote pilot-operated, two-way, normally closed valve. A separate spring chamber drain galley allows port ③ or ② to be fully pressurized.

### OPERATION

In neutral (unpiloted), the **PS10-40 / PS50-40** blocks flow between ③ and ② bidirectionally.

The spring chamber is constantly vented at ④. On attainment of a pre-determined pressure at ①, the cartridge shifts to open ③ to ② bidirectionally.

### FEATURES

- Adjustments cannot be backed out of the valve.
- Adjustments prohibit springs from going solid.
- Optional spring ranges to 151.7 bar (2200 psi).
- Hardened precision spool and cage for long life.
- Industry common cavity.

### RATINGS

**Operating Pressure:** PS10-40: 240 bar (3500 psi); PS50-40: 345 bar (5000 psi)

**Flow:** See Performance Chart

**Internal Leakage:** 82 cc/minute (5 cu. in./minute) max. to 85% of nominal setting

**Spring Ranges:** 2.8 to 27.6 bar (40 to 400 psi); 15.2 to 151.7 bar (220 to 2200 psi)

**Temperature:** -40 to 120°C with standard Buna seals

**Filtration:** See page 9.010.1

**Fluids:** Mineral-based or synthetics with lubricating properties at viscosities of 7.4 to 420 cSt (50 to 2000 ssu)

**Installation:** No restrictions; See page 9.020.1

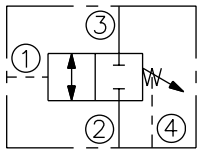
**Cavity:** VC10-4; See page 9.110.1

**Cavity Tool:** CT10-4XX; See page 8.600.1

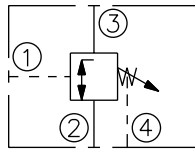
**Seal Kit:** SK10-4X-BMM; See page 8.650.1

### SYMBOLS

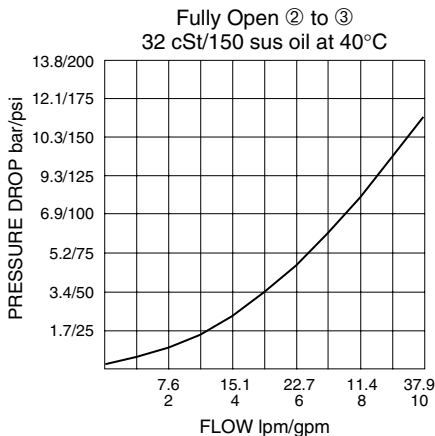
#### USASI:



#### ISO:



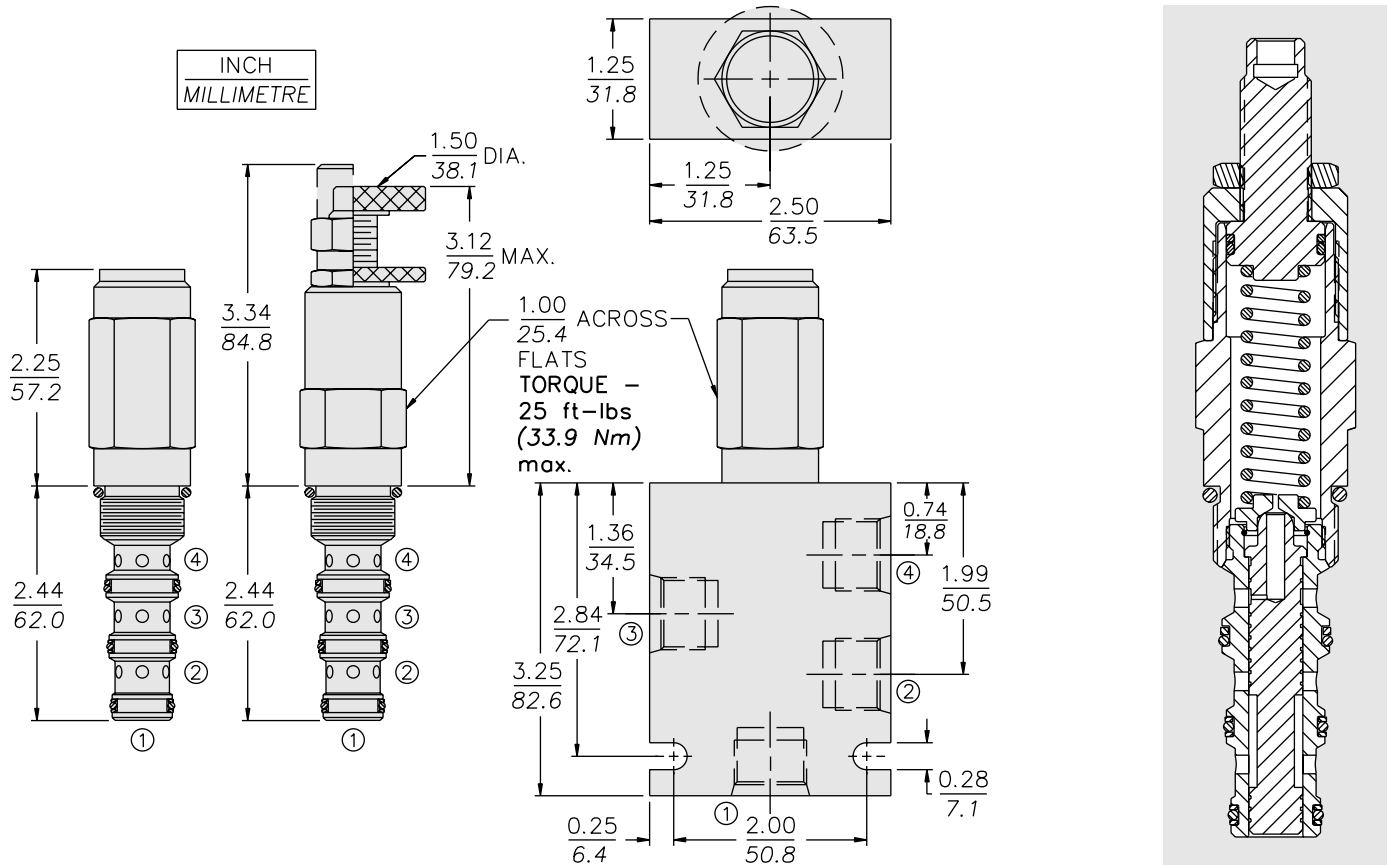
### PERFORMANCE (Cartridge Only)



# with External Pilot and Drain

# PS10-40 / PS50-40

## DIMENSIONS

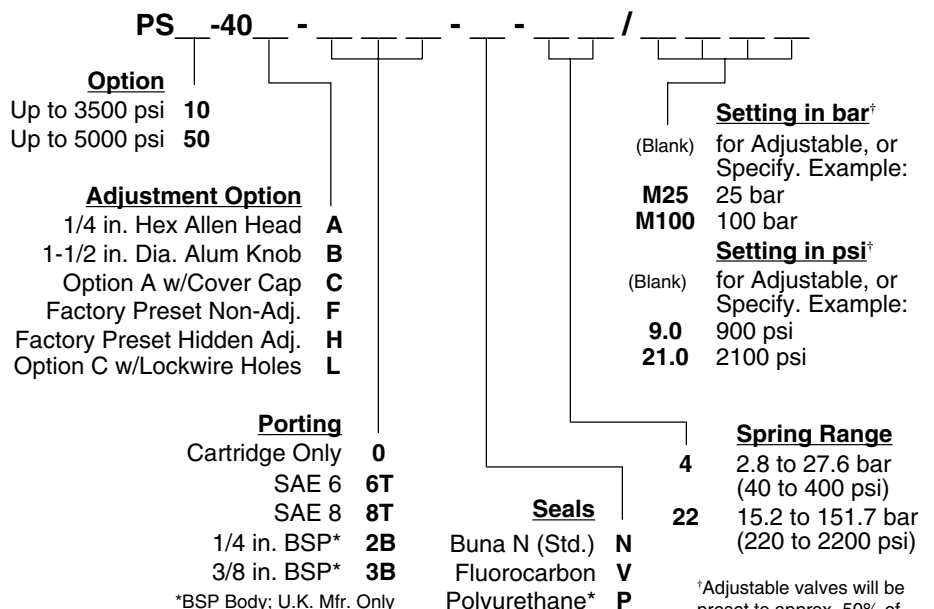


## MATERIALS

**Cartridge:** Weight: 0.34 kg. (0.70 lbs.); Steel with hardened work surfaces. Zinc-plated exposed surfaces. Buna N O-rings and polyester elastomer back-ups standard. Anodized aluminum knobs and caps.

**Standard Ported Body:** Weight: 0.34 kg. (0.70 lbs.); Anodized high-strength 6061 T6 aluminum alloy, rated to 240 bar (3500 psi); See page 8.010.1. Steel or Ductile Iron body required for operation over 241 bar (3500 psi), dimensions may differ; consult factory.

## TO ORDER



Note: Steel or Ductile Iron body required for operation over 241 bar (3500 psi).

\*Required for operation over 241 bar (3500 psi)

<sup>†</sup>Adjustable valves will be preset to approx. 50% of spring max. potential.