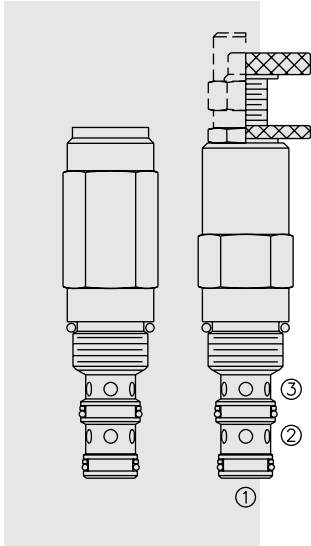


PRESSURE CONTROLS

PS50-36 Pilot-Operated Sequence, Internal Pilot,



DESCRIPTION

A screw-in, cartridge-style, direct-acting, spool-type, hydraulic sequence valve with internal pilot and spring chamber drain.

OPERATION

In its steady state, the **PS50-36** blocks flow from ① to ②, with the spring chamber drained at ③.

On attainment of a predetermined pressure at ①, the cartridge shifts to open ① to ②.

Note that back-pressure on ③ adds to the spring setting value.

FEATURES

- Adjustments cannot be backed out of the valve.
- Adjustments prohibit springs from going solid.
- Spring range to 345 bar (5000 psi).
- Hardened spool and cage for long life.
- Industry common cavity.

RATINGS

Operating Pressure: 345 bar (5000 psi) on ports ① and ②; 240 bar (3500 psi) on port ③

Sequence Pressure Max.: 345 bar (5000 psi)

Flow: See Performance Chart

Internal Leakage: 82 cc/minute (5 cu. in./minute) max. to 85% of nominal setting

Pilot Orifice: Pilot-operated through 0.51 mm (0.20 inch) hole

Crack Pressure Defined: bar (psi) evident at 0.95 lpm (0.25 gpm) attained ① to ②

Standard Spring Range: 20 to 345 bar (300 to 5000 psi)

Temperature: -40 to 120°C with standard Buna seals

Filtration: See page 9.010.1

Fluids: Mineral-based or synthetics with lubricating properties at viscosities of 7.4 to 420 cSt (50 to 2000 ssu)

Installation: No restrictions; See page 9.020.1

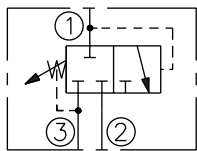
Cavity: VC10-3; See page 9.110.1

Cavity Tool: CT10-3XX; See page 8.600.1

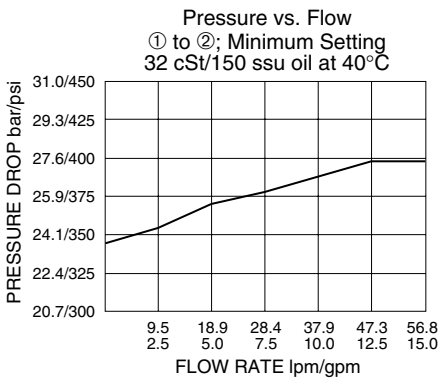
Seal Kit: SK10-3P-BM; See page 8.650.1

SYMBOLS

USASI/ISO:



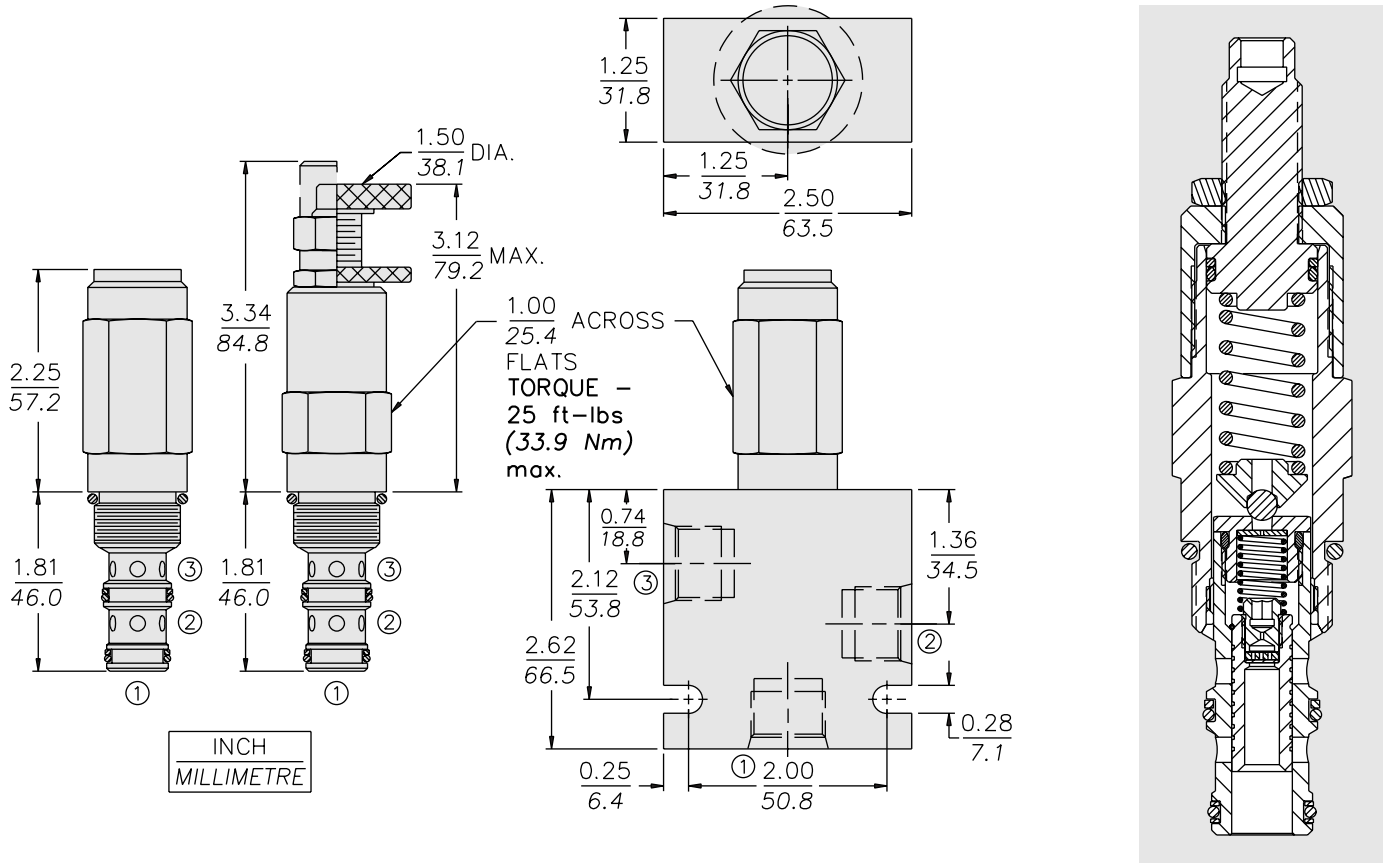
PERFORMANCE (Cartridge Only)



External Drain

PS50-36

DIMENSIONS



MATERIALS

Cartridge: Weight: 0.27 kg. (0.60 lbs.); Steel with hardened work surfaces. Zinc-plated exposed surfaces. Polyurethane O-rings and polyester elastomer back-ups standard. Anodized aluminum knobs and caps.

Ported Body: Weight: 0.64 kg. (1.41 lbs.); Steel, zinc-plated (code "S"); or **Ductile Iron (code "D")** standard, consult factory for weight, dimensions may differ; rated to 345 bar (5000 psi); See page 8.010.1.

TO ORDER

PS50-36

Adjustment Option

- 1/4 in. Hex Allen Head **A**
- 1-1/2 in. Dia. Alum Knob **B**
- Option A w/Cover Cap **C**
- Factory Preset Non-Adj. **F**
- Factory Preset Hidden Adj. **H**
- Option C w/ Lockwire Holes **L**

Porting

- Cartridge Only **0**
- SAE 6 (Ductile) **6TD**
- SAE 6 (Steel) **6TS**

Seals

- Polyurethane **P**

Setting in bar[†]

- (Blank) for Adjustable, or Specify, for example: **M25** 25 bar
- M100** 100 bar

Setting in psi[†]

- (Blank) for Adjustable, or Specify, for example: **9.0** 900 psi
- 21.0** 2100 psi

[†]Adjustable valves will be preset to approx. 50% of spring max. potential.

Spring Range

- 20 to 345 bar (300 to 5000 psi)