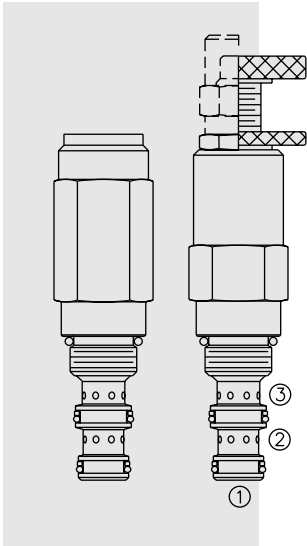


# PRESSURE CONTROLS

## PS08-32 Sequence, External Pilot, Internal Drain



### DESCRIPTION

A screw-in, cartridge-style, direct-acting, spool-type, hydraulic sequence valve with external pilot and internal spring chamber drain.

### OPERATION

In its steady state, the **PS08-32** blocks flow from ③ to ②. On attainment of a pre-determined pressure at ①, the valve shifts to open ③ to ②.

Back pressure at ② will have a direct (1:1) effect on the valve's setting because the spring chamber is vented out ②.

### FEATURES

- Adjustments cannot be backed out of the valve.
- Adjustments prohibit springs from going solid.
- Optional spring ranges to 165.5 bar (2400 psi).
- Hardened spool and cage for long life.
- Compact size.

### RATINGS

**Operating Pressure:** 240 bar (3500 psi)

**Flow:** See Performance Chart

**Internal Leakage:** 82 cc/minute (5 cu. in./minute) max. to 90% of nominal setting

**Standard Spring Ranges:**

- 3.4 to 20.7 bar (50 to 300 psi);
- 6.9 to 41.4 bar (100 to 600 psi);
- 10.3 to 89.7 bar (150 to 1300 psi);
- 20.7 to 165.5 bar (300 to 2400 psi)

**Temperature:** -40 to 120°C with standard Buna seals

**Filtration:** See page 9.010.1

**Fluids:** Mineral-based or synthetics with lubricating properties at viscosities of 7.4 to 420 cSt (50 to 2000 ssu)

**Installation:** No restrictions; See page 9.020.1

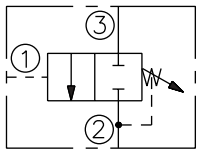
**Cavity:** VC08-3; See page 9.108.1

**Cavity Tool:** CT08-3XX; See page 8.600.1

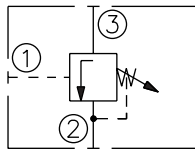
**Seal Kit:** SK08-3X-TB; See page 8.650.1

### SYMBOLS

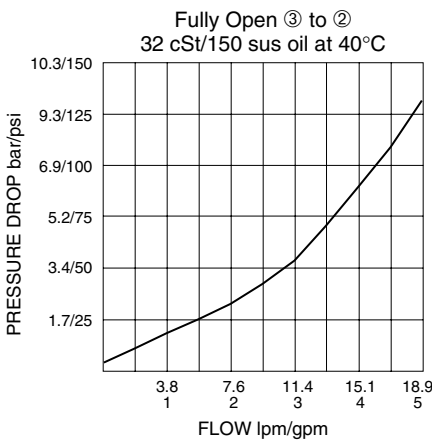
USASI:



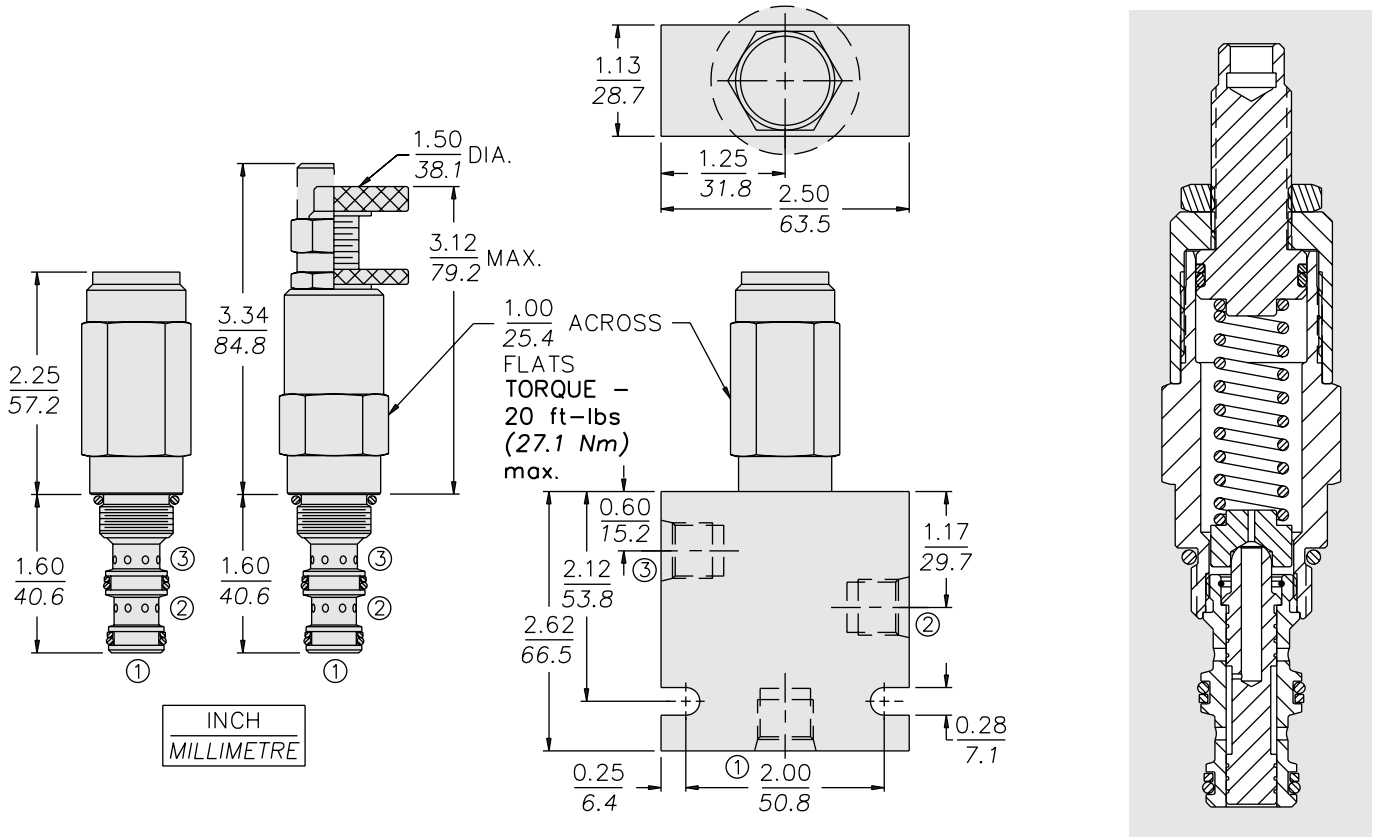
ISO:



### PERFORMANCE (Cartridge Only)



**DIMENSIONS**

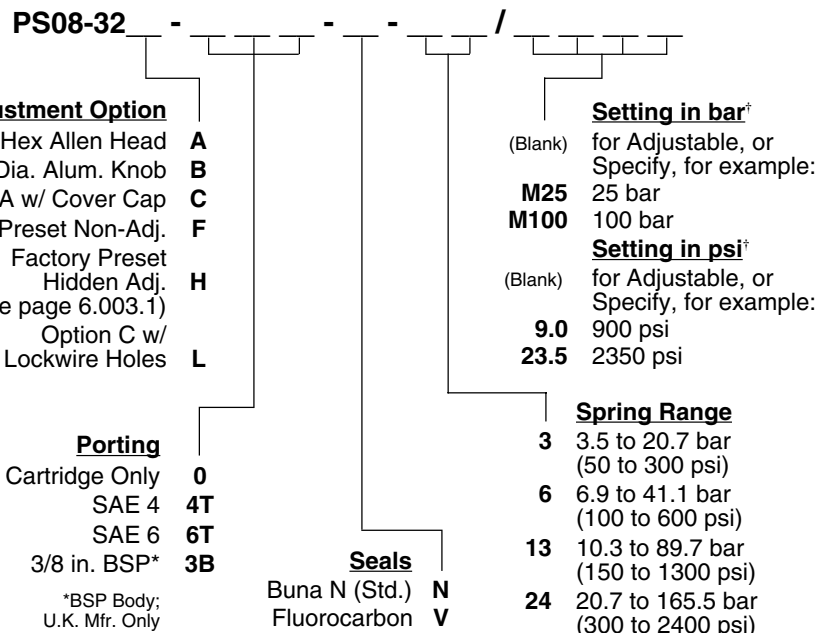


**MATERIALS**

**Cartridge:** Weight: 0.25 kg. (0.55 lbs.); Steel with hardened work surfaces. Zinc-plated exposed surfaces. Buna N O-rings and back-ups standard.

**Standard Ported Body:** Weight: 0.27 kg. (0.60 lbs.); Anodized high-strength 6061 T6 aluminum alloy, rated to 240 bar (3500 psi); see page 8.008.1. Ductile iron and steel bodies available; dimensions may differ; consult factory.

**TO ORDER**



\*Adjustable valves will be preset to approx. 50% of spring max. potential.