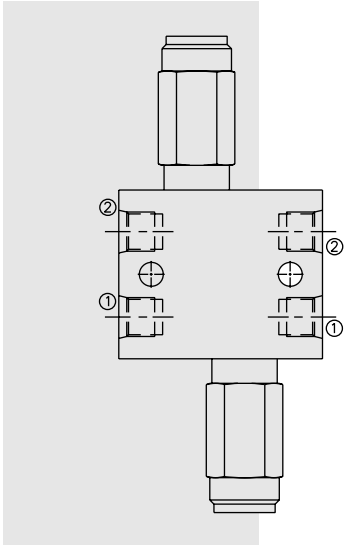


CRV08-20 Cross-Over Relief, Direct-Acting Poppet



DESCRIPTION

The **CRV08-20** cross-port relief uses two RV08-20 cartridges in an in-line plumbed housing. It is typically used to protect a hydraulic cylinder or motor from load-induced pressure surges. The cartridges used are screw-in, direct-acting, poppet-type valves, intended for use in lower flow circuits, requiring low internal leakage.

OPERATION

The CRV08-20 manifold allows flow to pass through the separated ① to ② passages at low pressure loss. If pressure in either passage exceeds the valve setting, flow will cross over to the opposite passage.

Note: Back-pressure at the outlet port of the relief cartridges will increase the nominal setting of the valve on a 1:1 basis (i.e. 6.9 bar [100 psi] back-pressure increases the nominal setting by 6.9 bar [100 psi]).

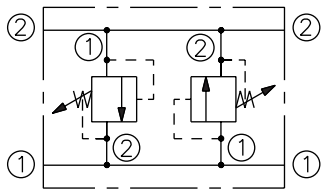
See catalog page 6.010.1 for cartridge specifications.

FEATURES

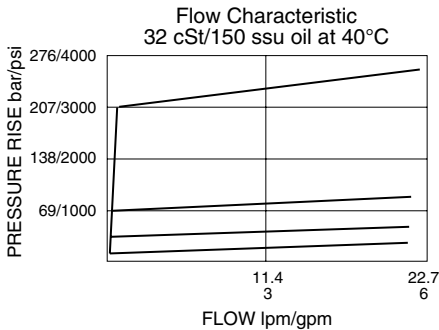
- Adjustments cannot be backed out of the valve.
- Adjustments prohibit springs from going solid.
- Optional spring ranges to 228 bar (3300 psi).
- Rapid response to pressure changes.
- Compact size.

SYMBOLS

USASI/ISO:



PERFORMANCE (Cartridge Only)



RATINGS

Operating Pressure: 228 bar (3300 psi)

Flow: The Performance Chart illustrates flow handling capacity at max. setting for each spring range option. Pressure rise will vary with spring (range) and with setting within range due to flow forces. Consult factory for specific flow characteristic values.

Internal Leakage: 0.25 cc/minute (5 drops/minute) max. to 75% of nominal setting

Crack Pressure Defined: bar (psi) evident at 0.95 lpm (0.25 gpm) attained

Reseat Pressure: Nominal 80% of crack pressure

Standard Spring Ranges:

- 3.4 to 34.5 bar (50 to 500 psi);
- 3.4 to 62.0 bar (50 to 900 psi);
- 6.9 to 124 bar (100 to 1800 psi);
- 6.9 to 227.5 bar (100 to 3300 psi)

Temperature: -40 to 120°C with standard Buna seals

Filtration: See page 9.010.1

Fluids: Mineral-based or synthetics with lubricating properties at viscosities of 7.4 to 420 cSt (50 to 2000 ssu)

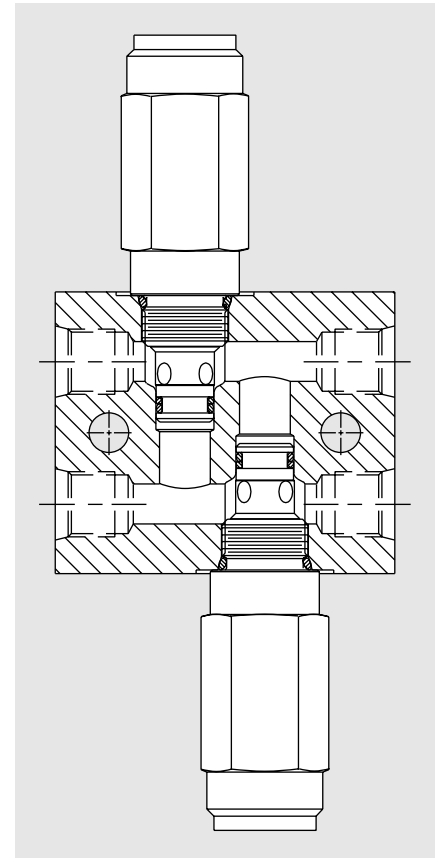
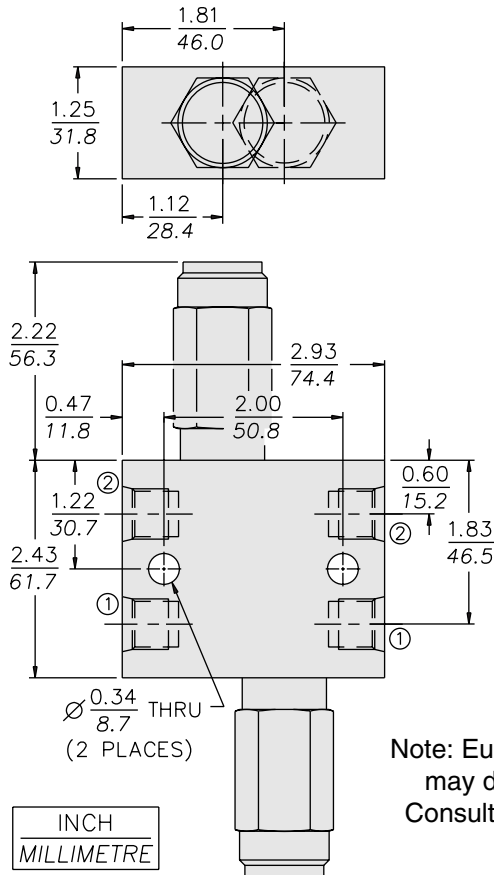
Installation: No restrictions; See page 9.020.1

Seal Kit: SK08-2X-M (for cross-over relief application) (2 required)

Body Part Number: 7070160

CRV08-20

DIMENSIONS



MATERIALS

Cartridges: (2 Required) Weight: 0.23 kg. (0.50 lbs.); Steel with hardened work surfaces. Zinc-plated exposed surfaces. Buna N O-rings and Fluorocarbon back-ups standard. Anodized aluminum knobs and caps.

Standard Ported Body: Weight: 0.36 kg. (0.80 lbs.); Anodized high-strength 6061 T6 aluminum alloy, rated to 240 bar (3500 psi).

TO ORDER

