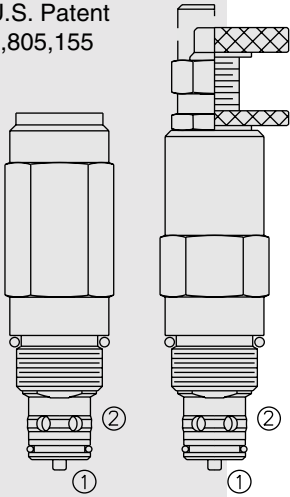


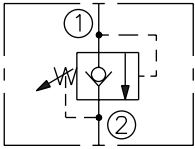
RV10-28 Relief, Pilot-Operated w/Reverse Check

U.S. Patent
6,805,155

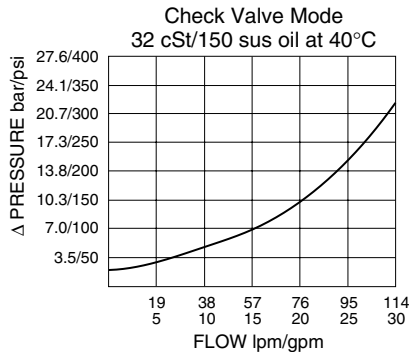
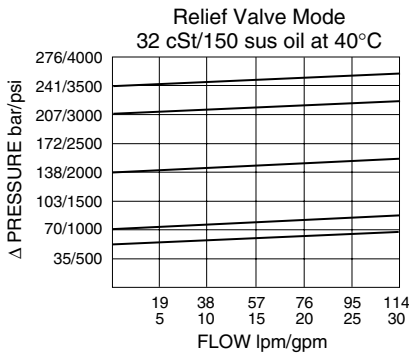


SYMBOLS

USAS/ISO:



PERFORMANCE (Cartridge Only)



DESCRIPTION

A screw-in, cartridge-style, pilot-operated, two-stage, hydraulic relief valve with reverse flow check valve. It is intended for use as a pressure limiting device in demanding hydraulic circuits which require fast response, low hysteresis, low leakage, low pressure overshoot and reverse free flow features.

OPERATION

The RV10-28 blocks flow from ① to ② until sufficient pressure is present at ① to force the pilot stage open, allowing the main stage to shift, opening ① to ②.

The relief flow path is from ① to ②. Reverse flow, from ② to ①, occurs when the pressure at ② is at least 2.1 bar (30 psi) higher than at port ①.

FEATURES

- Adjustments cannot be backed out of the valve.
- Hardened spool and cage for long life.
- Fast response.
- Industry common cavity.

RATINGS: Relief Valve Mode

Operating Pressure Range: 240 bar (3500 psi)

Flow: 7.6 to 113.6 lpm (2 to 30 gpm)

Internal Leakage: 0.5 ml/minute (10 drops/minute) max. to 80% of nominal setting

Crack Pressure Defined: bar (psi) evident at 7.6 lpm (2.0 gpm) attained

Reseat Pressure: Nominal 90% of crack pressure

Pressure Rise: at 240 bar (3500 psi): 0.15 bar/lpm (8 psi/gpm)

Response Time: Relief to Check switch under 250 bar/53 lpm (3500 psi/14 gpm)
condition: 0.6 seconds

RATINGS: Check Valve Mode

Crack Pressure: 2.1 bar (30 psi)

Response Time: Check to Relief switch under 250 bar/53 lpm (3500 psi/14 gpm)
condition: 0.3 seconds

RATINGS: Overall

Operating Temperature: with Buna N seals: -54 to 135°C (-65 to 275°F)

Filtration: See page 9.010.1

Fluids: Mineral-based or synthetics with lubricating properties at viscosities of 7.4 to 420 cSt (50 to 2000 sus)

Installation: No restrictions; See page 8.020.1

Cavity: VC10-2, Variation "A"; See page 8.110.1

Cavity Tool: CT10-2XX; See page 8.600.1

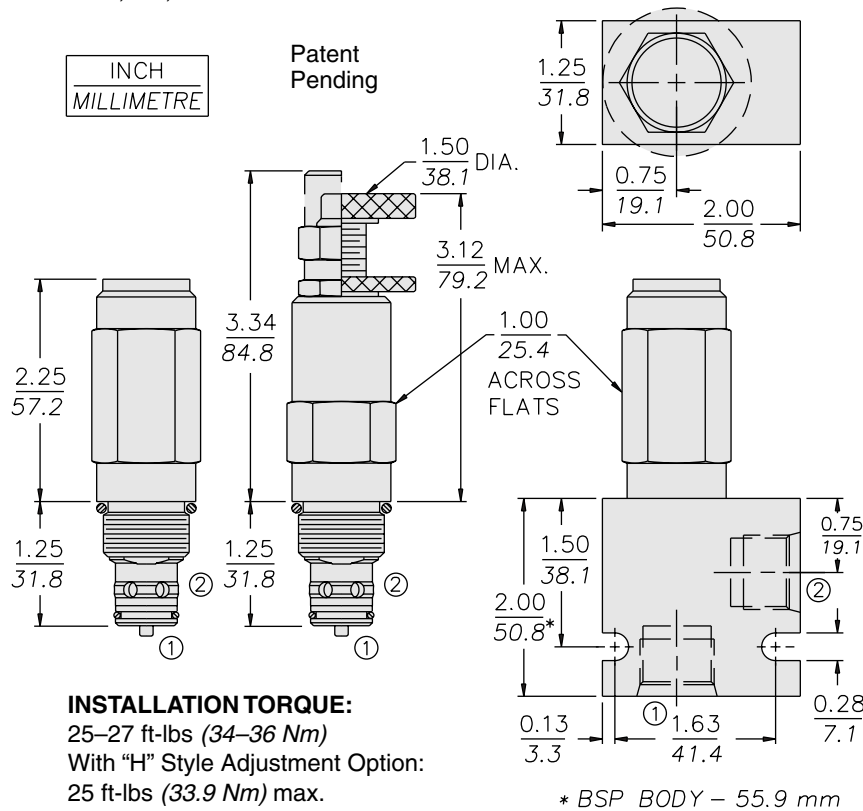
Seal Kit: SK10-2X-M; See page 8.650.1

Note: This new model RV10-28 should be used instead of the older model RV10-24 (page 6.062.1) which is being discontinued. For applications that do not require low-overshoot and reverse free-flow features, see model RV10-23 (page 6.060.1).

RV10-28

DIMENSIONS

U.S. Patent 6,805,155



INSTALLATION TORQUE:
25–27 ft-lbs (34–36 Nm)
With "H" Style Adjustment Option:
25 ft-lbs (33.9 Nm) max.

MATERIALS

Cartridge: Weight: 0.25 kg. (0.55 lbs.); Steel with hardened work surfaces. Zinc-plated exposed surfaces. Buna N O-rings and polyester elastomer back-ups standard. Anodized aluminum knobs. Optional polyurethane seals with Fluorocarbon back-up recommended for pressures over 240 bar (3500 psi).

Standard Ported Body: Weight: 0.16 kg. (0.35 lbs.); Anodized high-strength 6061 T6 aluminum alloy, rated to 240 bar (3500 psi); see page 8.010.1. Ductile iron and steel bodies available; dimensions may differ; consult factory.

TO ORDER

RV10-28

Adjustment Option
1/4 in. Hex Allen Head **A**
1-1/2 in. Dia. Alum. Knob **B**
Option A w/ Cover Cap **C**
Factory Preset Non-Adj. **F**
Factory Preset Hidden Adj. **H**
Option C w/ Lockwire Holes **L**

Porting
Cartridge Only **0**
SAE 6 **6T**
SAE 8 **8T**
3/8 in. BSP* **3B**
1/2 in. BSP* **4B**

*BSP Body;
U.K. Mfr. Only

Seals
Pressure on P Only:
N Buna N (Std.)
V Fluorocarbon

Setting in bar[†]
(Blank) for Adjustable, or Specify, for example:
M52 52 bar (Minimum)
M100 100 bar
Setting in psi[†]
(Blank) for Adjustable, or Specify, for example:
7.5 750 psi (Minimum)
23.5 2350 psi

Spring Range
35 51.7 to 241.4 bar
(750 to 3500 psi)

[†]Adjustable valves will be preset to approx. 50% of spring max. potential, or 52 bar (750 psi), whichever is less.