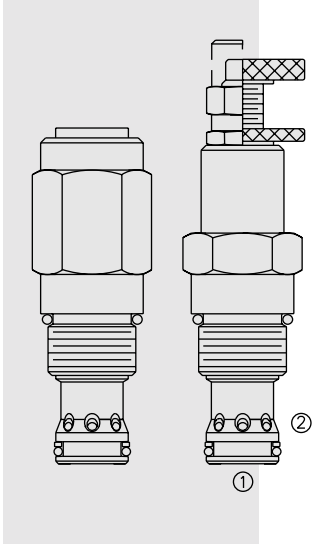


# PRESSURE CONTROLS

## RV52-26 Relief, Pilot-Operated Spool



### DESCRIPTION

A screw-in, cartridge-style, pilot-operated (two-stage), spool-type hydraulic relief valve, intended for use as a pressure limiting device in demanding hydraulic circuits which require fast response and low hysteresis.

### OPERATION

The RV52-26 blocks flow from ① to ② until sufficient pressure is present at ① to force the piloting relief off its seat, allowing the main (second stage) spool to shift, opening ① to ②.

The cartridge offers smooth transition in response to load changes in demanding hydraulic circuits.

Note: The RV52-26 may not be used in cross-over relief applications.

### FEATURES

- Adjustments cannot be backed out of the valve.
- Adjustments prohibit springs from going solid.
- Hardened spool and cage for long life.
- Fast, smooth response to pressure surges.
- Cost effective cavity.

### RATINGS

**Operating Pressure:** 345 bar (5000 psi)

**Flow:** See Performance Chart

**Internal Leakage:** 115 cc/minute (7 cu. in/minute) max. to 85% of nominal setting

**Crack Pressure Defined:** bar (psi) evident at 7.6 lpm (2.0 gpm) attained

**Reseat Pressure:** Nominal 90% of crack pressure

**Standard Spring Range:** 20.7 to 345 bar (300 to 5000 psi)

**Temperature:** -40 to 120°C

**Filtration:** See page 9.010.1

**Fluids:** Mineral-based or synthetics with lubricating properties at viscosities of 7.4 to 420 cSt (50 to 2000 ssu)

**Installation:** No restrictions; See page 9.020.1

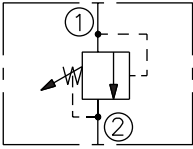
**Cavity:** VC12-2; See page 9.112.1

**Cavity Tool:** CT12-2XX; See page 8.600.1

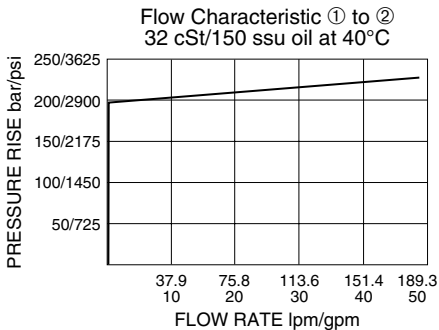
**Seal Kit:** SK12-2P-B; See page 8.650.1

### SYMBOLS

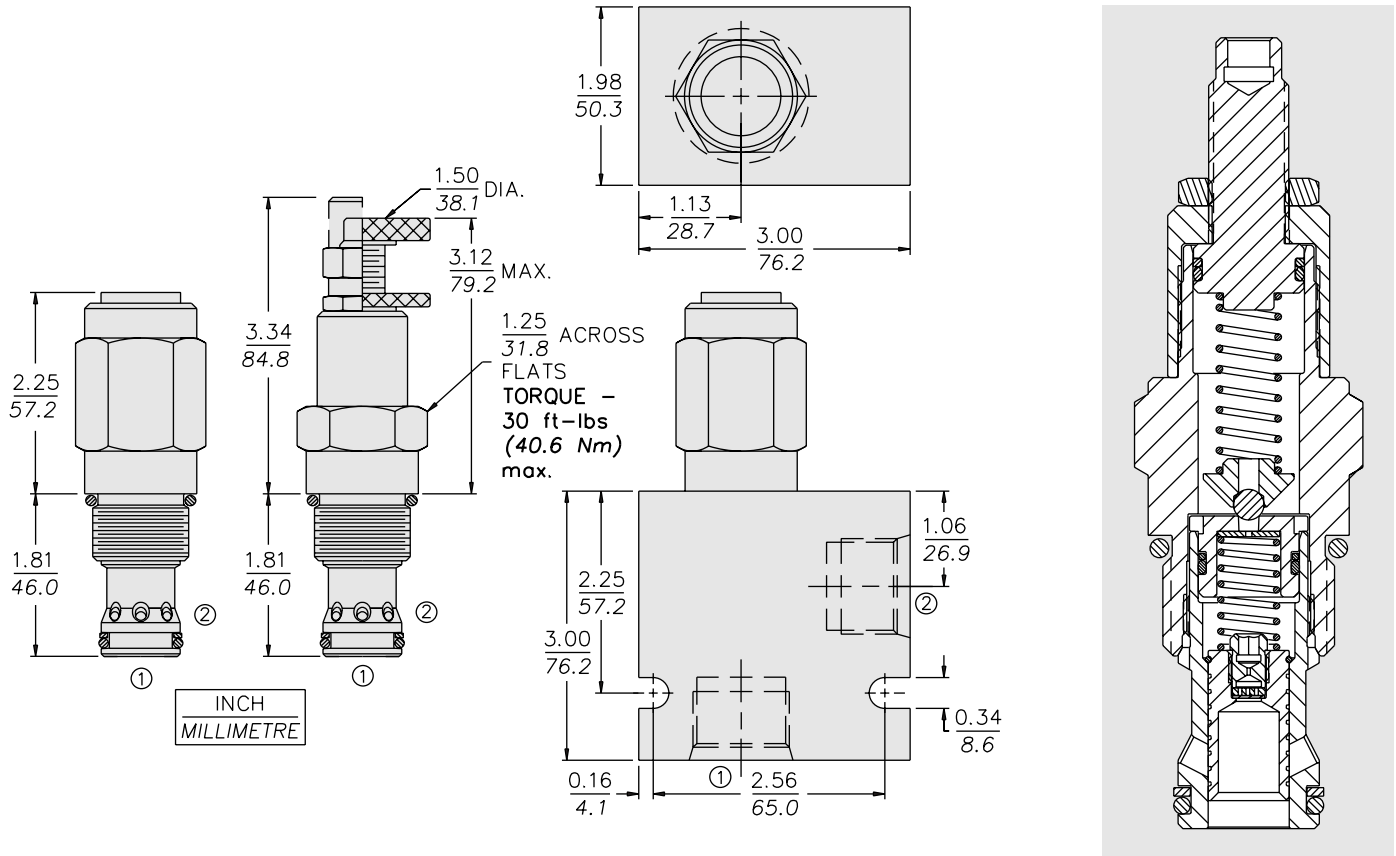
#### USASI/ISO:



### PERFORMANCE (Cartridge Only)



## DIMENSIONS



## MATERIALS

**Cartridge:** Weight: 0.34 kg. (0.75 lbs.); Steel with hardened work surfaces. Zinc-plated exposed surfaces. Polyurethane O-rings and back-up standard. Anodized aluminum knobs.

**Ported Body:** Weight: 1.81 kg. (4.0 lbs.); Steel, zinc-plated (code "S"); or **Ductile Iron (code "D")** standard, consult factory for weight, dimensions may differ; rated to 345 bar (5000 psi); See page 8.012.1.

## TO ORDER

RV52-26 - P - /

### Adjustment Option

- 1/4 in. Hex Allen Head **A**
- 1-1/2 in. Dia. Alum. Knob **B**
- Option A w/ Cover Cap **C**
- Factory Preset Non-Adj. **F**
- Factory Preset Hidden Adj. **H**
- Option C w/ Lockwire Holes **L**

### Porting

- Cartridge Only **0**
- SAE 16 (Ductile) **16TD**
- SAE 16 (Steel) **16TS**

**Seals**  
Pressure on  
P Only:

**P** Polyurethane

### Setting in bar\*

(Blank) for Adjustable, or Specify, for example:

- M25** 25 bar
- M100** 100 bar

### Setting in psi\*

(Blank) for Adjustable, or Specify, for example:

- 9.0** 900 psi
- 23.5** 2350 psi

### Spring Range

**50** 20.7 to 345 bar (300 to 5000 psi)

\*Adjustable valves will be preset to approx. 50% of spring max. potential.