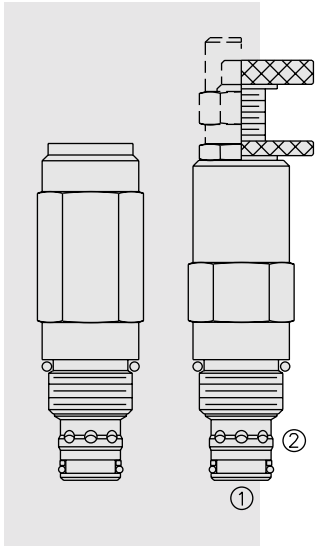


# PRESSURE CONTROLS

## RV50-26 Relief, Pilot-Operated Spool



### DESCRIPTION

A screw-in, cartridge-style, pilot-operated (two-stage), spool-type hydraulic relief valve, intended for use as a pressure limiting device in demanding hydraulic circuits which require fast response and low hysteresis.

### OPERATION

The RV50-26 blocks flow from ① to ② until sufficient pressure is present at ① to force the piloting relief off its seat, allowing the main (second stage) spool to shift, opening ① to ②.

The cartridge offers smooth transition in response to load changes in demanding hydraulic circuits.

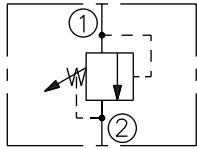
Note: The RV50-26 may not be used in cross-over relief applications (back pressure on ②).

### FEATURES

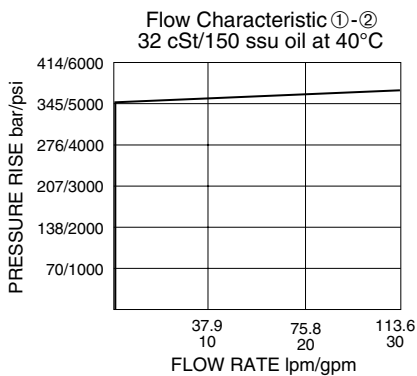
- Adjustments cannot be backed out of the valve.
- Adjustments prohibit springs from going solid.
- Hardened spool and cage for long life.
- Fast, smooth response to pressure surges.
- Industry common cavity.

### SYMBOLS

#### USAS/ISO:



### PERFORMANCE (Cartridge Only)



### RATINGS

**Operating Pressure:** 345 bar (5000 psi)

**Flow:** The Performance Chart illustrates flow handling capacity at maximum setting. Pressure rise will vary with setting due to flow forces. Consult factory for specific flow characteristic values.

**Internal Leakage:** 115 cc/minute (7 cu. in./minute) max. to 85% of nominal setting

**Crack Pressure Defined:** bar (psi) evident at 7.6 lpm (2.0 gpm) attained

**Reseat Pressure:** Nominal 90% of crack pressure

**Standard Spring Ranges:** 20.7 to 344.8 bar (300 to 5000 psi)

**Temperature:** -40 to 120°C

**Filtration:** See page 9.010.1

**Fluids:** Mineral-based or synthetics with lubricating properties at viscosities of 7.4 to 420 cSt (50 to 2000 ssu)

**Installation:** No restrictions; See page 9.020.1

**Cavity:** VC10-2; See page 9.110.1

**Cavity Tool:** CT10-2XX; See page 8.600.1

**Seal Kit:** SK10-2P-B; See page 8.650.1

