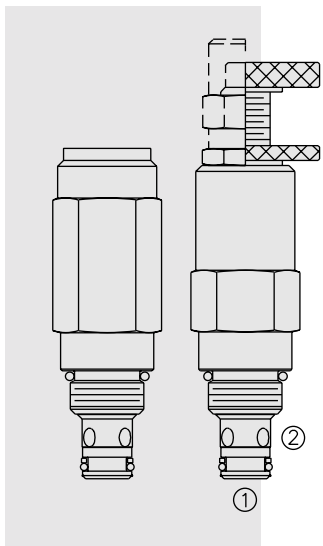


RV58-20 Relief, Direct-Acting Poppet, High Pressure



DESCRIPTION

A screw-in, cartridge-style, direct-acting, poppet-type, hydraulic relief valve intended for lower flow circuits requiring low internal leakage at higher pressures.

OPERATION

The **RV58-20** blocks flow from ① to ② until sufficient pressure is present at ① to force the spring-opposed poppet from its seat.

Note: The RV58-20 may not be used in cross-over relief applications (back pressure on ②).

FEATURES

- Adjustments cannot be backed out of the valve.
- Adjustments prohibit springs from going solid.
- Rapid response to pressure changes.
- Compact size.

RATINGS

Operating Pressure: 345 bar (5000 psi)

Flow: See Performance Chart

Internal Leakage: 0.25 cc/minute (5 drops/minute) max. to 75% of nominal setting

Crack Pressure Defined: bar (psi) evident at 0.95 lpm (0.25 gpm) attained

Reseat Pressure: Nominal 80% of crack pressure

Standard Spring Range: 27.6 to 317.2 bar (400 to 4600 psi)

Temperature: -40 to 120°C with standard Polyurethane seals

Filtration: See page 9.010.1

Fluids: Mineral-based or synthetics with lubricating properties at viscosities of 7.4 to 420 cSt (50 to 2000 ssu)

Installation: No restrictions; See page 9.020.1

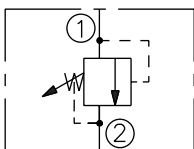
Cavity: VC08-2; See page 9.108.1

Cavity Tool: CT08-2XX; See page 8.600.1

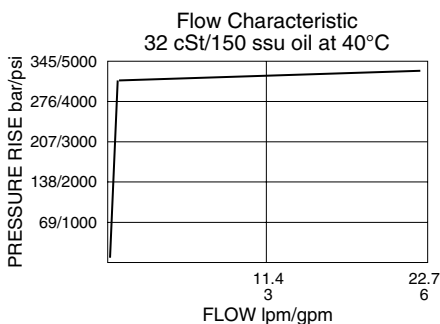
Seal Kit: SK08-2P-B; See page 8.650.1

SYMBOLS

USASI/ISO:

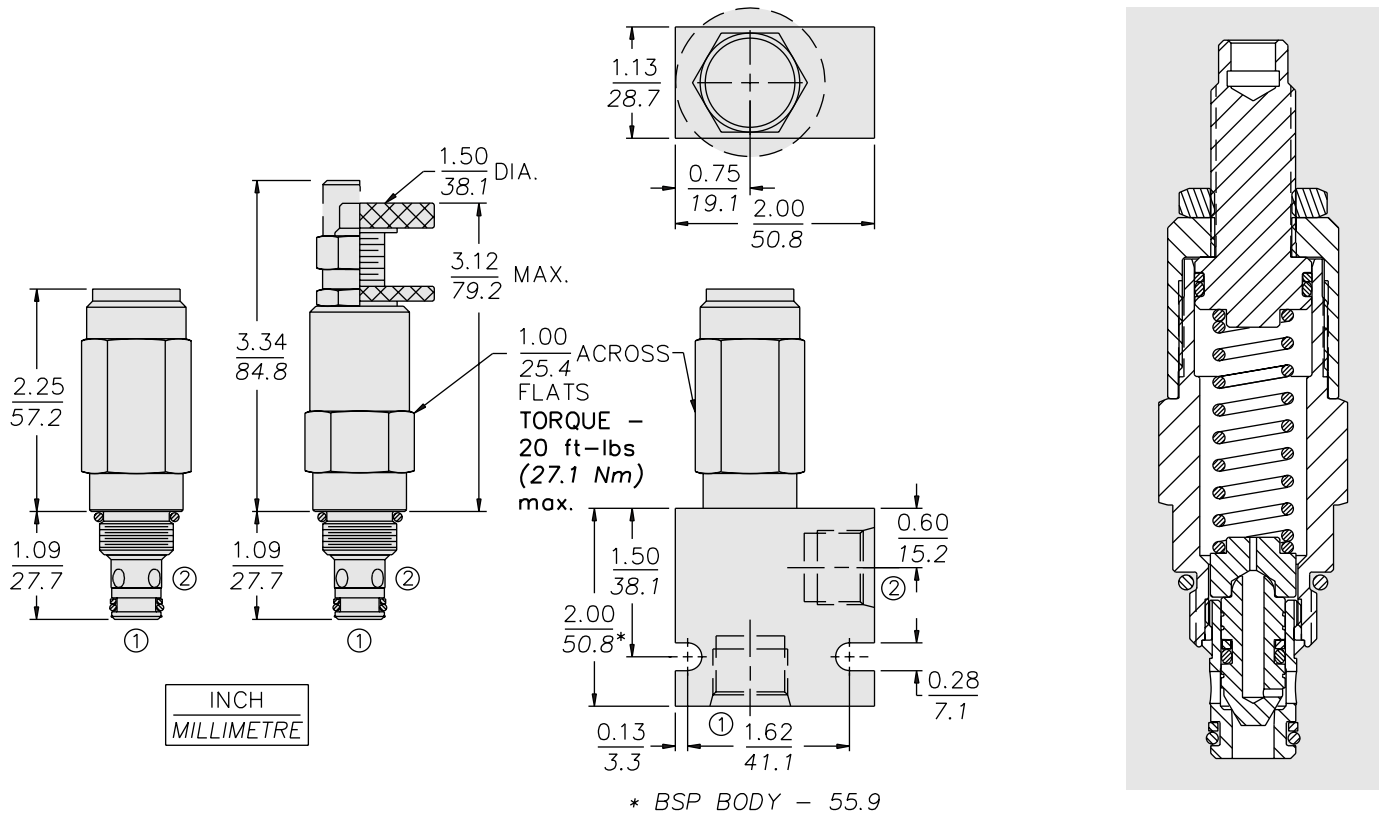


PERFORMANCE (Cartridge Only)



RV58-20

DIMENSIONS



MATERIALS

Cartridge: Weight: 0.23 kg. (0.50 lbs.); Steel with hardened work surfaces. Zinc-plated exposed surfaces. Polyurethane O-rings and back-up standard. Anodized aluminum knobs and caps.

Ported Body: Weight: 0.54 kg. (1.20 lbs.); Steel, zinc-plated (code "S"); or **Ductile Iron (code "D")** standard, consult factory for weight, dimensions may differ; rated to 345 bar (5000 psi); see page 8.008.1.

TO ORDER

RV58-20 - - - 4 6 /

Adjustment Option

- 1/4 in. Hex Allen Head **A**
- 1-1/2 in. Dia. Alum. Knob **B**
- Option A w/ Cover Cap **C**
- Factory Preset Non-Adj. **F**
- Factory Preset Hidden Adj. **H**
- Option C w/ Lockwire Holes **L**

Setting in bar[†]

(Blank) for Adjustable, or Specify, for example:
M275 275 bar

Setting in psi[†]

(Blank) for Adjustable, or Specify, for example:
40.1 4010 psi

Porting

- Cartridge Only **0**
- SAE 6 **6TD**
- SAE 6 **6TS**
- SAE 8 **8TD**
- SAE 8 **8TS**
- 1/4 in. BSP* **2BD**
- 1/4 in. BSP* **2BS**
- 3/8 in. BSP* **3BD**
- 3/8 in. BSP* **3BS**

*BSP Body; U.K. Mfr. Only

Seals

- Pressure on P Only:**
- P** Polyurethane (Std.)

Spring Range

- 46** 27.6 to 317.2 bar (400 to 4600 psi)

[†]Adjustable valves will be preset to approx. 50% of spring max. potential.