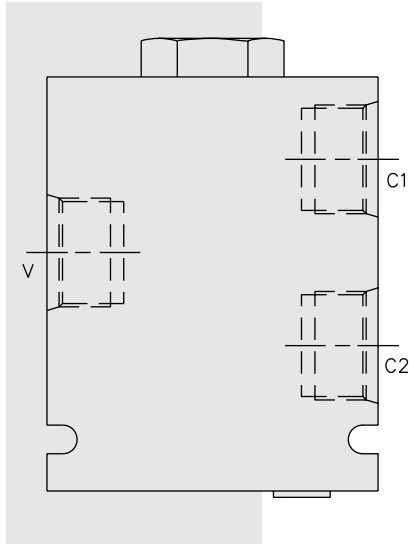


FLOW CONTROLS

FDC16 Flow Divider/Combiner



DESCRIPTION

A specialized flow divider/combiner valve manifold, commonly applied in hydraulic motor drive applications with uneven pressure loads caused by steering or ground conditions.

OPERATION

In the dividing mode, the **FDC16** will divert input flow from ③ to ② and ④, based on the ratio specified, while pressure at ② and ④ remains relatively equal. If a pressure differential develops, fluid will be transferred to the lower pressure port from the higher pressure port via an internal body orifice (④ to ② or ② to ④).

In the combining mode, the internal orifice will serve to equalize load pressures, preventing combiner spool lock-up.

FEATURES

- Hardened parts for long life.
- Quiet, modulated response.

RATINGS

Operating Pressure: 240 bar (3500 psi)

Flow: See Performance Chart

Flow Options:

- Input Flow: 98.4 lpm (26 gpm); Ratio: 50:50; Model Code: 44
- Input Flow: 151.4 lpm (40 gpm); Ratio: 50:50; Model Code: 66
- Other ratio options available; consult factory.

Balancing Orifice: 1.52 mm (0.06 in.) standard

Standard Compensator Bias Spring: 2.07 bar (30 psid)

Flow Accuracy: 10% from 33-100% of rated flow with approx. equal ② and ④ port loads

Temperature: -40 to 120°C

Filtration: See page 9.010.1

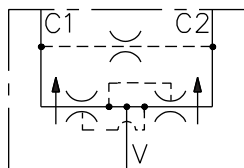
Fluids: Mineral-based or synthetics with lubricating properties at viscosities of 7.4 to 420 cSt (50 to 2000 ssu)

Installation: No restrictions; See page 9.020.1

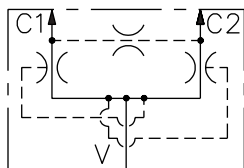
Seal Kit (FD16-40): SK16-4X-MMT; See page 8.650.1

SYMBOLS

USASI:



ISO:



PERFORMANCE (Cartridge Only)

