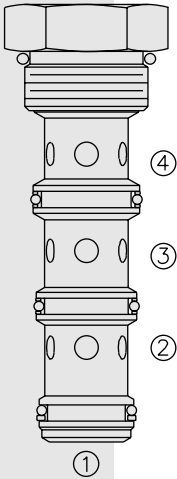


FLOW CONTROLS

FD56-45 Flow Divider/Combiner . . . Heavy Duty,



DESCRIPTION

A heavy duty, multifunction, screw-in, cartridge-style, spool-type flow divider/combiner.

OPERATION

In the dividing mode, the **FD56-45** will divert input flow from ③ to ② and ④, based on the ratio specified, regardless of operating pressure. When the flow direction is reversed the valve will combine flows from ② and ④ to port ③. Synchronizing flow is provided in both the dividing and combining modes at bottomed conditions in cylinder applications and at stalled conditions in motor applications.

FEATURES

- Hardened parts for long life.
- Quiet, modulated response.
- Wide operating flow range.
- Synchronizing in dividing and combining modes.
- Floating cage — High installation torque.
- Industry common cavity.

RATINGS

Operating Pressure: 345 bar (5000 psi)

Flow Options:

- Input Flow: 98.4 lpm (26 gpm); Ratio: 50:50; Model Code: 44
- Input Flow: 128.7 lpm (34 gpm); Ratio: 50:50; Model Code: 66
- Input Flow: 167 lpm (44 gpm); Ratio: 50:50; Model Code: 88
- Input Flow: 197 lpm (52 gpm); Ratio: 50:50; Model Code: 99

Flow Accuracy: 10% from 25-100% of maximum rated flow

Temperature: -40 to 120°C

Filtration: See page 9.010.1

Fluids: Mineral-based or synthetics with lubricating properties at viscosities of 7.4 to 420 cSt (50 to 2000 ssu)

Installation: No restrictions; See page 9.020.1. Note that standard 16 size 4-way bodies should not be used with this product. See page 8.016.1 for special flow divider bodies.

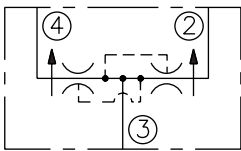
Cavity: VC16-4; See page 9.116.1

Cavity Tool: CT16-4X; See page 8.600.1

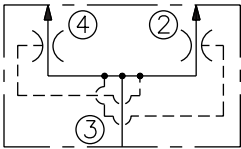
Seal Kit: SK16-4X-MMM; See page 8.650.1

SYMBOLS

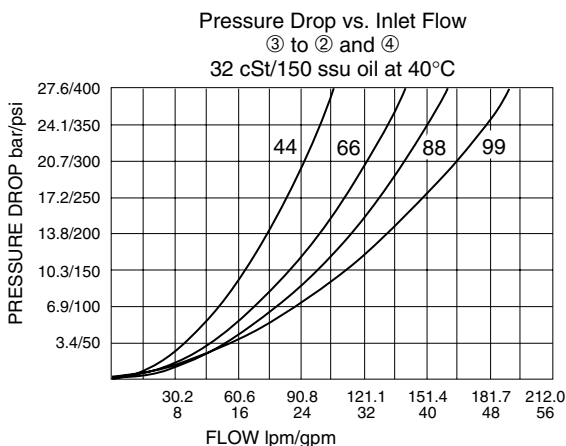
USASI:



ISO:



PERFORMANCE (Cartridge Only)

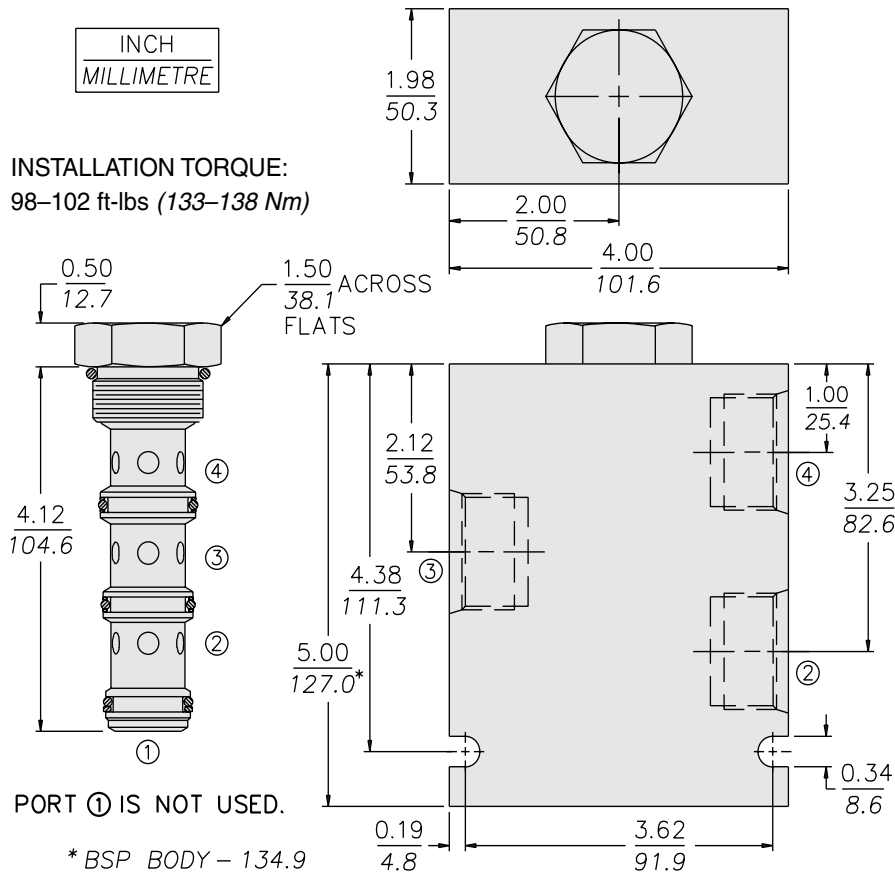


Note: This new FD56-45 flow divider incorporates the features of the older FDxx-40, FDxx-41 and FDxx-42 flow dividers in one product. It is designed to supersede the older models. OEM's are encouraged to consider this newer, more robust and versatile model for new applications.

Multifunction

FD56-45

DIMENSIONS



MATERIALS

Cartridge: Weight: 0.36 kg. (0.80 lbs.);
Steel with hardened work surfaces.
Zinc-plated exposed surfaces.
Buna N O-rings and polyester
elastomer back-ups standard.

Special Ported Body: Weight: 1.5 kg.
(3.3 lbs.); Anodized high-strength
6061 T6 aluminum alloy, rated to
240 bar (3500 psi); See page
8.016.1.

Note: Ductile iron or steel body
required for operation over 240 bar
(3500 psi); body dimensions may
differ; consult factory.

TO ORDER

FD56-45 - - -

Special Ported Bodies

- Cartridge Only **0**
- SAE 12 (All Ports) **12T**
- SAE 12 ② & ④;
SAE 16 ③ **16D**
- SAE 16 (All Ports) **16T**
- 3/4 in. BSP* (All Ports) **6B**
- 3/4 in. BSP* ② & ④;
1 in. BSP* ③ **7B**
- 1 in. BSP* (All Ports) **8B**

*BSP Body;
U.K. Mfr. Only

NOTE: Standard 16-size 4-way bodies
should not be used for flow dividers. See
special flow divider bodies, page 8.016.1.

Dividing/Combining Ratio

- 44** 50:50 rated @ 98.4 lpm
(26 gpm) input
- 66** 50:50 rated @ 128.7 lpm
(34 gpm) input
- 88** 50:50 rated @ 167 lpm
(44 gpm) input
- 99** 50:50 rated @ 197 lpm
(52 gpm) input

NOTE: Additional ratios and/or input
flow sizings available for OEM
applications. Consult factory.

Seals

- N** Buna N (Std.)
- V** Fluorocarbon
- P** Polyurethane*

* Required for operation over
240 bar (3500 psi); FD50 option.