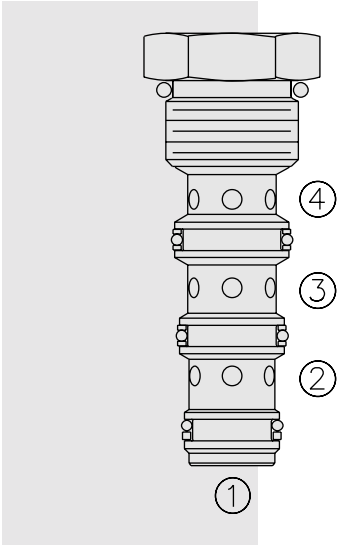


FLOW CONTROLS

FD10-44 Flow Divider/Combiner, Multifunction,



DESCRIPTION

High performance, multifunction, screw-in, cartridge-style, spool-type flow divider/combiner.

OPERATION

In the dividing mode, the **FD10-44** will divert input flow from port ③ to ports ② and ④, based on the ratio specified. This valve provides a highly accurate, pressure compensated division of inlet flow or combination of return flow regardless of system operating pressure. When the flow direction is reversed, the valve will combine flows from ports ② and ④ to port ③.

FEATURES

- Hardened parts for long life.
- Quiet, modulated response.
- Wide operating flow range.
- Accurate division or combination of flow.
- Industry common cavity.

RATINGS

Operating Pressure: FD10-44: 240 bar (3500 psi)

Flow Options:

Max. Input Flow: 7.5 lpm (2 gpm); Ratio: 50:50; Model Code: 11

Flow Accuracy: 10% from 25–100% of maximum rated flow

Temperature: -40 to 120°C

Filtration: See page 9.010.1

Fluids: Mineral-based or synthetics with lubricating properties at viscosities of 7.4 to 420 cSt (50 to 2000 ssu)

Installation: No restrictions; See page 9.020.1. Note: Standard 10 size 4-way bodies should not be used with this product. See page 8.010.1 for special flow divider bodies.

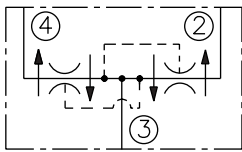
Cavity: VC10-4 (Variation "A"); See page 9.110.1

Cavity Tool: CT10-4X; See page 8.600.1

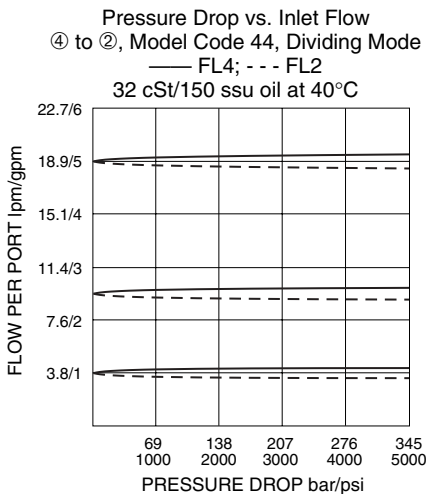
Seal Kit: SK10-4X-MMT; See page 8.650.1

SYMBOLS

USAS/ISO:



PERFORMANCE (Cartridge Only)



Note: The FD10-44 flow divider is for very low flow applications of 7.5 lpm (2 gpm) or lower, and pressures up to 240 bar (3500 psi). For other applications, see model FD50-45.

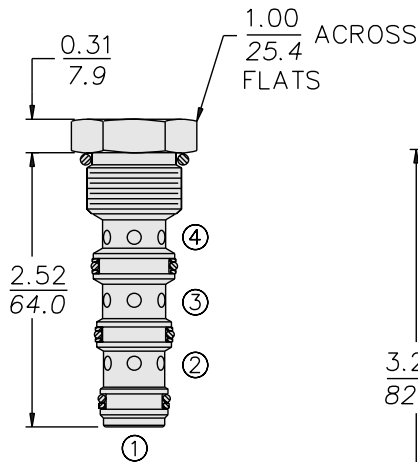
Low Flow

FD10-44

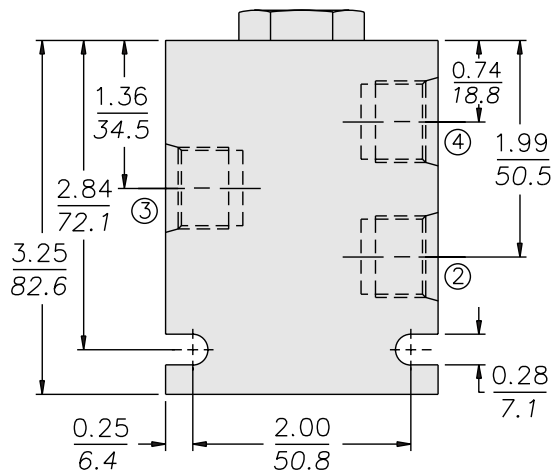
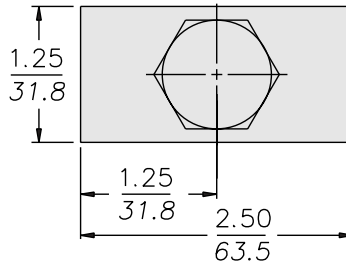
DIMENSIONS

INCH
MILLIMETRE

INSTALLATION TORQUE:
FD10: 22–25 ft-lbs (30–34 Nm)



PORT ① IS NOT USED.



MATERIALS

Cartridge: Weight: 0.11 kg. (0.25 lbs.);
Steel with hardened work surfaces.
Zinc-plated exposed surfaces.
Buna N O-rings and polyester elastomer back-ups standard.

Special Ported Body: Weight: 0.34 kg. (0.75 lbs.); Anodized high-strength 6061 T6 aluminum alloy, rated to 240 bar (3500 psi); see page 8.010.1.

Note: Ductile iron or steel body required for operation over 240 bar (3500 psi); body dimensions may differ; consult factory.

TO ORDER

FD10-44 -

Special Ported Bodies

- Cartridge Only **0**
- SAE 6 (All Ports) **6T**
- SAE 8 ③; **8D**
- SAE 6 ② & ④ **8D**
- 1/4 in. BSP* (All Ports) **2B**
- 3/8 in. BSP* (All Ports) **3B**
- 1/2 in. BSP* ③; **5B**
- 3/8 in. BSP* ② & ④ **5B**

*BSP Body; U.K. Mfr. Only

Dividing/Combining Ratio

- 11** 50:50 rated @ 7.5 lpm (2 gpm) input

Seals

- N** Buna N (Std.)

NOTE: Standard 10-size 4-way bodies should not be used for flow dividers. See special flow divider bodies, page 8.010.1.