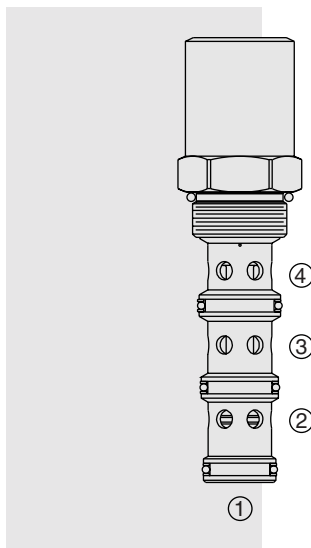


EC16-43 Pressure Compensator



DESCRIPTION

A screw-in, cartridge-style, **priority on-demand**, pressure-compensator with dynamic load sense. It is intended to provide priority flow in the required amount while allowing excess flow to be used for auxiliary functions.

OPERATION

With inlet flow at ③, the **EC16-43** will deliver required priority flow at ④, regardless of load pressure. Excess flow exits at ②. Port ① is the load sense port. All ports may be fully pressurized.

FEATURES

- Hardened parts for long life.
- Quiet, modulated response.
- Industry common cavity.

RATINGS

Maximum Operating Pressure: Inlet: 240 bar (3500 psi)

Maximum Input Flow: 190 lpm (50 gpm)

Maximum Priority Flow Rate: 95 lpm (25 gpm)

Flow Maintenance: see performance chart

Temperature: -40 to 120°C with Buna N seals

Filtration: See page 9.010.1

Fluids: Mineral-based or synthetics with lubricating properties at viscosities of 7.4 to 420 cSt (50 to 2000 ssu)

Installation: No restrictions; See page 9.020.1

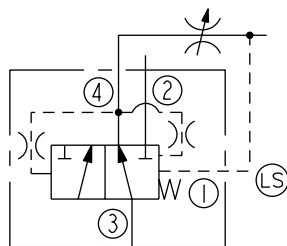
Cavity: VC16-4; See page 9.116.1

Cavity Tool: CT16-4-XXX; See page 8.600.1

Seal Kit: SK16-4X-MMM; See page 8.650.1

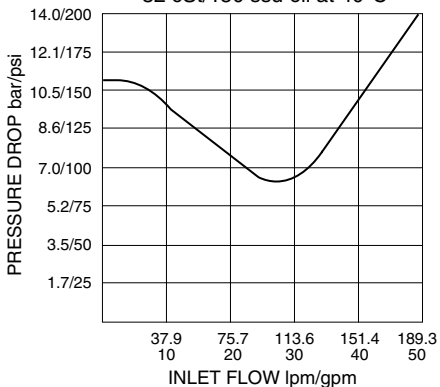
SYMBOLS

USASI/ISO:



PERFORMANCE (Cartridge Only)

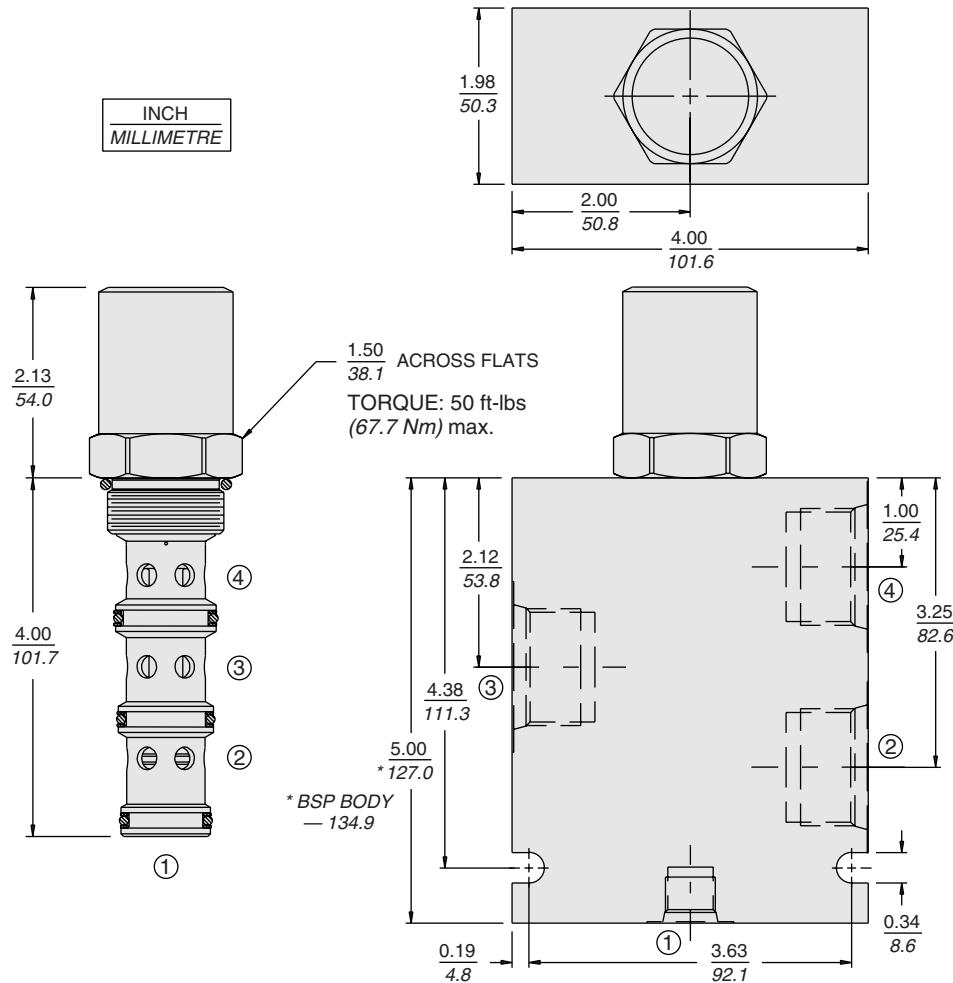
Pressure Drop vs. Inlet Flow
③ to ②, with ④ closed
32 cSt/150 ssu oil at 40°C



with Dynamic Load Sense

EC16-43

DIMENSIONS



MATERIALS

Cartridge: Weight: 0.56 kg. (1.23 lbs.);
Steel with hardened work surfaces.
Zinc-plated exposed surfaces.
Buna N O-rings and polyester
elastomer back-ups standard.

Standard Ported Body: Weight:
1.50 kg. (3.30 lbs.); Anodized high-
strength 6061 T6 aluminum alloy,
rated to 240 bar (3500 psi); see page
8.016.1. Ductile iron and steel bodies
available; dimensions may differ;
consult factory.

TO ORDER

EC16-43 -		-	-	-
	Porting			Compensator Spring
	Cartridge Only	0	80	5.51 bar (80 psid)
	SAE 12; Port 1: SAE 6	12T	150	10.34 bar (150 psid)
	SAE 16; Port 1: SAE 6	16T		
				Seals
				N Buna N (Std.)
				V Fluorocarbon